

---

2008

## Fact Book, 2008-09

John Carroll University

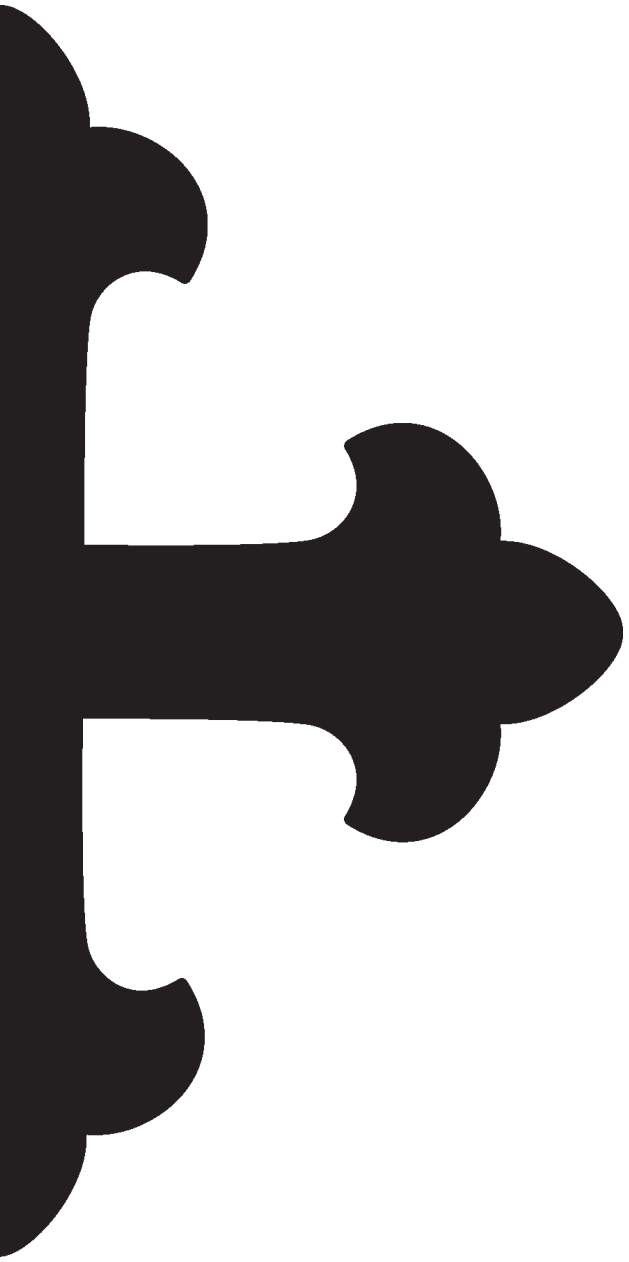
Follow this and additional works at: <https://collected.jcu.edu/factbook>

---

### Recommended Citation

John Carroll University, "Fact Book, 2008-09" (2008). *Fact Book*. 8.  
<https://collected.jcu.edu/factbook/8>

This Book is brought to you for free and open access by the University at Carroll Collected. It has been accepted for inclusion in Fact Book by an authorized administrator of Carroll Collected. For more information, please contact [mchercourt@jcu.edu](mailto:mchercourt@jcu.edu).



# **2008-09 FACT BOOK**

## PREFACE

This twenty-seventh edition of the John Carroll University FACT BOOK is an attempt to present in the most readable form current and historical data from various sources throughout the University. We wish to express our thanks and appreciation for the gracious cooperation and assistance received from these many sources. Once again, we welcome your comments and suggestions for additional information that might be included in future editions or for improvements in the way the information is presented.

A copy of this FACT BOOK can be found on the “Information Resources” section of the JCU Institutional Research web pages: [www.jcu.edu/ir](http://www.jcu.edu/ir).

Doris M. Pudloski  
Director,  
Institutional Research

Deanna L. DePenti  
Assistant to the Director,  
Institutional Research

October, 2008

## TABLE OF CONTENTS

	PAGE
 GENERAL INFORMATION	
Jesuit Colleges and Universities .....	7
History .....	8
Vision, Mission, Core Values .....	11
Accreditation and Memberships .....	12
College of Arts and Sciences .....	13
John M. and Mary Jo Boler School of Business .....	15
Information Services .....	16
University Buildings .....	18
Campus Map .....	20
 ADMINISTRATION	
University Administration .....	23
Organizational Chart .....	24
Board of Directors .....	25
Presidents, 1886-2008 .....	29
Academic Deans, 1886-2008 .....	30
Degrees Conferred, 1954-2008 .....	31
Minority Degrees Awarded, 1996-2008 .....	33
Honorary Degrees, 1966-2008 .....	34
Commencement Speakers, 1954-2008 .....	37
 STUDENTS	
Enrollment Data, Fall Semester 2008 .....	41
Enrollment Stats by Gender and Race, Fall 2008 .....	42
Minority Enrollment Statistics, 1999-2008 .....	43
Enrollment Statistics, 1999-2008 .....	44
Campus Residence, 1999-2008 .....	45
25 Year Enrollment (Head Count) History .....	46
Enrollment by Class Level, Fall and Spring, 1999-2008.....	48
Credit Hours by Department, Fall and Spring, 1999-2008.....	50
Seats Occupied by Department, Fall and Spring, 1999-2008.....	52
Summer Session Enrollment, 1999-2008 .....	54
Religious Affiliation Statistics, 2004-2008 .....	55
Center for Career Services .....	56
Graduates by Major/Program, 1999-2008 .....	58
Freshman Retention and Graduation Rates .....	61
Full-time Undergraduate Expenses .....	62
Room and Board, 1982-2009 .....	62
Tuition and Fees, 1982-2009 .....	63
Application and Admission Statistics .....	64
Admission Stats, 5 and 10 Year Averages vs 2008 .....	65
Profile of 2008 Freshman Class .....	66
Freshmen - Geographical Origin .....	67

Freshmen - Major Areas of Academic Interest.....	68
Freshmen - SAT and ACT Scores .....	69
Freshmen - Average High School GPA, Class Rank .....	70
Freshmen - Distribution by High School Type .....	71
Student Union Presidents, 1920-2008 .....	72
Beaudry Award, 1951-2008 .....	73
Millor Orator, 1977-2008 .....	74

## FACULTY

Faculty by Department .....	77
Full-time Equivalent Faculty, 1978-2008.....	78
Faculty, Lay and Religious, 1978-2008 .....	79
Faculty, Male and Female, 1978-2008 .....	80
Faculty, Tenure Status 1988-2008.....	82
Faculty, Distribution by Rank and Department .....	84
Faculty, Rank 1988-2008.....	85
Terminal Degrees by Granting Universities .....	86
Faculty, Terminal Degrees 1988-2008.....	87
Faculty, Minority Stats, 1988-2008.....	88
Distinguished Faculty Award, 1969-2008 .....	89
Lucrezia Culicchia Award for Teaching, 1990-2008 .....	90
Wasmer Outstanding Teaching Award, 1992-2007 .....	91
Curtis W. Miles Award for Community Service, 1992-2007 .....	91
Grael Faculty Fellowship, 1996-2009 .....	92

## ALUMNI

Numbers of Alumni by State .....	97
National Alumni Presidents, 1950-2008 .....	98
Alumni Medal Awards, 1984-2008 .....	99
Alumni Giving, 1978-2008 .....	100

## FINANCE

Summary of Operating Revenue and Expenditures .....	103
Audited Gift Income, 1997-2008.....	104
Endowment Growth, 1983-2008 .....	105
Expenditures Summary, 1998-99 and 2007-08 .....	106

## LIBRARY

Holdings, 1987-2008 .....	109
Acquisitions, 1987-2008 .....	110
Expenditures, 1987-2008 .....	111
Circulation and Usage Statistics, 1987-2008 .....	112



# GENERAL INFORMATION

# GENERAL INFORMATION



JESUIT COLLEGES AND UNIVERSITIES  
IN THE UNITED STATES

Founded			Province
1789	Georgetown University	Washington, D.C.	Maryland
1818	Saint Louis University	St. Louis, Missouri	Missouri
1830	Spring Hill College	Mobile, Alabama	New Orleans
1831	Xavier University	Cincinnati, Ohio	Chicago
1841	Fordham University	New York, New York	New York
1843	College of the Holy Cross	Worcester, Massachusetts	New England
1851	Saint Joseph's University	Philadelphia, Pennsylvania	Maryland
1851	Santa Clara University	Santa Clara, California	California
1852	Loyola College in Maryland	Baltimore, Maryland	Maryland
1855	University of San Francisco	San Francisco, California	California
1863	Boston College	Boston, Massachusetts	New England
1870	Canisius College	Buffalo, New York	New York
1870	Loyola University Chicago	Chicago, Illinois	Chicago
1872	Saint Peter's College	Jersey City, New Jersey	New York
1877	Regis University	Denver, Colorado	Missouri
1877	University of Detroit Mercy	Detroit, Michigan	Detroit
1878	Creighton University	Omaha, Nebraska	Wisconsin
1881	Marquette University	Milwaukee, Wisconsin	Wisconsin
1886	JOHN CARROLL UNIVERSITY	Cleveland, Ohio	Detroit
1887	Gonzaga University	Spokane, Washington	Oregon
1888	University of Scranton	Scranton, Pennsylvania	Maryland
1891	Seattle University	Seattle, Washington	Oregon
1910	Rockhurst University	Kansas City, Missouri	Missouri
1911	Loyola Marymount University	Los Angeles, California	California
1912	Loyola University New Orleans	New Orleans, Louisiana	New Orleans
1942	Fairfield University	Fairfield, Connecticut	New England
1946	Le Moyne College	Syracuse, New York	New York
1954	Wheeling Jesuit University	Wheeling, West Virginia	Maryland

## HISTORY

- 1876 First invitation of Bishop Richard Gilmour to the Buffalo Mission Jesuits to establish a college in Cleveland.
- 1886 St. Ignatius College is founded on Cleveland's West Side by Buffalo Mission Jesuits.
- 1890 St. Ignatius College is incorporated by the State of Ohio with the power to confer degrees.
- 1903 The St. Ignatius College Alumni Association (forerunner of the JCU National Alumni Association) is formed.
- 1922 First accreditation is granted by the North Central Association of Schools and Colleges.
- 1923 Sixty acres in Idlewood Village (now University Heights) are purchased for the present campus; St. Ignatius College changes name to Cleveland University, then four months later to John Carroll University.
- 1929 Fund-raising campaign begins for construction of the new University Heights campus.
- 1931 Construction starts on the new buildings. Construction suspended in February 1932; resumed in 1935.
- 1935 First class of 456 students begins studies in October at newly opened campus.
- 1945 School of Business, Economics and Government is established.
- 1949 Evening College is established; Lay Advisory Board of community leaders is formed.
- 1956 Graduate Division becomes the Graduate School.
- 1963 University launches \$19.5 million Decade of Progress Development Program to expand academic, recreational, and residential facilities.
- 1966 Cleveland industrialist James A. Bohannon donates the first million-dollar gift in the university's history, leading to construction of the Bohannon Science Center.
- 1968 College of Arts and Sciences becomes officially coeducational.
- 1969 University governance is reorganized under a new Board of Trustees, with three-fourths lay and one-fourth Jesuit membership. The John Carroll University Jesuit Community is separately incorporated.

- 1982 Cleveland businessman Walter Sutowski's gift of \$1 million spurs the American Values Campaign over its goal with commitments of \$8.4 million. Sutowski Hall is dedicated.
- 1984 A \$2.1 million grant from the Mellen Foundation of Cleveland endows a chair in finance in the School of Business.
- 1986 Centennial Festival Week highlights a year's celebration. John Carroll University begins its second century of service.
- 1987 Completion of St. Francis Chapel.
- 1988 Completion of East Hall (dedicated in 1997 as Hamlin Hall).
- 1989 Completion of the Bruening Hall addition, the Nathan Dauby Plaza, and the renovation of the School of Business.
- 1990 Completion of New Hall (dedicated in 1993 as Campion Hall).
- 1991 Completion of baseball stadium and Ralph Vince Fitness Center.
- 1992 Expansion of parking facilities.
- 1993 The University receives the largest philanthropic gift in its history, \$10 million for endowment from the F. J. O'Neill Charitable Corporation.
- 1994 The T. P. O'Malley, S.J., Center for Communications and Language Arts is opened and dedicated. Varsity Gymnasium is dedicated as the Don Shula Sports Center. Student Center is named for D. J. Lombardo.
- 1995 Dedication of the John G. and Mary Jane Breen Learning Center, an addition that doubles the size of Grasselli Library. Successful completion of a \$50 million capital campaign to increase endowment and to add to major building facilities.
- 1996 Celebration of Cleveland's Bicentennial and John Carroll University's 110th anniversary. Hosted the Suenens International Symposium. Dedication of the John M. and Mary Jo Boler School of Business.
- 1997 A record \$17,395,000 was raised in philanthropic gift support prompted by a \$10 million Challenge Grant from John M. '56 and Mary Jo Boler. Completion of the new Jesuit residence, Schell House.
- 1998 Dedication of the St. Ignatius of Loyola statue, a gift of the Class of 1962. Bernet hall renovated and reopened with suite units.
- 1999 Edward M. Muldoon Center for Entrepreneurship established. Schott student dining hall renovated and modernized.

- 2000 Rodman Hall renovation completed to now house administrative offices. Labyrinth built on Rodman Terrace. Charles and Helen Dolan pledge \$20 million toward the construction of new science and technology center.
- 2001 A \$7 million renovation of Administration Building completed including all classrooms being equipped with audio, video, and internet capabilities. Groundbreaking for the Dolan Center for Science and Technology. Fairmount Circle shopping center purchased.
- 2002 Public announcement of \$125 million campaign. Renovation of athletic facilities including Don Shula Stadium begun. Jack and Mary Jane Breen make \$3 million gift to support Catholic Studies. Board of Trustees renamed Board of Directors; Board of Regents created.
- 2003 Renovations of athletic facilities completed; Tony DeCarlo Varsity Center dedicated. The Dolan Center for Science and Technology opened and dedicated. Don Shula Stadium at Wasmer Field completed and dedicated. Entire 60-acre campus becomes ubiquitous wireless environment as a result of \$1.2 million gift from Tim Donahue and partnership with Nextel. Said Nursi Chair in Islamic Studies established.
- 2004 Four apartment buildings near Fairmount Circle acquired. Capital campaign concluded with a \$10 million gift from Frank and Helen Schilling. Gifts and pledges exceed \$135 million, surpassing the most ambitious campaign goal in university history. Served as a major host of the International Children's Games.
- 2007 New financial aid initiative launched to aid Ohio's low-income families. Sasaki Associates, Inc., retained to help prepare a campus master plan. University presents new Vision, Mission, Core Values and Strategic Initiatives Statement. Three major gifts totalling \$6 million received from Mary Jo and John Boler ('56), Mary Jane ('91, '94G) and Jack Breen ('56), and Barbara ('62, '67G, '80G) and John Schubert. Hosted Heartland Delta V Convergence.
- 2008 Purchased Corinthian apartment building on Fairmount Circle and the temple property on Green Road. Received gift of the *Prophets Edition of The Saint John's Bible*. Built new state-of-art television studio in O'Malley Center. Renovated LSC Conference Room, Murphy Room, Jardine Room and Schott Student Dining Hall. Renovated Corbo Athletic room including new equipment. Installed new wireless campus network.

## **Vision, Mission, Core Values and Strategic Initiatives Statement**

### **Vision**

John Carroll University will graduate individuals of intellect and character who lead and serve by engaging the world around them and around the globe.

### **Mission**

As a Jesuit Catholic university, John Carroll inspires individuals to excel in learning, leadership, and service in the region and in the world.

### **Core Values**

**The university's core values include a commitment to learning in order to create:**

- An environment of inquiry which embraces Jesuit Catholic education as a search for truth where faith and reason complement each other in learning. In pursuit of our educational mission, the university welcomes the perspectives and participation in our mission of faculty, staff, students, and alumni, of all faiths and of no faith.
- A rigorous approach to scholarship that instills in our graduates the knowledge, eloquence, sensitivity, and commitment to embrace and to live humane values.
- A campus committed to the intellectual, spiritual, emotional, and physical development of each student.
- An inclusive community where differing points of view and experience are valued as opportunities for mutual learning.
- A culture of service and excellence that permeates every program and office.
- A commitment to sharing our gifts in service to each other and the community.
- A campus that responds to demographic, economic, and social challenges.
- An appreciation that our personal and collective choices can build a more just world.

### **Strategic Initiatives**

**The following initiatives are essential to the university being recognized as a center of learning and service:**

- Create a diverse community of faculty, staff, alumni and friends dedicated to advancing the university's vision, mission, and core values.
- Create a learning community of outstanding teacher-scholars characterized by the commitment to student achievement.
- Create a talented cohort of service-oriented staff committed to achieving and being recognized as a center of learning and service.
- Recruit, enroll, retain, and graduate a talented, diverse student body prepared for today's global reality and committed to learning, leadership and service that will engage the world.
- Secure resources necessary to foster an extraordinary learning experience and promote John Carroll's mission as a Jesuit Catholic university.
- Assist in responding to demographic, economic, and social challenges in our region in order to support investment and employment opportunities and build confidence in our shared future.

## ACCREDITATION AND MEMBERSHIPS OF THE UNIVERSITY

### Accreditation:

AACSB International -- The Association to Advance Collegiate Schools of Business (Business and Accounting)

American Chemical Society

Council on Accreditation of Counseling and Related Educational Programs

National Council for Accreditation of Teacher Education

The Higher Learning Commission: Member -- North Central Association  
([www.ncahigherlearningcommission.org](http://www.ncahigherlearningcommission.org))

Ohio State Department of Education

### Memberships include:

American Association of Colleges for Teacher Education

American Association of Collegiate Registrars and Admissions Officers

American Council on Education

American Schools of Oriental Research

Association of American Colleges and Universities

Association of Catholic Colleges and Universities

Association of College Admissions Counselors

Association of Graduate Schools in Catholic Colleges and Universities

Association of Independent Colleges and Universities of Ohio

Association of Jesuit Colleges and Universities

Council for the Advancement and Support of Education

Council of Graduate Schools in the United States

Council of Independent Colleges

EDUCAUSE - Association for Information Technology in Higher Education

Midwest Association of Graduate Schools

National Association of College and University Attorneys

National Association of Independent Colleges and Universities

National Catholic Educational Association

Ohio Athletic Conference

Ohio College Association

Ohio Foundation of Independent Colleges, Inc.

Sponsoring Consortium for the Joint Archeological Expedition to  
Tell el-Hesi (Israel)

## COLLEGE OF ARTS AND SCIENCES

The educational experience at John Carroll University provides opportunities for the students to develop as total human persons. They should be well grounded in liberalizing, humanizing arts and sciences; proficient in the skills that lead to clear, persuasive expression; trained in the intellectual discipline necessary to pursue a subject in depth; aware of the interrelationship of all knowledge and the need for integration and synthesis; able to make a commitment to a tested scale of values and to demonstrate the self-discipline necessary to live by those values. . . . From Mission Statement

## GRADUATE MAJORS AND DEGREES

### Master of Arts

Biology	Education	Integrated Science
Communications Management	English	Mathematics
Community Counseling (PC and PCC)	History	Nonprofit Administration
	Humanities	Religious Studies

### Master of Education

Administration	School Counseling	School-Based Program
Educational Psychology	Professional Teacher	School Psychology

### Master of Science

Biology	Mathematics
---------	-------------

### Post-Master's Licensure in Education

Principal (Elem. & Secondary)	School Counselor	School Psychologist
-------------------------------	------------------	---------------------

### Post-Master's Certificate in Clinical Counseling

### Post-Master's Certificate in Nonprofit Management

Certificates of Advanced Studies:	Assessment, Research and Measurement
	Religious Studies

## UNDERGRADUATE MAJORS AND DEGREES

### Bachelor of Arts or Bachelor of Arts in Classics

Art History	History	Philosophy
Classical Languages (Greek, Latin)	Humanities	Physics
Classical Studies	Mathematics Teaching	Physical Education and Exercise Science
Communications	Middle Childhood Education	Political Science
Economics	Modern Languages (French, German, or Spanish)	Religious Studies
Early Childhood Education	Multi-Age Education	Sociology
English		

### Bachelor of Science

Biology	Computer Science	Mathematics
Cellular & Molecular Biology	Engineering Physics	Physics
Chemistry	Environmental Science	Psychology
Computer Information Systems		

### OPTIONAL MINORS

American Politics	Engineering Physics	Philosophy
Art History	English	Physical Education and Exercise Science
Biology	Foreign Affairs	Physics
Business (through Sch of Bus)	French	Political Science (general)
Chemistry	German	Probability & Statistics
Classical Studies	Greek	Psychology
Communications	History	Religious Studies
Computer Science	Humanities	Sociology
Creative Writing	Latin	Spanish
Economics	Mathematics	

### INTERDISCIPLINARY CONCENTRATIONS

Africana Studies	Environmental Studies	Modern European Studies
Aging Studies	International Business	Neuroscience
Biochemistry/Molecular Biology	International Economics & Modern Language	Perspectives on Sex & Gender
Catholic Studies	International Studies	Political Communication
East Asian Studies	Italian Studies	Public Administration & Policy Studies
Economics/Mathematics	Latin American Studies	

### OTHER PROGRAMS

Adolescent/Young Adult Education Licensure	Borromeo Institute	Program in Applied Ethics
Arrupe Scholars Program for Social Action	Cardinal Suenens Program	Poverty and Solidarity Program
	Honors Program	The Bishop Anthony M. Pilla Program in Italian American Studies
	Military Science	

### THE CORE CURRICULUM IN THE LIBERAL ARTS

The John Carroll Core Curriculum in the Liberal Arts is informed by the principles that issue from the University's mission as a Catholic and Jesuit institution of higher learning. Accordingly, the Core emphasizes the development of whole human persons who are educated in the humanizing arts and sciences; skilled in expression and in scholarly investigation; and aware of the interrelationship of all knowledge and the interdependence of all peoples. Moreover, it promotes the integration of faith and culture by imparting a deeper knowledge of, and respect for, the students' own cultural and religious traditions as well as those of others. Finally, it highlights intellectual, moral and spiritual principles, and the responsible social actions which flow from them.



## JOHN M. AND MARY JO BOLER SCHOOL OF BUSINESS

The mission of the Boler School of Business is to develop and inspire tomorrow's leaders through educational excellence in the Jesuit tradition. Business education began at John Carroll University with the establishment of a Department of Business Administration in 1934 in the college of Arts and Sciences to provide professional training for students aspiring to positions of responsibility in the business world. This department was expanded in 1945 into the School of Business, and in 1974 expanded its offerings to include a Master in Business Administration degree. In March 1996, in recognition of the many generous contributions to the University from John M. and Mary Jo Boler, the School was named after them. Mr. Boler is a 1956 alumnus of the School. In 2001 a Master of Science in Accountancy degree was added to the Boler School's graduate offerings. The accountancy and business administration programs are accredited at both bachelor's and master's levels by the Association to Advance Collegiate Schools of Business (AACSB International).

### MAJORS AND DEGREES

Master of Business Administration  
Master of Science in Accountancy

Bachelor of Science in Business Administration majors:

Accounting	Finance
Business Information Systems	Management
Business Logistics	Marketing

Bachelor of Science in Economics

### OTHER PROGRAMS

Minor in Business - offered to students who choose to major in a field of study within the College of Arts and Sciences but would like to receive a foundation in business. Minors may be completed in the following areas:

Business  
Economics

Sequences - designed for post-baccalaureate students seeking knowledge in specific fields of study. The following areas of concentration are available:

Accounting  
Marketing  
Human Resources Management

## **INFORMATION TECHNOLOGY SERVICES**

The Information Technology Services Department oversees and provides assistance for most computer and network functions, video services, and telephone services on campus. The main office is located on the fourth floor of Rodman Hall.

The major equipment serving the campus consists of

40 Intel-based servers – used for Web, Campus Card, event scheduling and academic applications including the Blackboard course management system

3 IBM RS6000 based Servers – used for the Banner2000 administrative software system, which is supported on Oracle 9 database software

4 RISC-based Sun Servers – used for network support and management

2 Clustered Network Appliance Storage Servers hosting 4 terabytes of storage for campus network users

3 VMware servers running 9 virtual systems

The Campus Wide Gigabit Ethernet network (JCUNet), provides connection to all faculty and administrative offices and student residence rooms. The campus network has a Gigabit connection to the AT&T Opt-E-Man network. This Gigabit connection connects to the Ohio Academic Resources Network (OARNet), with a capacity of 150 Mb to the commodity Internet as well as 5Mb to Abilene (Internet 2) – the most advanced version of the Internet, which supports high-speed multimedia communications and 30 Mb to OARNet intra-Ohio which provides access to other educational institutions within the state.

JCUNet can be accessed everywhere on campus through computers using wireless technology.

### **Faculty Technology Innovation Center (FTIC)**

The FTIC is equipped with the latest hardware and software resources and is dedicated to advancing the use of technology to enhance teaching, learning, and research, through a combination of faculty workshops, multimedia development assistance, and one-on-one consultations. The FTIC is located on the first floor of the Bohannon Center, and is staffed collaboratively by technologists from several university departments.

### **Administrative Software System**

The SunGard Higher Education Banner integrated software system supports Admissions and Financial Aid, Registrar, Student Life, Alumni/Development, Human Resources, Finance and other related services throughout the campus; most of these functions are fully Web-enabled. Campus event scheduling, including a Web accessible event calendar, is supported by Resource25 software.

### **Residence Halls**

All student residence rooms have a connection for each individual resident providing high-performance access to the Internet, Internet 2, and campus computing/network resources. Each room has one phone connection with a private voicemail box for each resident, and one cable TV connection. Wireless access is available in all residence rooms.

### Public Labs and Classrooms

There are 600 PCs and 25 Macs installed in classrooms and labs with full high-performance access to the campus LAN and the Internet at various locations on campus, including the following:

#### Public Computer Labs

Location	Computers	Laser Printers
Boler School of Business SB 235	46 PCs	3
Dolan Science Center E 337	32 PCs	2
Grasselli Library - Computer Commons	38 PCs	3
- Graduate Lounge	3 PCs	1
Lombardo Student Center - Lab	8 PCs	1
- Café	6 PCs	1
Admin Bldg Undergraduate Lounge	4 PCs	1
<b>Total</b>	<b>137 PCs</b>	<b>12 Laser Printers</b>

#### Multimedia Class, Lab, and Conference Rooms

Multimedia Room Type	Location	Total
<b>Basic</b> -- multimedia capability including a PC and ceiling mounted LCD projector, full high-performance access to Internet	Admin Bldg: AD303 Dolan Science Center: E111, E122, E240, W116, W120, W128, W134, W217, W315, W318 Lombardo Student Center: GY 102 O'Malley Center: OC25, OC26 (both have control systems)	Rooms: 14 PCs: 14
<b>Basic with student PCs</b>	O'Malley Center: OC201 (25 Macs), Grasselli Electronic Classroom (21PCs)	Rooms: 2 PC/Macs: 46
<b>Standard</b> -- equipped for advanced electronic multimedia instructor podium with integrated touch-screen control station, multimedia PC, DVD, VCR, document camera	Admin Bldg: AD25, AD26, AD29, AD47, AD48, AD49, AD54, AD225, AD230, AD232, AD233, AD235, AD248, AD249, AD258, AD259, B301, B304 Boler School of Business: BR18, BR19, BR22, BR33, BR34, SB106, SB107, SB120 O'Malley Center: OC103, OC114, OC116, OC212 Dolan Science Center: A202, A203, E116, E120, E130, E134, E138, E227, E228, E235, E241, E244, E324, E335, E336, E342, E346, E352, W139, W213, W220, W230, W233, W329, W334 Lombardo Student Center: LC 37 (LSC Conference Room), LC 45 (Jardine)	Rooms: 57 PCs: 57
<b>Standard plus student PCs</b>	Boler School of Business: BR43 (37 PCs), SB118 (33PCs) Dolan Science Center: E133 (9PCs), E223 (29PCs), E233 (29PCs), E243 (33PCs)	Rooms: 6 PCs: 170
<b>Theatre</b> -- fully multimedia equipped, with world format media capabilities, augmented by Dolby Digital theatre sound	Dolan Science Center: Donahue Auditorium A111 Admin Building: AD226	Rooms: 2 PCs: 2
<b>Student PCs only</b> (no multimedia)	O'Malley Center: OC101 Language Learning Center (16 PCs, 2 Macs); OC203 (26 PCs); OC211 (25 PCs)	Rooms: 3 PC/Macs: 69
<b>Totals</b>		<b>Rooms: 84 PCs: 358</b>

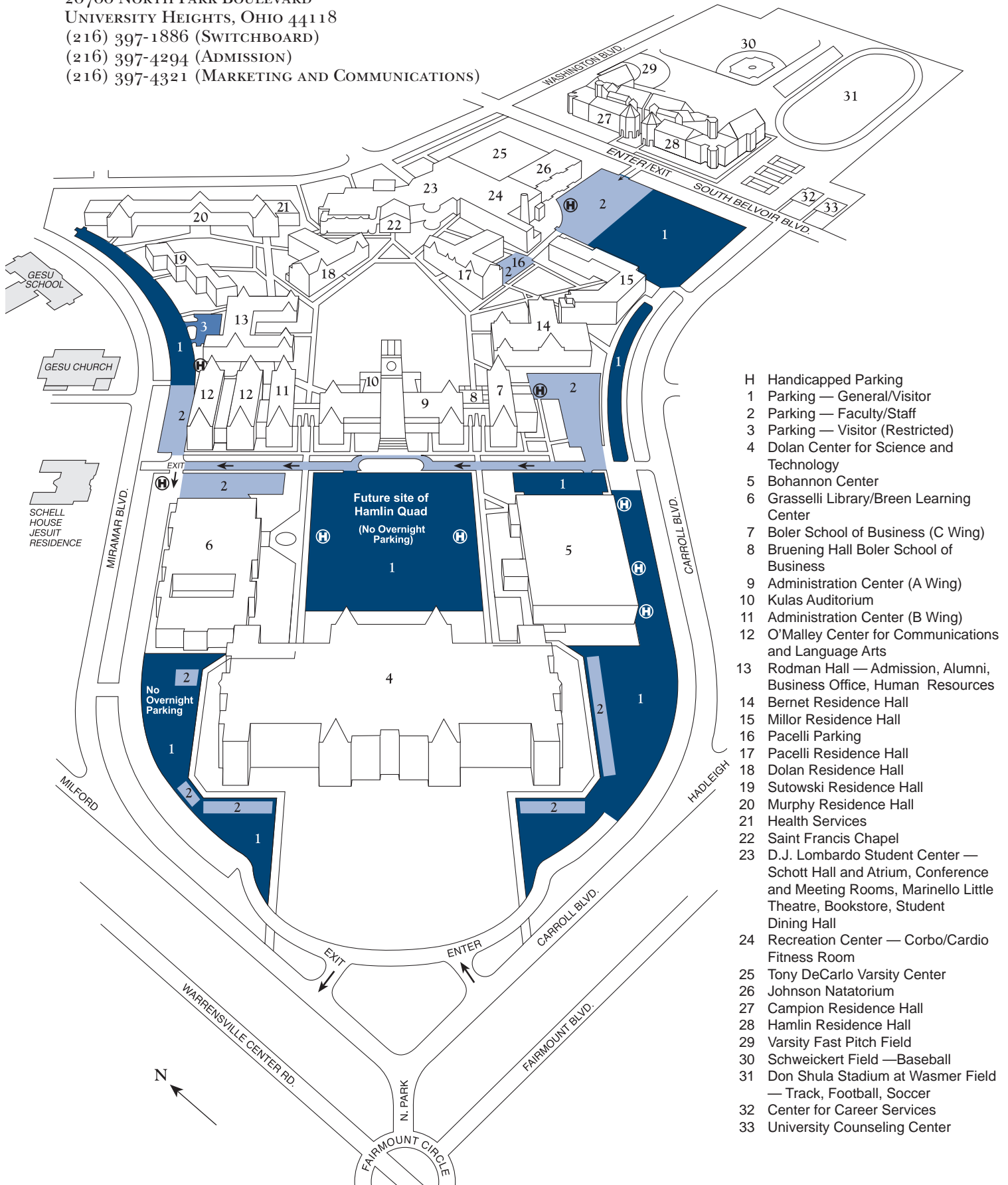
## UNIVERSITY BUILDINGS

BUILDING	PURPOSE	DATE	SQ. FT.
Administration Bldg.	Classroom; administrative and faculty offices; Kulas Auditorium (Seating: 1126)	1935	150,700
Rodman Hall	Former Jesuit Residence now housing: Business Office; Admission & Financial Aid; University Advancement; Information Serv.	1935	44,200
Bernet Hall	Senior student residence hall, renovated in 1998 to suite-type units (capacity: 111)	1935	29,000
Boiler House	Heating equipment, maintenance shop	1935	8,700
Pacelli Hall	Women's residence hall (Capacity: 215)	1952	40,200
Dolan Hall	Continuing Student residence hall (Capacity: 219)	1955	42,000
Tony DeCarlo Varsity Center	Varsity gymnasium (seating: 1,289), Ralph Vince Fitness Center, athletic offices, and facilities	1957	64,800
D. J. Lombardo Student Center	Schott Student Dining Room; Faculty Dining Room; meeting rooms	1959	52,500
Grasselli Library	Library facilities; Chesterton Room	1961	62,400
Murphy Hall	First Year student residence hall (Capacity: 408)	1964	95,600
Bohannon Center	Classrooms; Faculty Technology Innovation Center; special programs associated with ED/AS Dept.; Institute for Educational Renewal; Lighting Institute; social service programs; storage areas	1967	134,507
Student Activities Annex	Snack Bar; Bookstore; Little Theatre; Administrative Offices; Military Science Dept.	1969	34,145
Johnson Natatorium	Swimming and diving pools	1975	24,000
Carrollodge	Main house, caretaker's cottage, pavilion, barn located on 22 acres in Russell Twp., OH, used for Campus Ministry and meetings	1976	6,000
Sutowski Hall	First Year student residence hall (Capacity: 171)	1978	41,000
Millor Hall	Continuing Student residence hall (Capacity: 242)	1981	50,000

Recreation Center Complex	Schott Atrium; Student Activities offices; RecPlex Gym with indoor track; intramural center; Student Union offices; student radio station WJCU 88.7 FM	1985	53,000
Fritzsche Religious Center--St. Francis Chapel	Chapel; Campus Ministry offices	1987	12,800
Hamlin Hall	Continuing Student residence hall (Capacity: 293)	1988	68,531
ThornAcres	Main house and cottage with six individual lakes on 57 acres located in East Claridon, OH, with trails and tennis court used by Student Affairs and University groups	1988	3,200
Bruening Hall	New addition to School of Business; classrooms and faculty offices	1989	11,800
Schott Hall	Additional dining facilities to seat 300 on ground floor; large seminar room to seat 300 on 2nd floor	1989	14,030
Campion Hall	Continuing Student residence hall (Capacity: 309)	1990	74,895
Schweickert Field	Baseball field, spectator stands, press box and storage	1991	300
2563 Belvoir	Center for Career Services	1992	3,279
2567 Belvoir	University Counseling Center	1992	2,939
T. P. O'Malley, S.J., Center for Communications and Language Arts	Houses departments of English, Classical and Modern Languages and Cultures, and Communications and Theatre Arts; also classrooms and TV studio	1994	55,148
John G. and Mary Jane Breen Learning Center	Addition to Grasselli Library to house additional collections and student study space	1995	50,960
Schell House	Jesuit residence	1997	21,000
Dolan Center for Science and Technology	Classrooms, laboratories and faculty offices for Biology, Chemistry, Mathematics and Computer Science, Physics, and Psychology; Muldoon Atrium; 250 seat Donahue Auditorium	2003	265,000
Don Shula Stadium	Wasmer football/soccer field, athletic offices, Shula memorabilia room, weight room, training room, restrooms, storage (Capacity: 5,500)	2003	28,218
TOTAL GROSS SQ. FT.			1,544,852

Source: Executive Director of Facilities Management

20700 NORTH PARK BOULEVARD  
UNIVERSITY HEIGHTS, OHIO 44118  
(216) 397-1886 (SWITCHBOARD)  
(216) 397-4294 (ADMISSION)  
(216) 397-4321 (MARKETING AND COMMUNICATIONS)



- H Handicapped Parking
- 1 Parking — General/Visitor
- 2 Parking — Faculty/Staff
- 3 Parking — Visitor (Restricted)
- 4 Dolan Center for Science and Technology
- 5 Bohannon Center
- 6 Grasselli Library/Breen Learning Center
- 7 Boler School of Business (C Wing)
- 8 Bruening Hall Boler School of Business
- 9 Administration Center (A Wing)
- 10 Kulas Auditorium
- 11 Administration Center (B Wing)
- 12 O'Malley Center for Communications and Language Arts
- 13 Rodman Hall — Admission, Alumni, Business Office, Human Resources
- 14 Bernet Residence Hall
- 15 Millor Residence Hall
- 16 Pacelli Parking
- 17 Pacelli Residence Hall
- 18 Dolan Residence Hall
- 19 Sutowski Residence Hall
- 20 Murphy Residence Hall
- 21 Health Services
- 22 Saint Francis Chapel
- 23 D.J. Lombardo Student Center — Schott Hall and Atrium, Conference and Meeting Rooms, Marinello Little Theatre, Bookstore, Student Dining Hall
- 24 Recreation Center — Corbo/Cardio Fitness Room
- 25 Tony DeCarlo Varsity Center
- 26 Johnson Natatorium
- 27 Campion Residence Hall
- 28 Hamlin Residence Hall
- 29 Varsity Fast Pitch Field
- 30 Schweickert Field — Baseball
- 31 Don Shula Stadium at Wasmer Field — Track, Football, Soccer
- 32 Center for Career Services
- 33 University Counseling Center

# **A D M I N I S T R A T I O N**

# ADMINISTRATION



## JOHN CARROLL UNIVERSITY ADMINISTRATION

Robert L. Niehoff, S.J., Ph.D. .... President

Jonathan E. Smith, Ph.D. .... Vice President and Executive Assistant  
to the President

Maria Alfaro-Lopez, J.D. .... General Counsel

Laurie A. Frantz..... Secretary to the Board

John T. Day, Ph.D. .... Academic Vice President

James H. Krukones, Ph.D. .... Associate Academic Vice President

Nicholas R. Santilli, Ph.D. .... Associate Academic Vice President for  
Planning and Assessment

Lauren L. Bowen, Ph.D. .... Associate Academic Vice President for  
Academic Programs & Faculty Diversity

Linda Eisenmann, Ed.D. .... Dean of the College of  
Arts and Sciences

Karen Schuele, Ph.D. .... Dean of the Boler School of Business

Brian G. Williams, M.A. .... Vice President for Enrollment

Mark D. McCarthy, Ph.D. .... Vice President for Student Affairs

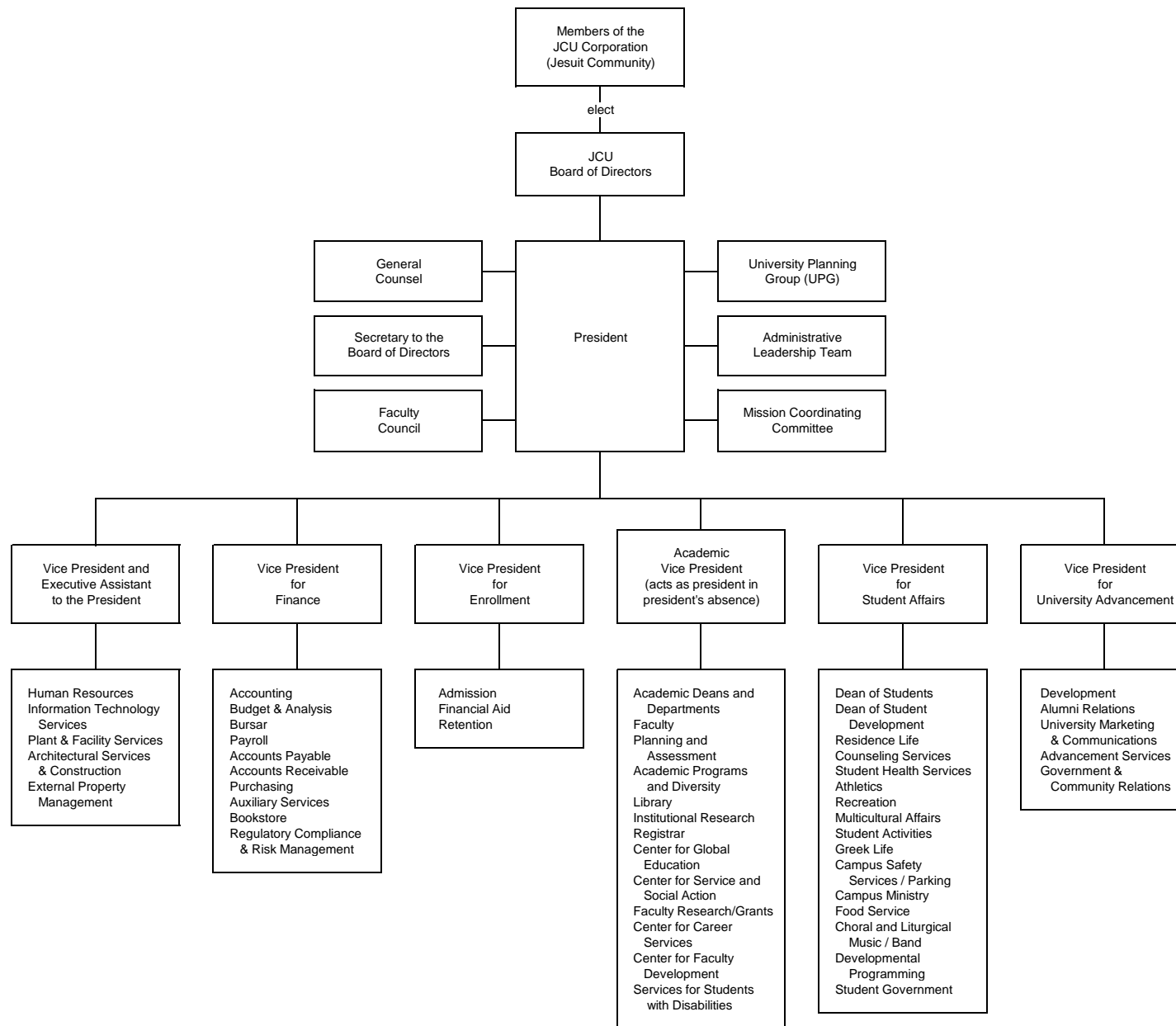
Sherri A. Crahen, Ph.D. .... Dean of Students

James Prehn, S.J., Ed.D. .... Dean of Student Development

Doreen K. Riley, M.S. .... Vice President for University  
Advancement

Richard F. Mausser, M.B.A., C.P.A. .... Vice President for Finance

## JOHN CARROLL UNIVERSITY BASIC ORGANIZATION



JOHN CARROLL UNIVERSITY  
BOARD OF DIRECTORS

ALLYN R. ADAMS '64, Board Chair Retired Partner Deloitte & Touche LLP	Committees: Ex Officio all
PATRICK V. AULETTA '72 Retired President Emeritus Key Bank, N.A.	Committees: Advancement; Corporate Governance and Nominating
NANCY CUNNINGHAM BENACCI '77 Managing Director of Equity Research KeyBanc Capital Markets	Committees: Finance (Chair); Executive
JOHN M. BOLER '56 Chairman and Founder The Boler Company.	
JOHN G. BREEN '56 Retired Chairman and CEO The Sherwin-Williams Company	Committees: Advancement; Audit
REV. MICHAEL P. CARUSO, S.J. Dept. Chair of Educational Leadership Loyola Marymount University	Committee: Academic Affairs and Planning
MARY ANN CORRIGAN-DAVIS '75 President Saint Joseph Academy Cleveland	Committees: Executive; Enrollment (Chair)
ALBERT J. DeGULIS '56 Retired Senior Vice President AllianceBernstein	Committees: Advancement; Investment
FREDERICK D. DiSANTO Chief Executive Officer Ancora Advisors	Committee: Investment
UMBERTO P. FEDELI, '82 President and CEO The Fedeli Group	Committee: Corporate Governance and Nominating
JOSÉ C. FELICIANO '72, (Vice Chair) Partner (Attorney) Baker & Hostetler, LLP	Committees: Corporate Governance and Nominating (Chair); Executive

DANIEL J. FRATE '83 Vice Chairman, Retail Banking National City Bank	Committee: Marketing
CARL D. GLICKMAN President The Glickman Organization	Committee: Investment
REV. HOWARD J. GRAY, S.J. Assistant to the President for Special Projects Georgetown University	Committees: Executive; Academic Affairs and Planning (Chair)
ROBERT D. GRIES President Gries Investments	Committee: Investment
EVELYN JENKINS GUNN '72G Carnegie Scholar and Fellow (NBCT) National Academy	Committee: Academic Affairs and Planning
ROBERT A. HAGER '84 Partner Buckingham, Doolittle & Burroughs LLP	Committee: Audit
ANNETTE L. HAILE '74 Retired Vice President IBM	Committees: Student Affairs (Chair); Enrollment; Executive
RICHARD M. HAMLIN, Sr. '49 Chairman The Reserve Group, Inc.	Committee: Finance
HOWARD W. (HODDY) HANNA, III '69 Chairman and CEO Howard Hanna Holdings, Inc.	Committees: Advancement; Finance
KENNETH R. HONECKER, JR. '04 President Ken Honecker Consulting	Committee: Enrollment
JACK KAHL '62 President and CEO Jack Kahl and Associates, LLC	Committee: Marketing
REV. TIMOTHY P. KESICKI, S.J. '84 Provincial The Detroit Province of the Society of Jesus	Committee: Student Affairs

JAMES F. KIRSCH  
Chairman, President and CEO  
Ferro Corporation

Committees: Executive; Marketing (Chair)

CHARLES J. KOCH  
Former Chairman and CEO  
Charter One Bank

Committee: Finance

RICHARD J. KRAMER, '86  
President  
North American Tire  
Goodyear Tire and Rubber Company

Committee: Audit

REV. PATRICK LEE, S.J.  
Provincial  
The Oregon Province of the Society of Jesus

Committee: Student Affairs

REV. MICHAEL J. MARCO, S.J.  
President  
Walsh Jesuit High School

Committee: Enrollment

MICHAEL J. MERRIMAN '78  
Operating Advisor  
Resilience Capital Partners, LLC

Committee: Marketing

REV. J-GLENN MURRAY, S.J.  
Parochial Vicar  
Saint Aloysius Gonzaga

Committee: Student Affairs

JAMES M. MYERS '80  
Chief Executive Officer  
PETCO Animal Supplies, Inc.

Committee: Marketing

REV. ROBERT L. NIEHOFF, S.J.  
President  
John Carroll University

Committees: Ex Officio all

GERALD F. O'CONNELL '61  
Chief Executive Officer  
O'SEA Investments, LLC

Committees: Advancement (Chair);  
Executive

ARCHBISHOP PATRICK PINDER  
Archbishop of Nassau, The Bahamas

Committees: Advancement; Student Affairs

AUDREY GILBERT RATNER  
Community Leader  
Cleveland and Chicago

Committee: Student Affairs

JAMES S. REID, JR. (DIR. EMERITUS)  
Retired CEO  
The Standard Products Company

CHARLES A. RINI, SR.  
Chairman and CEO  
Rini Realty Company

Committee: Marketing

PATTI ROSENFELD '87  
Philanthropist and Community Leader

Committee: Student Affairs

BARBARA S. SCHUBERT '62,'67G,'80G  
Retired Associate Director  
Ohio Ballet

Committees: Academic Affairs & Planning;  
Enrollment; Corp. Governance & Nominating

MELANIE A. SHAKARIAN '00  
Director of Development  
The Legal Aid Society of Cleveland

Committees: Student Affairs; Enrollment

JOHN SHERWIN, JR. '68  
President  
Mid-Continent Ventures, Inc.

Committees: Audit (Chair); Executive

DAVID W. SHORT '81  
Chairman of the Board  
American Funds

Committees: Executive; Investment (Chair)

REV. LORN J. SNOW, S.J.  
Pastor  
Church of the Gesu

Committee: Marketing

JOSEPH D. SULLIVAN '53 (DIR. EMERITUS)  
Retired Partner  
Calfee, Halter & Griswold, LLP

DANIEL C. SUSSEN '51  
Retired Chairman  
Ohio Division  
General Parts, Inc., and

Committee: Finance

JOHN O'NEILL WINCHESTER '67  
Executive Vice President, Treasurer  
and Director  
The QUIKRETE Companies

Committee: Finance

## PRESIDENTS OF JOHN CARROLL UNIVERSITY

- |     |           |                               |
|-----|-----------|-------------------------------|
| 1.  | 1886-1888 | John B. Neustich, S.J.        |
| 2.  | 1888-1893 | Henry Knappmeyer, S.J.        |
| 3.  | 1893-1897 | Joseph P. LeHalle, S.J.       |
| 4.  | 1897-1902 | Godfrey Schulte, S.J.         |
| 5.  | 1902-1906 | John Zahm, S.J.               |
| 6.  | 1906-1910 | George J. Pickel, S.J.        |
| 7.  | 1910-1915 | John B. Furay, S.J.           |
| 8.  | 1915-1919 | William B. Sommerhauser, S.J. |
| 9.  | 1919-1925 | Thomas J. Smith, S.J.         |
| 10. | 1925-1928 | Murtha J. Boylan, S.J.        |
| 11. | 1928-1937 | Benedict J. Rodman, S.J.      |
| 12. | 1937      | William M. Magee, S.J.        |
| 13. | 1937      | George J. Pickel, S.J.        |
| 14. | 1937-1942 | Edmund C. Horne, S.J.         |
| 15. | 1942-1946 | Thomas J. Donnelly, S.J.      |
| 16. | 1946-1956 | Frederick E. Welfle, S.J.     |
| 17. | 1956-1967 | Hugh E. Dunn, S.J.            |
| 18. | 1967-1970 | Joseph O. Schell, S.J.        |
| 19. | 1970-1980 | Henry F. Birkenhauer, S.J.    |
| 20. | 1980-1988 | Thomas P. O'Malley, S.J.      |
| 21. | 1988-1995 | Michael J. Lavelle, S.J.      |
| 22. | 1996-1998 | John J. Shea, S.J.            |
| 23. | 1998-2005 | Edward Glynn, S.J.            |
| 24. | 2005-     | Robert L. Niehoff, S.J.       |

## ACADEMIC DEANS

## COLLEGE OF ARTS &amp; SCIENCES

## Prefect of Studies

1886-1887	Herman Kerckhoff, S.J.
1887-1888	Joseph Gaechter, S.J.
1888-1891	Henry Knappmeyer, S.J.
1891-1892	James A. Rockliff, S.J.
1892-1893	Benedict Guldner, S.J.
1893-1896	Joseph LeHalle, S.J.
1896-1902	Godfrey Schulte, S.J.
1902-1905	John I. Zahm, S.J.
1905-1908	George J. Pickel, S.J.
1908-1909	John J. McCormick, S.J.
1909-1915	Louis Kellinger, S.M.

## Dean

1915-1919	Thomas J. Smith, S.J.
1919-1926	Edward J. Bracken, S.J.
1926-1927	Leonard Otting, S.J.
1927-1928	George A. Deglemen, S.J.
1928-1934	Albert C. Fox, S.J.
1934	Ralph J. Gallagher, S.J. (Acting)
1934-1938	Edward J. Bracken, S.J.
1938-1958	Edward C. McCue, S.J.
1958-1962	Joseph F. Downey, S.J.
1962-1964	Thomas P. Conry, S.J.
1964-1967	Joseph O. Schell, S.J.
1967-1977	Laurence V. Britt, S.J.
1977-1982	Theodore W. Walters, S.J.
1982-1983	William F. O'Hearn (Acting)
1983-1988	W. Francis Ryan
1988-1994	Frederick F. Travis
1994-2004	Nick R. Baumgartner
2004-2005	Sally H. Wertheim (Interim)
2005-	Linda Eisenmann

## BOLER SCHOOL OF BUSINESS

1945-1956	Fritz W. Graff
1956-1970	Arthur J. Noetzel
1970-1975	Francis J. McGurr
1975-1977	Michael J. Lavelle, S.J.
1977-1984	V. Ray Alford
1984-1985	James E. Piercy (Acting)
1985-2005	Frank J. Navratil
2005	Thomas J. Zlatoper (Interim)
2006-2007	Luis Ma. R. Calingo
2007-	Karen Schuele

## GRADUATE SCHOOL

1956-1957	Henry F. Birkenhauer, S.J.
1957-1958	William J. Millor, S.J.
1958-1961	Edward C. McCue, S.J.
1961-1962	William J. Millor, S.J.
1962-1967	Richard J. Spath
1967-1976	Donald P. Gavin
1976-1986	Louis G. Pecek
1986-1993	Sally H. Wertheim
1993-1994	Joseph B. Miller
1994-1995	Sally H. Wertheim
1995	Joseph B. Miller (Acting)
1996-1999	Sally H. Wertheim
1999-2001	Thomas J. Zlatoper (Interim)
2001-2007	Mary E. Beadle
2007-2008	Sally H. Wertheim (Interim)



## DEGREES CONFERRED

1954-2008

Year	Bachelors Arts and Sciences	B.S. in B.A. B.S. in Ec.	M.A. and M.S.*	M.Ed.	M.B.A.	Honorary	Total
1954	146	52	31	--	--	5	234
1955	203	66	24	--	--	4	297
1956	170	70	36	--	--	6	282
1957	245	82	37	--	--	3	367
1958	226	50	25	--	--	4	305
1959	273	44	50	--	--	5	372
1960	290	59	50	--	--	4	403
1961	239	59	60	--	--	3	361
1962	291	69	66	--	--	2	428
1963	293	95	85	--	--	2	475
1964	351	107	93	--	--	1	552
1965	381	91	100	--	--	--	572
1966	339	82	130	--	--	2	553
1967	399	103	137	--	--	1	640
1968	416	136	162	--	--	1	715
1969	452	151	181	--	--	1	785
1970	456	159	182	--	--	1	798
1971	411	154	205	--	--	1	771
1972	423	155	179	--	--	1	758
1973	464	143	243	--	--	2	852
1974	406	142	154	--	--	1	703
1975	415	150	157	--	--	1	723
1976	343	157	118	30	--	1	649
1977	334	177	77	76	17	--	681
1978	262	167	60	115	17	3	624
1979	326	163	60	98	22	5	674
1980	261	168	46	94	25	2	596
1981	304	195	62	57	34	2	654
1982	342	207	56	80	19	3	707
1983	333	194	56	76	28	3	690
1984	337	183	75	59	23	2	679
1985	358	154	62	46	33	5	658
1986	379	176	63	49	17	4	688
1987	349	171	60	50	29	4	663
1988	406	179	65	56	28	2	736
1989	419	173	68	65	22	4	751

Year	Bachelors Arts and Sciences	B.S. in B.A. B.S. in Ec.	M.A. and M.S.*	M.Ed.	M.B.A.	Honorary	Total
1990	407	174	58	66	22	2	729
1991	502	190	70	118	23	2	905
1992	590	217	73	107	34	3	1,024
1993	566	208	84	101	37	2	998
1994	545	242	73	115	55	2	1,032
1995	524	200	116	114	68	5	1,027
1996	558	157	97	140	52	7	1,011
1997	539	193	85	144	51	5	1,017
1998	512	189	78	128	54	5	966
1999	603	219	51	143	49	1	1,066
2000	494	210	70	108	53	2	937
2001	506	222	65	117	69	2	981
2002	510	267	55	138	89	2	1,061
2003	542	272	50	100	100	4	1,068
2004	499	271	68	100	81	1	1,020
2005	519	224	67	77	82	1	970
2006	496	228	109	82	54	1	970
2007	522	223	105	59	63	4	976
2008	483	195	97	76	66	1	918
TOTAL	21,959	8,784	4,786	2,984	1,416	143	40,072

\*From 1966-1980, this figure also includes MAT and MST degrees.

Note: Figures are as shown in HEGIS and IPEDS surveys, for which the reporting year begins July 1 the previous year. In this listing, for example, "2008" includes graduates in Summer 2007, Winter, and Spring 2008 commencements.

Source: Registrar's Office and Institutional Research

MINORITY STATISTICS ON DEGREES AWARDED  
1996 - 2008

BACHELOR DEGREES AWARDED																
	Non-Res Alien		African American		Amer Ind/Alask Nat		Asian or Pacific Isl		Hispanic		White Non-Hispanic		Other/Unknown		Total # of UG Degrees	All Minorities
	#	%	#	%	#	%	#	%	#	%	#	%	#	%		%
WINTER, SPRING & SUMMER																
1996	0	0.0	28	4.0	0	0.0	13	1.9	8	1.1	650	93.0	0	0.0	699	49 7.0
1997	0	0.0	25	3.4	1	0.1	18	2.5	7	1.0	674	93.0	0	0.0	725	51 7.0
1998	0	0.0	18	2.5	2	0.3	17	2.4	7	1.0	665	93.8	0	0.0	709	44 6.2
1999	0	0.0	32	3.9	3	0.4	23	2.8	9	1.1	764	91.9	0	0.0	831	67 8.1
2000	3	0.4	21	3.0	0	0.0	14	2.0	13	1.8	656	92.8	0	0.0	707	51 7.2
2001	1	0.1	23	3.1	3	0.4	20	2.7	17	2.3	672	91.3	0	0.0	736	64 8.7
2002	1	0.1	29	3.7	2	0.3	26	3.3	16	2.0	718	90.7	0	0.0	792	74 9.3
2003	0	0.0	31	4.0	1	0.1	22	2.8	10	1.3	705	91.2	4	0.5	773	64 8.3
2004	1	0.1	32	4.3	0	0.0	14	1.9	19	2.6	678	91.0	1	0.1	745	66 8.9
2005	0	0.0	22	3.0	2	0.3	21	2.9	28	3.8	652	88.7	10	1.4	735	73 9.9
2006	0	0.0	19	2.6	1	0.1	14	1.9	12	1.6	688	93.7	0	0.0	734	46 6.3
2007	0	0.0	25	3.3	1	0.1	18	2.4	20	2.7	688	91.5	0	0.0	752	64 8.5
2008	0	0.0	21	3.2	0	0.0	13	2.0	16	2.4	612	92.3	1	2.0	663	51 7.7
MASTER DEGREES AWARDED																
	Non-Res Alien		African American		Amer Ind/Alask Nat		Asian or Pacific Isl		Hispanic		White Non-Hispanic		Other/Unknown		Total # of GR Degrees	All Minorities
	#	%	#	%	#	%	#	%	#	%	#	%	#	%		%
WINTER, SPRING & SUMMER																
1996	2	0.7	22	7.8	0	0.0	1	0.4	4	1.4	252	89.7	0	0.0	281	29 10.3
1997	4	1.5	27	10.4	0	0.0	1	0.4	0	0.0	227	87.6	0	0.0	259	32 12.4
1998	1	0.4	20	7.4	1	0.4	5	1.8	5	1.8	239	88.2	0	0.0	271	32 11.8
1999	3	1.4	18	8.2	0	0.0	3	1.4	2	0.9	193	88.1	0	0.0	219	26 11.9
2000	4	1.8	29	12.7	0	0.0	1	0.4	2	0.9	192	84.2	0	0.0	228	36 15.8
2001	4	1.5	27	9.9	2	0.7	0	0.0	2	0.7	237	87.1	0	0.0	272	35 12.9
2002	0	0.0	16	6.0	0	0.0	6	2.2	3	1.1	241	90.3	1	0.4	267	25 9.4
2003	3	1.3	12	5.1	0	0.0	4	1.7	3	1.3	209	89.3	3	1.3	234	22 9.4
2004	4	1.6	13	5.2	1	0.4	4	1.6	1	0.4	225	89.3	4	1.6	252	23 9.1
2005	1	0.4	18	7.9	1	0.4	0	0.0	3	1.3	190	89.3	14	6.2	227	23 10.1
2006	2	0.7	14	5.1	1	0.4	7	2.5	3	1.1	248	90.2	0	0.0	275	27 9.8
2007	4	2.0	23	11.6	0	0.0	1	0.5	4	2.0	167	83.9	0	0.0	199	32 16.1
2008	1	0.4	12	4.3	0	0.0	4	1.4	3	1.1	261	92.6	1	0.4	282	21 7.4

Source: Office of Institutional Research

HONORARY DEGREES CONFERRED  
Commencement 1966 - 2008

1966	Mr. James Alvin Bohannon Dr. Theodore A. Distler	Doctor of Laws Doctor of Laws
1967	Mr. William R. Daley Mr. Edgar A. Hahn Mr. Abe Silverstein	Doctor of Laws Doctor of Laws Doctor of Science
1968	Dr. Glenn T. Seaborg	Doctor of Science
1969	Honorable Edmund S. Muskie	Doctor of Laws
1970	Rev. Robert J. Henle, S.J.	Doctor of Laws
1971	Mr. William H. Taft, III	Doctor of Laws
1972	Honorable Fred R. Harris	Doctor of Laws
1973	Mr. Donald F. Shula	Doctor of Humanities
1974	Honorable Lowell P. Weicker, Jr.	Doctor of Laws
1975	Most Rev. James A. Hickey	Doctor of Divinity
1976	Mr. Bob Hope	Doctor of Humane Letters
1978	Honorable Anthony Joseph Celebrezze Mother Teresa of Calcutta Rev. Walter Jackson Ong, S.J.	Doctor of Laws Doctor of Humane Service Doctor of Humane Letters
1979	Sister Henrietta Gorris, C.S.A. Dr. Donald Carl Johanson Mr. Arthur Bertram Modell Rev. Karl Rahner, S.J. Dr. Robert Joseph White	Doctor of Humane Service Doctor of Science Doctor of Laws Doctor of Humane Letters Doctor of Science
1980	Rev. Henry F. Birkenhauer, S.J. Mr. E. Mandell de Windt	Doctor of Laws Doctor of Laws
1981	Mr. Clarence M. Mitchell, Jr. Most Rev. Anthony M. Pilla	Doctor of Laws Doctor of Humane Letters
1982	Mr. H. Chapman Rose Mr. John C. Wasmer, Sr. Mrs. Florence O'Donnell Wasmer	Doctor of Laws Doctor of Laws Doctor of Laws
1983	Mrs. Dorothy H. Gauchat Rev. William A. Kinnison Mr. William M. McVey	Doctor of Human Service Doctor of Theology Doctor of Fine Arts

1984	Ms. Dorothy Fuldheim Rev. Joseph O. Schell, S.J. Mr. Vincent Dowling	Doctor of Public Service Doctor of Laws Doctor of Fine Arts
1985	Honorable Mark O. Hatfield Mr. Allen C. Holmes Dr. Karen N. Horn Dr. Arthur J. Noetzel Dr. Robert J. Wolf	Doctor of Laws Doctor of Laws Doctor of Laws Doctor of Letters Doctor of Public Service
1986	Mr. Donald P. Gavin Rev. Howard J. Gray, S.J. Dr. Ruben F. Mettler Mrs. Nancy Clay O'Neill	Doctor of Humane Letters Doctor of Theology Doctor of Laws Doctor of Human Service
1987	Mr. John D. Drinko Msgr. George G. Higgins Mr. Fred A. Lennon Most Rev. Donald E. Pelotte, S.S.S.	Doctor of Laws Doctor of Human Service Doctor of Laws Doctor of Human Service
1988	Mrs. Sally Kenny Griswold Rev. T.P. O'Malley, S.J.	Doctor of Laws Doctor of Laws
1989	Joseph Cardinal Bernardin Rev. Walter J. Burghardt, S.J. Dr. Paul G. Gassman Frantisek Cardinal Tomasek	Doctor of Sacred Theology Doctor of Humane Letters Doctor of Science Doctor of Laws
1990	Dr. Leland Schubert Mrs. Helen Dwan Schubert	Doctor of Humane Letters Doctor of Humane Letters
1991	Mr. Shusaku Endo Rev. James E. O'Reilly, S.J.	Doctor of Letters Doctor of Divinity
1992	Dr. Michael S. Pap Mr. James S. Reid, Jr. Most Rev. Rembert G. Weakland, O.S.B.	Doctor of Laws Doctor of Laws Doctor of Laws
1993	Rev. Marino Frascati, O.de M. Dr. Bernadine P. Healy	Doctor of Divinity Doctor of Laws
1994	Mr. S. Darwin Noll Dr. Walter S. Nosal	Doctor of Laws Doctor of Laws
1995	Mr. Francis Joseph Callahan Sister Grace Mary Corbett, S.N.D. Sister Mary Regina Davala, S.N.D. Sister Mary Virginia Reesing, S.N.D. Sister Ann Marie Winchester, S.N.D.	Doctor of Laws Doctor of Divinity Doctor of Divinity Doctor of Divinity Doctor of Divinity

1996	Mr. Charles F. Dolan Mrs. Helen Dolan Mr. John M. Boler Mrs. Mary Jo Boler Rev. Robert J. Welsh, S.J. Leon-Joseph Cardinal Suenens Mr. Garen N. Kelley	Doctor of Laws Doctor of Laws Doctor of Laws Doctor of Laws Doctor of Divinity Doctor of Divinity Bachelor of Arts
1997	Mr. John G. Breen Mrs. Mary Jane Breen Rev. Avery Dulles, S.J. Sister Hope Greener, C.S.J. Mr. Timothy J. Russert	Doctor of Laws Doctor of Laws Doctor of Divinity Doctor of Divinity Doctor of Laws
1998	Mr. John F. Donahue Mrs. Rhodora Jacob Donahue Sister Mary Rose McGeady, D.C. Mr. Edward M. Muldoon '48 Most Rev. John M. Smith, J.C.D., D.D.	Doctor of Divinity Doctor of Divinity Doctor of Divinity Doctor of Laws Doctor of Divinity
1999	Mr. Samuel H. Miller	Doctor of Laws
2000	Sr. Maureen Doyle, O.S.U. Mr. George B. Sweeney	Doctor of Humane Letters Doctor of Humane Letters
2001	Ms. Sara J. Bloomfield, M.A. '77 Ms. Barbara Byrd-Bennett	Doctor of Humane Letters Doctor of Humane Letters
2002	Dr. Leslie Lenkowsky Julie A. Zajac '02	Doctor of Humane Letters Bachelor of Sci. in Bus. Admin.
2003	Col. Carl E. Walz, M.S. '79 Msgr. William J. Linder Sonya Rendón Blacio Mary Patricia McTeague	Doctor of Science Doctor of Laws Doctor of Humane Letters Doctor of Humane Letters
2004	Rev. Gregory J. Boyle, S.J.	Doctor of Humane Letters
2005	Rev. Jim Wallis	Doctor of Humane Letters
2006	Sr. Mary Peter Traviss, O.P. William Cardinal Levada	Doctor of Human Service Doctor of Sacred Theology
2007	Sandra Pianalto Rev. Gerald O'Collins, S.J. Rev. John O'Malley, S.J. Rev. Jared Wicks, S.J.	Doctor of Laws Doctor of Humane Letters Doctor of Humane Letters Doctor of Humane Letters
2008	Martin J. Schreiber, M.D. '72	Doctor of Humane Letters

## COMMENCEMENT SPEAKERS

1954-2008

- |  |   |
|--|---|
| 1954 Mr. Thomas F. Patton<br>Assistant President and First Vice-President<br>Republic Steel Corporation              | 1968 Honorable Glenn T. Seaborg<br>Chairman<br>United States Atomic Energy Commission   |
| 1955 Mr. John A. Greene<br>President<br>Ohio Bell Telephone Company  | 1969 Honorable Edmund S. Muskie<br>United States Senator, Maine   |
| 1956 Honorable Paul Martin<br>Minister of National Health and Welfare<br>Ottawa, Canada                              | 1970 Reverend Robert J. Henle, S.J.<br>President<br>Georgetown University   |
| 1957 His Excellency Carlos P. Romulo<br>Ambassador of the Philippine Islands<br>of the United States                 | 1971 Mr. William H. Taft, III<br>Scientific Affairs Officer<br>United States Department of State  |
| 1958 Mr. Benjamin F. Fairless<br>President<br>Iron and Steel Institute   | 1972 Honorable Fred R. Harris<br>United States Senator, Oklahoma  |
| 1959 Honorable Frances Payne Bolton<br>United States Congresswoman, Ohio   | 1973 Mr. Donald F. Shula<br>Head Coach<br>Miami Dolphins Football Team  |
| 1960 Honorable Fred Andrew Seaton<br>Secretary of the Interior   | 1974 Honorable Lowell P. Weicker, Jr.<br>United States Senator, Connecticut   |
| 1961 Dr. John Allen Krout<br>Vice President and Provost<br>Columbia University                                       | 1975 Reverend Henry F. Birkenhauer, S.J.<br>President<br>John Carroll University  |
| 1962 Dr. Kurt von Schuschnigg<br>Former Chancellor of Austria<br>Professor of Political Science, Columbia University | 1976 Mr. Bob Hope   |
| 1963 Mr. James M. Roche<br>Executive Vice President<br>General Motors Corporation                                    | 1977 Most Reverend James A. Hickey<br>Bishop of Cleveland   |
| 1964 Mr. Kent H. Smith<br>Founder of the Lubrizol Corporation  | 1978 Mr. George H. Bush<br>Chairman, Executive Committee<br>First International Bank of Houston   |
| 1965 Very Reverend Hugh E. Dunn, S.J.<br>President<br>John Carroll University  | 1979 Dr. Robert J. White<br>Director of Neurological Surgery<br>Cleveland Metropolitan General Hospital<br>Co-Chairman of Department of Neurosurgery<br>Case Western Reserve University |
| 1966 Dr. Theodore August Distler<br>President<br>Commission for Independent Colleges and Universities                | 1980 Honorable Philip M. Crane<br>United States Congressman, Illinois   |
| 1967 Dr. Abe Silverstein<br>Director<br>NASA Lewis Research Center   | 1981 Vice Admiral James Bond Stockdale<br>Senior Research Fellow<br>Hoover Institution on War, Revolution, and Peace<br>Stanford University   |

- |   |  |
|---|--|
| 1982 Reverend John J. Powell, S.J.<br>Professor of Theology<br>Loyola University of Chicago                                     | 1996 Mr. Charles F. Dolan and Mrs. Helen Dolan<br>Chairman and C.E.O., Cablevision<br>Artist and civic leader                      |
| 1983 Ms. Erma Bombeck<br>Author and syndicated columnist  | 1997 Mr. Timothy J. Russert<br>Senior Vice President and Washington<br>Bureau Chief of NBC News                                    |
| 1984 Reverend William J. Byron, S.J.<br>President<br>The Catholic University of America   | 1998 Sr. Mary Rose McGeady, D.C.<br>President and Chief Executive Officer<br>Covenant House  |
| 1985 Honorable Mark O. Hatfield<br>United States Senator, Oregon  | 1999 Rev. Howard Gray, S.J.<br>Director of the Center for Ingatian Spirituality<br>Boston College                                  |
| 1986 Dr. John R. Powers<br>Author and playwright  | 2000 Sr. Maureen Doyle, O.S.U.<br>Director of the Urban Community School<br>Cleveland, Ohio  |
| 1987 Mr. John G. Breen, '56<br>Chairman and Chief Executive Officer<br>The Sherwin-Williams Company                             | 2001 Ms. Sara J. Bloomfield<br>Director of the United States Holocaust<br>Memorial Museum  |
| 1988 Very Reverend Howard J. Gray, S.J.<br>Provincial<br>Detroit Province, Society of Jesus                                     | 2002 Dr. Leslie Lenkowsky<br>CEO of the Corporation for National and<br>Community Service  |
| 1989 His Eminence Joseph Cardinal Bernadin<br>Archbishop of Chicago   | 2003 Col. Carl E. Walz, M.S. '79<br>NASA Astronaut   |
| 1990 Mr. Lawrence M. O'Rourke, J.D.<br>White House Correspondent for<br>The St. Louis Post-Dispatch                             | 2004 Rev. Gregory J. Boyle, S.J.<br>Founder and Director<br>Jobs for a Future/Homeboy Industries                                   |
| 1991 Mr. J. Joseph Whelan, M.A. '65<br>Fellow in Urban Education, JCU Education Dept.<br>National Distinguished Principal, 1988 | 2005 Rev. Jim Wallis<br>Founder of Sojourners and<br>Editor of <i>Sojourners</i> Magazine  |
| 1992 Most Rev. Rembert G. Weakland, O.S.B.<br>Archbishop of Milwaukee   | 2006 Sr. Mary Peter Traviss, O.P.<br>President, Queen of the Holy Rosary College<br>Professor Emerita, University of San Francisco |
| 1993 Dr. Bernadine P. Healy<br>Director of the National Institutes of Health  | 2007 Sandra Pianalto<br>President and Chief Executive Officer<br>Federal Reserve Bank of Cleveland                                 |
| 1994 Mr. John M. Boler<br>Chairman of the Board<br>The Boler Company  | 2008 Patrick Rombalski<br>Vice President for Student Affairs<br>John Carroll University  |
| 1995 Mr. Wayne R. Embry<br>President and COO<br>Cleveland Cavaliers   |  |



# **S T U D E N T S**

# **S T U D E N T S**

ENROLLMENT DATA, FALL SEMESTER, 2008 (END OF WEEK 1)  
(Used for IPEDS Reporting)

HEAD COUNT - FALL, 2008	MEN	WOMEN	TOTAL
College of Arts and Sciences (UG)			
Full-time students	1,265	1,394	2,659
Part-time students	25	32	57
Subtotal	1,290	1,426	2,716
Non-degree students (UG)			
Full-time students	3	0	3
Part-time students	19	14	33
Subtotal	22	14	36
School of Business (UG)			
Full-time students	208	145	353
Part-time students	7	5	12
Subtotal	215	150	365
Graduate Programs			
Full-time students	72	157	229
Part-time students	181	299	480
Subtotal	253	456	709
UNIVERSITY - TOTAL	1,780 (47%)	2,046 (53%)	3,826

HEAD COUNT	FALL, 2008	FALL, 2007	% CHANGE
College of Arts and Sciences (UG)	2,716	2,696	0.7%
Non-degree Students (UG)	36	53	-32.1%
School of Business (UG)	365	326	12.0%
Graduate Programs	709	691	2.6%
Total	3,826	3,766	1.6%

CREDIT HOURS	FALL, 2008	FALL, 2007	% CHANGE
College of Arts and Sciences (UG)	42,392	42,127	0.6%
Non-degree Students (UG)	151	230	-34.3%
School of Business (UG)	5,716	5,187	10.2%
Graduate Programs	4,449	4,406	1.0%
Total	52,708	51,950	1.5%

FULL-TIME EQUIVALENT STUDENTS	FALL, 2008	FALL, 2007	% CHANGE
Undergraduate	3,217	3,171	1.5%
Graduate	494	490	0.8%
Total	3,711	3,661	1.4%

Source: Office of Institutional Research

## Enrollment Statistics by Gender and Race/Ethnicity - Fall 2008 (End of Week 1)

FALL 2008		Non-Resident Alien		African American		Amer Indian/Alask Native		Asian or Pacific Isl		Hispanic		White Non-Hispanic		Other or Unknown		Total # of Students			Total # of Students	Total # of Min.	% Min. Enr.
		M	F	M	F	M	F	M	F	M	F	M	F	M	F	M	F				
<b>Undergrad by College/School</b>																					
A & S	FT	0	0	77	96	5	3	22	32	36	41	992	1091	133	131	1265	1394		2659	312	11.7%
	PT	0	0	1	4	0	1	0	1	0	0	22	25	2	1	25	32		57	7	12.3%
TOTAL		0	0	78	100	5	4	22	33	36	41	1014	1116	135	132	1290	1426		2716	319	11.7%
Non-Deg	FT	0	0	0	0	0	0	0	0	0	0	0	0	3	0	3	0		3	0	0.0%
	PT	0	0	0	1	0	0	0	0	1	1	3	2	15	10	19	14		33	3	9.1%
TOTAL		0	0	0	1	0	0	0	0	1	1	3	2	18	10	22	14		36	3	8.3%
BUS	FT	0	0	3	3	0	0	5	4	3	2	184	122	13	14	208	145		353	20	5.7%
	PT	0	0	0	1	0	0	0	0	0	0	7	4	0	0	7	5		12	1	8.3%
TOTAL		0	0	3	4	0	0	5	4	3	2	191	126	13	14	215	150		365	21	5.8%
<b>TOTAL UG</b>	FT	0	0	80	99	5	3	27	36	39	43	1176	1213	149	145	1476	1539		3015	332	11.0%
	PT	0	0	1	6	0	1	0	1	1	1	32	31	17	11	51	51		102	11	10.8%
TOTAL		0	0	81	105	5	4	27	37	40	44	1208	1244	166	156	1527	1590		3117	343	11.0%
<b>Graduate by College/School</b>																					
A & S	FT	0	0	1	13	0	0	2	1	2	2	38	111	3	13	46	140		186	21	11.3%
	PT	0	0	8	34	0	1	0	2	2	5	86	174	9	36	105	252		357	52	14.6%
TOTAL		0	0	9	47	0	1	2	3	4	7	124	285	12	49	151	392		543	73	13.4%
BUS	FT	1	0	1	0	0	0	0	1	2	0	18	15	4	1	26	17		43	5	11.6%
	PT	0	0	0	0	0	0	1	1	0	1	53	37	22	8	76	47		123	3	2.4%
TOTAL		1	0	1	0	0	0	1	2	2	1	71	52	26	9	102	64		166	8	4.8%
<b>TOTAL GR</b>	FT	1	0	2	13	0	0	2	2	4	2	56	126	7	14	72	157		229	26	11.4%
	PT	0	0	8	34	0	1	1	3	2	6	139	211	31	44	181	299		480	55	11.5%
TOTAL		1	0	10	47	0	1	3	5	6	8	195	337	38	58	253	456		709	81	11.4%
<b>UNIVERSITY</b>	FT	1	0	82	112	5	3	29	38	43	45	1232	1339	156	159	1548	1696		3244	358	11.0%
	PT	0	0	9	40	0	2	1	4	3	7	171	242	48	55	232	350		582	66	11.3%
TOTAL		1	0	91	152	5	5	30	42	46	52	1403	1581	204	214	1780	2046		3826	424	11.1%
<b>FRESHMEN</b>																					
First-time, Full-time		0	0	24	20	1	0	7	8	16	14	293	308	58	43	399	393		792	90	11.4%

SOURCE: Office of Institutional Research

(End of Week 1 data used for IPEDS reporting.)

## MINORITY ENROLLMENT STATISTICS, 1999 - 2008

UNDERGRADUATE ENROLLMENT									
Fall Semester	African American	Asian or Pac. Isl.	Hispanic	Other Minorities	White	Other or Unknown	Total # of Students	Total # of Minorities	% Minorities
1999	3.8%	2.8%	1.8%	0.3%	88.8%	2.6%	3527	304	8.6%
2000	4.6%	2.9%	2.2%	0.3%	87.3%	2.7%	3525	351	10.0%
2001	4.4%	2.8%	2.3%	0.2%	87.5%	2.7%	3508	341	9.7%
2002	4.3%	2.3%	2.5%	0.2%	87.6%	3.2%	3466	320	9.2%
2003	3.8%	2.2%	2.9%	0.3%	87.9%	3.0%	3449	315	9.1%
2004	3.7%	2.3%	2.9%	0.1%	87.0%	4.0%	3350	303	9.0%
2005	4.1%	2.1%	2.2%	0.1%	85.1%	6.3%	3313	284	8.6%
2006	4.0%	2.1%	2.4%	0.1%	85.2%	6.2%	3111	267	8.6%
2007	5.1%	2.0%	2.5%	0.3%	83.0%	7.1%	3075	304	9.9%
2008	6.0%	2.1%	2.7%	0.3%	78.7%	10.3%	3117	343	11.0%

GRADUATE ENROLLMENT									
Fall Semester	African American	Asian or Pac. Isl.	Hispanic	Other Minorities	White	Other or Unknown	Total # of Students	Total # of Minorities	% Minorities
1999	11.3%	1.2%	0.7%	1.6%	78.7%	6.6%	862	127	14.7%
2000	9.1%	1.0%	1.0%	1.2%	80.8%	6.9%	859	106	12.3%
2001	6.9%	1.4%	1.0%	0.8%	82.7%	7.2%	793	80	10.1%
2002	7.4%	0.7%	0.7%	1.0%	81.8%	8.5%	828	81	9.8%
2003	7.4%	1.0%	0.6%	1.4%	80.3%	9.2%	793	83	10.5%
2004	7.7%	1.1%	0.9%	1.6%	76.4%	12.3%	751	85	11.3%
2005	7.5%	1.6%	1.1%	1.3%	75.0%	13.5%	696	80	11.5%
2006	7.1%	0.6%	1.3%	0.7%	74.0%	16.4%	715	69	9.7%
2007	6.2%	1.0%	1.4%	0.3%	75.5%	15.5%	691	62	9.0%
2008	8.0%	1.1%	2.0%	0.3%	75.0%	13.5%	709	81	11.4%

TOTAL UNIVERSITY ENROLLMENT									
Fall Semester	African American	Asian or Pac. Isl.	Hispanic	Other Minorities	White	Other or Unknown	Total # of Students	Total # of Minorities	% Minorities
1999	5.2%	2.4%	1.6%	0.5%	86.8%	3.3%	4389	431	9.8%
2000	5.5%	2.5%	2.0%	0.5%	86.1%	3.5%	4384	457	10.4%
2001	4.8%	2.5%	2.1%	0.3%	86.7%	3.6%	4301	421	9.8%
2002	4.9%	2.0%	2.2%	0.3%	86.4%	4.2%	4294	401	9.3%
2003	4.5%	2.0%	2.5%	0.5%	86.5%	4.1%	4242	398	9.4%
2004	4.4%	2.1%	2.5%	0.4%	85.1%	5.5%	4101	388	9.5%
2005	4.7%	2.0%	2.0%	0.3%	83.3%	7.6%	4009	364	9.1%
2006	4.5%	1.8%	2.2%	0.2%	83.1%	8.1%	3826	336	8.8%
2007	5.3%	1.8%	2.3%	0.3%	81.6%	8.7%	3766	366	9.7%
2008	6.4%	1.9%	2.6%	0.3%	78.0%	10.9%	3826	424	11.1%

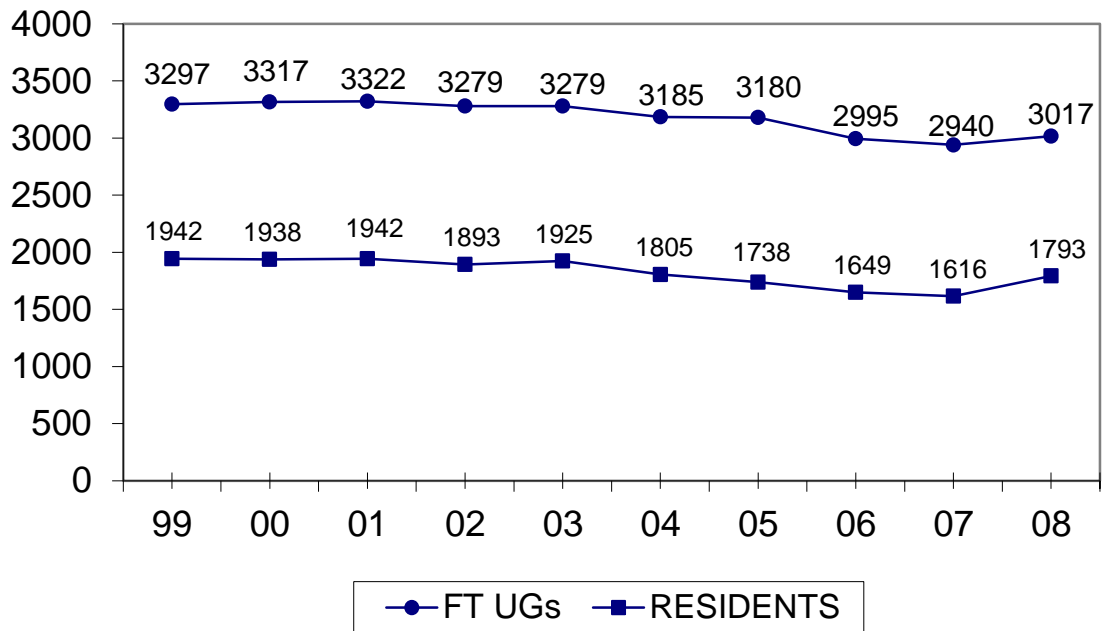
FRESHMAN (First-time, Full-time) ENROLLMENT									
Fall Semester	African American	Asian or Pac. Isl.	Hispanic	Other Minorities	White	Other or Unknown	Total # of Students	Total # of Minorities	% Minorities
1999	3.2%	2.8%	2.0%	0.1%	89.3%	2.0%	834	68	8.2%
2000	3.0%	2.4%	3.4%	0.2%	89.0%	2.0%	833	75	9.0%
2001	3.2%	2.3%	3.2%	0.1%	89.4%	1.9%	792	69	8.7%
2002	3.8%	1.3%	2.7%	0.1%	90.3%	1.8%	843	67	7.9%
2003	3.8%	2.6%	2.7%	0.0%	88.0%	2.9%	859	78	9.1%
2004	3.5%	2.2%	2.7%	0.0%	87.3%	4.2%	734	62	8.4%
2005	3.7%	2.9%	2.3%	0.1%	84.4%	6.9%	786	69	8.8%
2006	4.2%	1.4%	2.8%	0.1%	84.4%	7.0%	712	61	8.6%
2007	5.6%	1.5%	3.9%	0.6%	79.2%	9.3%	720	83	11.5%
2008	5.6%	1.9%	3.8%	0.1%	75.9%	12.8%	792	90	11.4%

## ENROLLMENT STATISTICS (END OF THIRD WEEK)

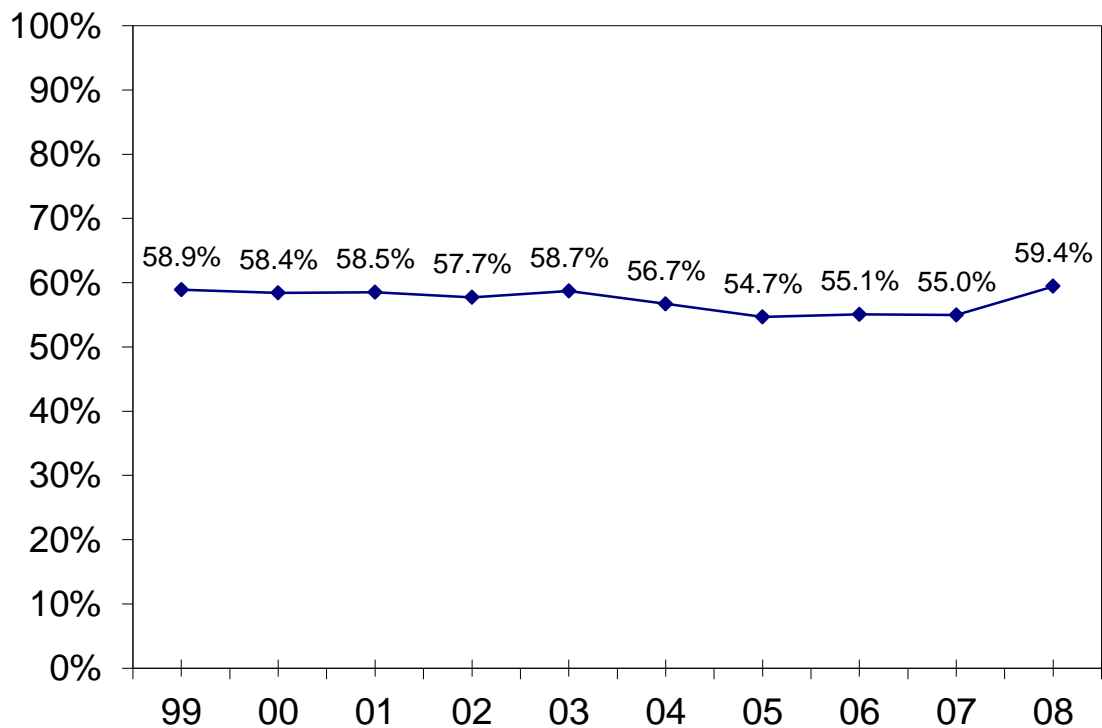
	1999	2000	2001	2002	2003	2004	2005	2006	2007	2008
<hr/> MEN										
Undergrad Full-Time	1,565	1,541	1,515	1,486	1,510	1,473	1,494	1,410	1,435	1,478
Undergrad Part-Time	97	86	75	81	85	87	68	60	66	50
Graduate Full-Time	64	56	64	58	63	64	63	62	66	74
Graduate Part-Time	274	254	236	233	220	201	184	177	181	180
TOTAL MEN	2,000	1,937	1,890	1,858	1,878	1,826	1,809	1,709	1,748	1,782
% OF TOTAL	45%	44%	44%	43%	44%	44%	45%	45%	46%	47%
<hr/> WOMEN										
Undergrad Full-Time	1,732	1,776	1,807	1,793	1,769	1,712	1,686	1,585	1,505	1,539
Undergrad Part-Time	125	110	107	107	84	84	68	64	66	49
Graduate Full-Time	155	150	136	124	132	126	120	120	155	155
Graduate Part-Time	385	407	359	411	379	364	337	340	297	300
TOTAL WOMEN	2,397	2,443	2,409	2,435	2,364	2,286	2,211	2,109	2,023	2,043
% OF TOTAL	55%	56%	56%	57%	56%	56%	55%	55%	54%	53%
<hr/> TOTALS										
Undergrad Full-Time	3,297	3,317	3,322	3,279	3,279	3,185	3,180	2,995	2,940	3,017
Undergrad Part-Time	222	196	182	188	169	171	136	124	132	99
Graduate Full-Time	219	206	200	182	195	190	183	182	221	229
Graduate Part-Time	659	661	595	644	599	565	521	517	478	480
TOTAL HEAD COUNT	4,397	4,380	4,299	4,293	4,242	4,111	4,020	3,818	3,771	3,825
<hr/>										
Undergrad FT Equiv.	3,609	3,621	3,619	3,566	3,566	3,449	3,403	3,211	3,158	3,208
Graduate FT Equiv.	609	595	561	540	534	502	463	468	493	495
TOTAL FT EQUIV.	4,218	4,216	4,180	4,106	4,100	3,951	3,866	3,679	3,651	3,703
<hr/>										

SOURCE: Office of Institutional Research

## CAMPUS RESIDENCE 1999 - 2008



## RESIDENTS AS % OF FT UGs

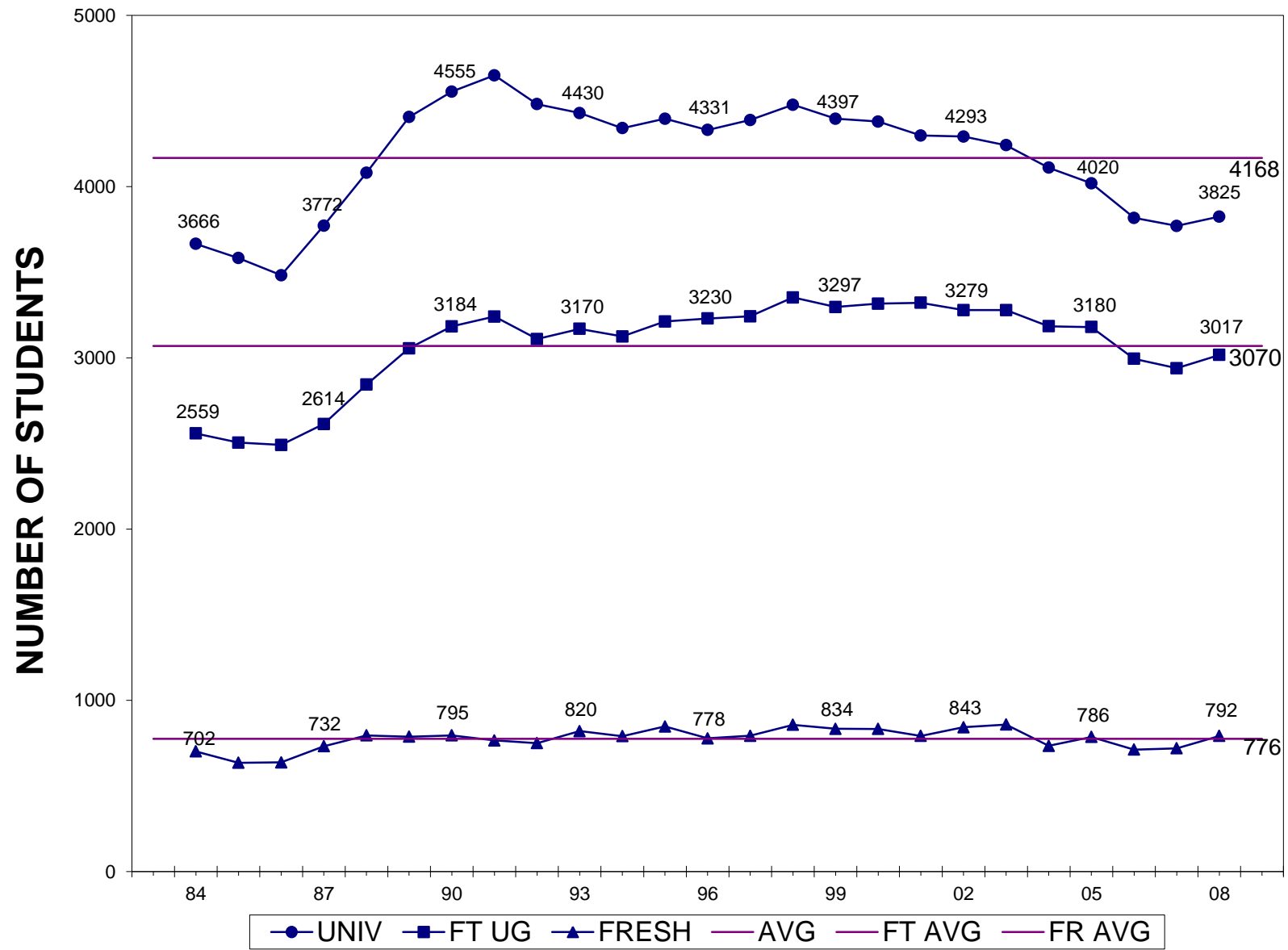


25 YEAR ENROLLMENT HISTORY - FALL SEMESTER HEAD COUNTS  
(End of 3rd week)

YEAR	TOTAL UNIVERSITY	FULL-TIME UNDERGRAD	NEW FRESHMEN
1984	3666	2559	702
1985	3583	2505	635
1986	3483	2492	638
1987	3772	2614	732
1988	4081	2844	795
1989	4407	3056	788
1990	4555	3184	795
1991	4650	3241	766
1992	4482	3110	750
1993	4430	3170	820
1994	4342	3125	791
1995	4397	3213	847
1996	4331	3230	778
1997	4389	3243	793
1998	4478	3353	857
1999	4397	3297	834
2000	4380	3317	833
2001	4299	3322	792
2002	4293	3279	843
2003	4242	3279	859
2004	4111	3185	734
2005	4020	3180	786
2006	3818	2995	712
2007	3771	2940	720
2008	3825	3017	792
25 YEAR AVG.	4168	3070	776



# FALL SEMESTER HEADCOUNTS 1984 - 2008



ENROLLMENT STATISTICS BY CLASS LEVEL  
Fall Semester (End of 3rd week)

	1999	2000	2001	2002	2003	2004	2005	2006	2007	2008
Arts and Sciences										
Freshmen	878	883	839	868	897	821	849	780	784	858
Sophomores	884	840	828	805	826	844	721	738	728	744
Juniors	611	607	592	630	611	619	669	552	577	528
Seniors	624	615	608	604	610	600	594	660	595	577
Totals	2,997	2,945	2,867	2,907	2,944	2,884	2,833	2,730	2,684	2,707
 Boler School of Business										
Juniors	186	228	222	163	159	177	137	118	119	138
Seniors	247	283	334	302	264	244	262	232	214	231
Totals	433	511	556	465	423	421	399	350	333	369
 Non-Degree	89	57	81	95	81	51	84	39	55	40
 Graduate Programs										
Arts and Sciences										541
Boler School of Business										168
Totals	878	867	795	826	794	755	704	699	699	709
<b>TOTAL</b>	<b>4,397</b>	<b>4,380</b>	<b>4,299</b>	<b>4,293</b>	<b>4,242</b>	<b>4,111</b>	<b>4,020</b>	<b>3,818</b>	<b>3,771</b>	<b>3,825</b>

Source: Office of Institutional Research

ENROLLMENT STATISTICS BY CLASS LEVEL  
Spring Semester (End of 3rd week)

	1999	2000	2001	2002	2003	2004	2005	2006	2007	2008
Arts and Sciences										
Freshmen	783	753	744	708	755	777	638	659	651	639
Sophomores	736	766	725	718	656	697	753	602	632	652
Juniors	518	564	559	532	576	538	554	609	524	498
Seniors	805	727	739	754	735	761	711	730	772	704
Totals	2,842	2,810	2,767	2,712	2,722	2,773	2,656	2,600	2,579	2,493
 Boler School of Business										
Juniors	142	154	186	158	128	160	136	116	90	91
Seniors	323	313	352	388	343	309	303	309	271	260
Totals	465	467	538	546	471	469	439	425	361	351
 Non-Degree	98	74	54	85	84	72	32	31	38	40
 Graduate School	855	888	842	807	758	793	703	664	647	676
 <b>TOTAL</b>	<b>4,260</b>	<b>4,239</b>	<b>4,201</b>	<b>4,150</b>	<b>4,035</b>	<b>4,107</b>	<b>3,830</b>	<b>3,720</b>	<b>3,625</b>	<b>3,560</b>

Source: Office of Institutional Research

CREDIT HOURS BY DEPARTMENT  
Fall Semester (End of 3rd week)

	1999	2000	2001	2002	2003	2004	2005	2006	2007	2008
Accountancy	2,013	2,061	2,106	1,815	1,758	1,831	1,743	1,722	1,662	1,722
Art History & Humanities	1,119	936	939	954	942	949	1,038	1,039	1,013	1,086
Biology	1,963	1,987	2,024	2,042	2,290	2,236	2,269	2,306	2,517	2,627
Chemistry	1,674	1,596	1,452	1,637	1,792	1,807	1,814	1,701	1,808	1,823
CI & Mod Lang & Cultures	3,893	3,552	3,498	3,725	3,607	3,417	3,752	3,454	3,539	3,815
Comm. & Theatre Arts	3,993	3,976	3,935	3,973	4,000	3,916	3,566	3,350	3,224	3,311
Community Counseling	574	481	462	309	441	390	475	486	438	399
Economics & Finance	4,035	3,984	3,924	3,849	3,732	3,472	3,528	3,117	3,281	3,520
Education & Allied Studies	5,501	5,625	5,911	5,486	5,229	4,727	3,871	3,675	3,920	3,819
English	5,426	5,444	5,250	5,107	4,850	4,847	4,688	4,449	4,312	4,439
History	2,262	2,227	2,079	2,151	2,262	2,319	2,205	2,152	2,112	2,013
Mgmt, Mktg & Logistics	5,465	6,096	6,546	5,896	5,497	5,134	4,837	4,776	4,829	4,742
Math & Computer Science	3,929	3,506	3,532	3,750	3,811	3,499	3,523	3,284	2,768	2,565
Military Science	113	127	105	118	98	124	76	55	90	67
Philosophy	3,959	3,909	4,010	3,907	3,931	4,041	3,825	3,952	3,849	3,750
Physics	873	934	920	946	1,119	985	964	842	808	719
Political Science	1,669	1,755	1,592	1,646	1,677	1,715	1,902	1,815	1,375	1,617
Psychology	2,791	2,931	2,896	2,830	2,919	2,885	2,862	2,743	2,672	2,604
Religious Studies	2,913	3,117	3,046	3,100	2,991	2,917	2,913	2,640	2,542	2,766
Sociology	2,512	2,527	2,193	2,106	2,196	2,135	2,094	1,979	1,985	1,980
Other	2,940	2,893	2,917	3,003	3,151	2,952	3,212	2,837	3,037	3,185
<b>TOTAL</b>	<b>59,617</b>	<b>59,664</b>	<b>59,337</b>	<b>58,350</b>	<b>58,293</b>	<b>56,298</b>	<b>55,157</b>	<b>52,374</b>	<b>51,781</b>	<b>52,569</b>

Source: Office of Institutional Research

CREDIT HOURS BY DEPARTMENT  
Spring Semester (End of 3rd week)

	1999	2000	2001	2002	2003	2004	2005	2006	2007	2008
Accountancy	1,539	1,602	1,587	1,665	1,467	1,419	1,299	1,206	1,411	1,428
Art History & Humanities	1,099	1,156	877	1,137	1,082	1,080	1,005	1,096	1,180	971
Biology	2,038	1,820	1,948	1,936	1,883	2,187	2,078	1,954	1,946	2,018
Chemistry	1,458	1,470	1,469	1,345	1,516	1,728	1,665	1,552	1,657	1,621
Cl & Mod Lang & Cultures	3,281	3,294	3,182	3,172	3,180	3,106	2,869	3,218	3,382	2,986
Comm. & Theatre Arts	4,173	4,204	4,325	4,356	4,254	4,319	3,727	3,558	3,508	3,452
Community Counseling	566	594	516	456	363	448	468	452	481	498
Economics & Finance	3,999	3,927	3,768	3,444	3,474	3,216	3,046	3,104	2,970	3,255
Education & Allied Studies	5,989	5,813	6,219	6,199	5,865	5,644	5,028	4,492	3,811	4,208
English	5,223	5,188	4,959	4,761	4,773	4,544	4,263	4,551	4,303	4,220
History	2,139	2,295	2,197	2,289	2,211	2,559	2,271	2,481	2,028	2,082
Mgmt, Mktg & Logistics	5,915	6,075	6,489	6,647	5,968	5,530	5,200	5,035	4,839	4,836
Math & Computer Science	3,494	3,114	3,093	2,979	2,805	3,078	2,556	2,671	2,628	2,269
Military Science	97	98	115	75	108	104	96	68	49	92
Philosophy	3,840	4,045	4,157	4,038	3,828	4,028	4,041	3,802	3,769	3,642
Physics	863	916	915	865	870	902	827	991	807	988
Political Science	1,691	1,543	1,672	1,662	1,731	1,846	1,753	1,830	1,839	1,415
Psychology	2,791	2,837	3,030	2,978	3,107	3,171	2,573	2,933	2,977	2,793
Religious Studies	3,243	3,112	3,027	2,853	2,805	3,022	2,487	2,766	2,901	2,524
Sociology	2,608	2,518	2,374	2,246	2,236	2,240	1,989	2,140	2,263	2,135
Other	447	435	440	642	663	1,076	1,073	783	842	1,034
<b>TOTAL</b>	<b>56,493</b>	<b>56,056</b>	<b>56,359</b>	<b>55,745</b>	<b>54,189</b>	<b>55,247</b>	<b>50,314</b>	<b>50,683</b>	<b>49,591</b>	<b>48,467</b>

Source: Office of Institutional Research

SEATS OCCUPIED BY DEPARTMENT  
Fall Semester (End of 3rd week)

	1999	2000	2001	2002	2003	2004	2005	2006	2007	2008
Accountancy	671	687	702	605	586	611	581	574	554	574
Art History & Humanities	388	332	344	341	342	339	364	365	355	374
Biology	903	883	935	916	1,207	1,187	1,035	1,020	964	1,216
Chemistry	747	708	645	732	799	847	810	748	776	813
CI & Mod Lang & Cultures	1,301	1,188	1,170	1,247	1,203	1,142	1,252	1,154	1,179	1,272
Comm. & Theatre Arts	1,518	1,514	1,488	1,493	1,525	1,478	1,368	1,287	1,248	1,269
Community Counseling	186	149	144	95	140	127	152	156	141	125
Economics & Finance	1,345	1,328	1,308	1,283	1,248	1,160	1,176	1,039	1,096	1,196
Education & Allied Studies	2,155	2,166	2,157	2,103	2,040	1,772	1,531	1,482	1,512	1,499
English	1,792	1,790	1,720	1,676	1,593	1,595	1,543	1,462	1,418	1,452
History	753	741	693	717	754	772	735	727	706	674
Mgmt, Mktg & Logistics	1,925	2,160	2,263	2,049	1,912	1,784	1,686	1,669	1,881	2,040
Math & Computer Science	1,154	1,078	1,077	1,155	1,151	1,082	1,097	1,008	870	842
Military Science	111	126	107	114	96	124	76	62	54	70
Philosophy	1,320	1,303	1,337	1,303	1,312	1,347	1,275	1,318	1,283	1,250
Physics	408	444	443	462	541	475	463	406	402	359
Political Science	558	587	540	553	560	575	634	606	459	539
Psychology	1,015	1,049	1,053	1,017	1,050	1,021	1,058	1,017	892	962
Religious Studies	985	1,049	1,033	1,048	1,002	985	986	890	848	922
Sociology	848	861	731	702	732	712	698	660	657	666
Other	1,113	1,071	1,145	1,156	1,181	1,108	1,147	1,040	1,077	1,201
<b>TOTAL</b>	<b>21,196</b>	<b>21,214</b>	<b>21,035</b>	<b>20,767</b>	<b>20,974</b>	<b>20,243</b>	<b>19,667</b>	<b>18,690</b>	<b>18,372</b>	<b>19,315</b>

Source: Office of Institutional Research

SEATS OCCUPIED BY DEPARTMENT  
Spring Semester (End of 3rd week)

	1999	2000	2001	2002	2003	2004	2005	2006	2007	2008
Accountancy	482	534	529	555	489	473	433	402	471	476
Art History & Humanities	401	414	317	418	393	386	351	383	412	333
Biology	908	784	881	860	843	976	923	859	854	880
Chemistry	656	655	650	622	689	782	785	705	747	797
CI & Mod Lang & Cultures	1,095	1,098	1,068	1,062	1,064	1,044	959	1,074	1,130	995
Comm. & Theatre Arts	1,586	1,574	1,627	1,611	1,584	1,616	1,399	1,356	1,325	1,298
Community Counseling	164	189	158	133	111	138	141	133	142	153
Economics & Finance	1,333	1,309	1,256	1,148	1,158	1,072	1,016	1,040	990	1,085
Education & Allied Studies	2,214	2,229	2,349	2,205	2,049	2,072	1,845	1,645	1,450	1,587
English	1,741	1,726	1,653	1,586	1,591	1,512	1,420	1,523	1,435	1,408
History	711	761	731	761	737	850	756	826	676	694
Mgmt, Mktg & Logistics	2,060	2,163	2,280	2,294	2,071	1,920	1,799	1,742	1,713	1,967
Math & Computer Science	1,125	992	1,042	1,021	948	1,028	882	887	884	748
Military Science	94	98	114	74	108	102	95	69	53	85
Philosophy	1,280	1,349	1,386	1,347	1,276	1,343	1,347	1,268	1,257	1,214
Physics	374	415	426	408	415	422	405	479	391	476
Political Science	578	515	558	557	578	638	602	642	657	494
Psychology	1,013	1,021	1,080	1,080	1,119	1,152	932	1,087	1,117	1,024
Religious Studies	1,081	1,038	1,011	951	935	1,008	828	922	967	842
Sociology	862	832	789	746	740	744	659	707	750	718
Other	258	230	228	392	392	436	476	407	359	425
<b>TOTAL</b>	<b>20,016</b>	<b>19,926</b>	<b>20,133</b>	<b>19,831</b>	<b>19,290</b>	<b>19,714</b>	<b>18,053</b>	<b>18,156</b>	<b>17,780</b>	<b>17,699</b>

Source: Office of Institutional Research

## SUMMER SESSION ENROLLMENT

## HEAD COUNTS BY DIVISION

	FIRST SESSION *			SECOND SESSION **			THIRD SESSION		
	Undergrad	Grad	Total	Undergrad	Grad	Total	Undergrad	Grad	Total
1999	288	232	520	296	524	820	279	275	554
2000	385	276	661	367	567	934	180	341	521
2001	327	324	651	338	615	953	222	256	478
2002	316	330	646	290	560	850	213	282	495
2003	275	270	545	206	583	789	160	223	383
2004	256	235	491	218	508	726	133	173	306
2005	231	284	515	240	479	719	129	196	325
2006	259	201	460	302	471	773	127	222	349
2007	297	312	609	314	457	771	129	265	394
2008	334	282	616	268	522	790	131	270	401

## CREDIT HOURS BY DIVISION

	FIRST SESSION *			SECOND SESSION **			THIRD SESSION		
	Undergrad	Grad	Total	Undergrad	Grad	Total	Undergrad	Grad	Total
1999	1129	625	1754	1121	1866	2987	1033	870	1903
2000	1564	889	2453	1423	2183	3606	645	1127	1772
2001	1351	1109	2460	1272	2484	3756	781	923	1704
2002	1353	979	2332	1107	2296	3403	759	1082	1841
2003	1097	926	2023	830	2244	3074	537	904	1441
2004	1092	827	1919	877	1963	2840	462	746	1208
2005	1010	1011	2021	961	1937	2898	440	718	1158
2006	1092	695	1787	1170	1822	2992	461	811	1272
2007	1212	1003	2215	1257	1858	3115	476	1027	1503
2008	1373	984	2357	1064	2034	3098	470	948	1418

\* Includes Sessions 1 and A

\*\* Includes Sessions 2 and B



## Religious Affiliation Statistics, 2004-2008

	<u>2004</u>	<u>2005</u>	<u>2006</u>	<u>2007</u>	<u>2008</u>
<b>FT Degree Seeking UG</b>	<b>3184</b>	<b>3163</b>	<b>3001</b>	<b>2945</b>	<b>3012</b>
Buddhist	----	----	----	0.2%	0.2%
Hindu	----	----	----	0.1%	0.1%
Jewish	0.9%	0.8%	0.8%	0.9%	0.9%
Muslim	0.1%	0.2%	0.3%	0.4%	0.5%
Orthodox Christian	----	----	----	----	0.7%
Protestant/Christian	11.4%	12.5%	13.1%	15.0%	14.5%
Eastern Rite Catholic	----	----	----	----	0.2%
Roman Catholic	72.1%	71.3%	69.4%	68.1%	65.0%
Other	2.8%	2.3%	2.6%	2.3%	3.4%
Undeclared	12.6%	12.9%	13.8%	13.1%	14.5%
<b>All UG Students</b>	<b>3350</b>	<b>3313</b>	<b>3129</b>	<b>3075</b>	<b>3117</b>
Buddhist	----	----	----	0.2%	0.2%
Hindu	----	----	----	0.1%	0.1%
Jewish	1.0%	0.8%	0.8%	0.9%	0.9%
Muslim	0.1%	0.2%	0.3%	0.4%	0.5%
Orthodox Christian	----	----	----	----	0.6%
Protestant/Christian	11.5%	12.3%	13.2%	14.7%	14.3%
Eastern Rite Catholic	----	----	----	----	0.2%
Roman Catholic	70.8%	69.8%	68.0%	66.8%	64.2%
Other	3.0%	2.4%	2.7%	2.3%	3.5%
Undeclared	13.6%	14.4%	15.0%	14.7%	15.4%
<b>Graduate Students</b>	<b>751</b>	<b>696</b>	<b>697</b>	<b>691</b>	<b>709</b>
Buddhist	----	----	----	0.0%	0.0%
Hindu	----	----	----	0.0%	0.0%
Jewish	2.1%	1.0%	1.3%	1.2%	1.0%
Muslim	0.0%	0.0%	0.0%	0.0%	0.0%
Orthodox Christian	----	----	----	----	----
Protestant/Christian	6.1%	3.6%	3.4%	3.9%	4.1%
Eastern Rite Catholic	----	----	----	----	----
Roman Catholic	28.5%	24.6%	23.7%	25.6%	25.8%
Other	7.1%	4.9%	3.2%	2.2%	1.4%
Undeclared	56.2%	65.9%	68.4%	67.1%	67.7%
<b>Total All Students</b>	<b>4101</b>	<b>4009</b>	<b>3826</b>	<b>3766</b>	<b>3826</b>
Buddhist	----	----	----	0.1%	0.2%
Hindu	----	----	----	0.1%	0.1%
Jewish	1.2%	0.9%	0.9%	0.9%	0.9%
Muslim	0.1%	0.2%	0.2%	0.3%	0.4%
Orthodox Christian	----	----	----	----	0.5%
Protestant/Christian	10.5%	10.8%	11.3%	12.7%	13.0%
Eastern Rite Catholic	----	----	----	----	0.2%
Roman Catholic	63.1%	62.0%	60.0%	59.4%	57.3%
Other	3.7%	2.8%	2.8%	2.3%	3.2%
Undeclared	21.4%	23.3%	24.8%	24.2%	24.9%

Source: Institutional Research

## **The Center for Career Services**

The Center for Career Services focuses on the career development of JCU students, while also providing services to alumni. Who am I? What am I good at? Where is that needed in the world? How do I get there? The process of answering these questions is career development. The Center for Career Services has a wide variety of resources to work with students and alumni to discover their own unique answers.

Several Career Education Courses are offered for students in relation to those four questions. Courses are 1-credit hour.

### **CE-111: Exploring Your Options**

- Freshmen and Sophomores – last 7 weeks of the semester.
- Students that are undecided on a major and/or career field will explore their interests, values personality and skills in relation to academic options available to them.

### **CE-101: Introduction to Careers**

- Examination of self in relation to the world of work in terms of values, skills, and interests.
- Exploration of occupational paths for all majors, examination of employer employee expectations.
- Introduction to job search strategies, preparation of resumes, development of interviewing skills.

### **CE-121: Introduction to the Accounting Profession**

- Sophomores and Juniors with the intention of majoring in Accountancy.
- Introduction to the opportunities available in the accounting profession and the requirements of the accountancy major.
- Preparation for the junior-year internship.

### **CE-131: Introduction to the World of Work**

- Juniors and Seniors only.
- Prepare for the transition from college to career after graduation.
- Learn effective job search strategies, how to negotiate job offers, how to get experience before graduation, and financial planning for the new graduate.
- Students will evaluate their marketable skills and experience, conduct research on a career field, interview a professional in their chosen field and participate in a mock interview or career advising session.

There are also Academic Internship courses: CE 199, 102, 103, and 104. These courses can be taken for 0-3 credits. For more information on the Academic Internship courses, see the undergraduate catalog or the Center's website, [www.jcu.edu/careercenter](http://www.jcu.edu/careercenter).

The Center for Career Services also provides resources for students and alumni to connect with employers. There are career fairs (the Annual JCU Career Fair; the Virtual Jesuit Career Fair, and the Post-Graduate Volunteer Fair, co-sponsored by Campus Ministry and the Office of Service and Social Action), on campus interviews with employers for entry level positions and internships, and the online Career Connection system. Career Connection houses job postings, the Carroll Contact database (alumni and other friends of JCU serving as career mentors/networking contacts), and other on and off campus event listings.

## Class of 2007 First Destination Survey Results (44% response rate)

98% of your graduates have full-time careers:  
 29% are in full-time graduate programs  
 63% are employed full-time  
 6% are fulfilling a year of service commitment

Employer States	Top Job Titles	Salary Information (FT and PT)		Top Graduate Schools
		Class of 2007 median salary range is \$35,000-\$39,999.		
Arizona	Account Executive			Boston College
California	Accountant			Case Western Reserve University
Colorado	Analyst	Major	Salary Range	Cleveland State University
Connecticut	Associate	Accountancy	\$35,000 - \$39,999	John Carroll University
District of Columbia	Audit Associate	Biology	\$25,000 - \$29,999	Kent State University
Florida	Credit Analyst	Business Information	\$30,000 - \$34,999	The Ohio State University
Georgia	Financial Analyst	Bus. Logistics	\$35,000 - \$39,999	Univ. of Akron
Illinois	General Manager	Chemistry	\$35,000 - \$39,999	Univ. of Notre Dame
Indiana	Graduate Assistant	Classical Languages	\$35,000 - \$39,999	Univ. of Toledo Col. of Medicine
Iowa	HR Associate	Communication	\$60,000 - \$34,999	
Maryland	Intern	Computer Science	\$50,000 - \$54,999	
Massachusetts	Investment Analyst	Economics	\$40,000 - \$44,999	
Michigan	Manager	Education	\$35,000 - \$39,999	
Missouri	Marketing Coordinator	English	\$30,000 - \$34,999	
Nevada	Medical Student	Finance	\$35,000 - \$39,999	
New Hampshire	Project Coordinator	History	\$30,000 - \$34,999	
New York	Research Technician	Management	\$35,000 - \$39,999	
North Carolina	Sales Associate	Marketing	\$35,000 - \$39,999	
Ohio	Second Lieutenant	Mathematics	\$35,000 - \$39,999	
Oregon	Staff Accountant	Philosophy	\$35,000 - \$39,999	
Pennsylvania	Supervisor	Political Science	\$30,000 - \$34,999	
Tennessee	Teacher	Psychology	\$35,000 - \$39,999	
Utah	Veteran Service Representative	Religious Studies	\$20,000 - \$24,999	
Virginia		Sociology	\$30,000 - \$34,999	

## GRADUATES BY MAJOR/PROGRAM

	1999	2000	2001	2002	2003	2004	2005	2006	2007	2008
<b>COLLEGE OF ARTS AND SCIENCES</b>										
Bachelor of Arts & BA (Classics)										
Art History & Humanities	7	11	9	4	2	9	3	4	8	6
Classical & Modern Languages	20	17	18	10	20	16	14	20	17	22
Communications	99	89	104	98	100	105	111	91	86	77
Economics	11	15	12	3	6	5	6	4	9	3
Education (licensure)	0	0	0	43	83	67	72	65	37	46
Elementary Education	69	47	59	36	5	0	0	0	0	0
English	88	60	52	49	50	46	42	33	41	37
History	33	41	34	23	29	35	29	36	41	30
Mathematics Teaching	2	5	2	4	3	1	6	3	4	3
Philosophy	20	20	17	11	16	14	17	7	15	12
Physical Education	7	3	10	7	14	16	8	14	8	16
Physics	0	0	1	1	0	0	0	0	0	1
Political Science	31	24	30	28	30	32	27	43	60	29
Religious Studies	4	9	8	4	4	1	1	2	4	2
Sociology	46	34	27	26	30	25	27	34	30	32
Self-Designed	0	0	0	0	0	0	1	0	1	1
<b>Total BA &amp; BAC Majors</b>	<b>437</b>	<b>375</b>	<b>383</b>	<b>369</b>	<b>392</b>	<b>372</b>	<b>364</b>	<b>356</b>	<b>361</b>	<b>317</b>
<b>Total BA &amp; BAC Degrees</b>	<b>399</b>	<b>347</b>	<b>358</b>	<b>347</b>	<b>366</b>	<b>346</b>	<b>341</b>	<b>339</b>	<b>338</b>	<b>293</b>
Bachelor of Science										
Biology	79	53	72	56	50	63	71	65	82	50
Chemistry	22	16	15	14	31	16	20	29	24	23
Computer Information Systems	0	0	0	0	1	0	0	2	4	2
Computer Science	17	10	8	17	11	14	10	7	3	6
Mathematics	11	9	3	8	9	11	8	7	14	10
Physics & Engineering Physics	4	4	6	7	6	3	5	7	7	8
Psychology	77	67	56	62	56	71	54	46	67	82
Self-Designed	0	0	1	0	0	0	0	0	0	0
<b>Total BS Majors</b>	<b>210</b>	<b>159</b>	<b>161</b>	<b>171</b>	<b>164</b>	<b>178</b>	<b>168</b>	<b>163</b>	<b>201</b>	<b>181</b>
<b>Total BS Degrees</b>	<b>202</b>	<b>154</b>	<b>156</b>	<b>164</b>	<b>156</b>	<b>172</b>	<b>163</b>	<b>158</b>	<b>197</b>	<b>176</b>
<b>TOTAL ARTS &amp; SCIENCES MAJORS</b>	<b>647</b>	<b>534</b>	<b>544</b>	<b>540</b>	<b>556</b>	<b>550</b>	<b>532</b>	<b>519</b>	<b>562</b>	<b>498</b>
<b>TOTAL ARTS &amp; SCIENCES DEGREES</b>	<b>601</b>	<b>501</b>	<b>514</b>	<b>511</b>	<b>522</b>	<b>518</b>	<b>504</b>	<b>497</b>	<b>535</b>	<b>469</b>

## GRADUATES BY MAJOR/PROGRAM

	1999	2000	2001	2002	2003	2004	2005	2006	2007	2008
<b>BOLER SCHOOL OF BUSINESS</b>										
Bachelor of Science in Business Administration										
Accounting	56	37	41	59	51	42	54	54	49	44
Business Information Systems	0	0	0	0	0	7	5	5	6	1
Business Logistics	30	26	28	11	22	20	15	14	14	18
Finance	51	54	53	49	59	45	52	64	39	31
Management	42	55	52	81	69	63	56	33	44	41
Marketing	73	51	69	74	65	66	62	68	66	65
<b>Total BSBA Majors</b>	<b>252</b>	<b>223</b>	<b>243</b>	<b>299</b>	<b>266</b>	<b>243</b>	<b>244</b>	<b>238</b>	<b>218</b>	<b>200</b>
<b>Total BSBA Degrees</b>	<b>221</b>	<b>201</b>	<b>217</b>	<b>274</b>	<b>240</b>	<b>216</b>	<b>222</b>	<b>226</b>	<b>205</b>	<b>182</b>
Bachelor of Science in Economics	12	5	5	7	15	20	7	12	12	15
<b>Total BSE Majors</b>	<b>12</b>	<b>5</b>	<b>5</b>	<b>9</b>	<b>15</b>	<b>20</b>	<b>7</b>	<b>12</b>	<b>12</b>	<b>15</b>
<b>Total BSE Degrees</b>	<b>9</b>	<b>5</b>	<b>5</b>	<b>7</b>	<b>14</b>	<b>17</b>	<b>6</b>	<b>11</b>	<b>11</b>	<b>12</b>
<b>TOTAL BOLER SCHOOL OF BUSINESS MAJORS</b>	<b>264</b>	<b>228</b>	<b>248</b>	<b>308</b>	<b>281</b>	<b>263</b>	<b>251</b>	<b>250</b>	<b>230</b>	<b>215</b>
<b>TOTAL BOLER SCHOOL OF BUSINESS DEGREES</b>	<b>230</b>	<b>206</b>	<b>222</b>	<b>281</b>	<b>254</b>	<b>233</b>	<b>228</b>	<b>237</b>	<b>216</b>	<b>194</b>
<b>TOTAL UNDERGRADUATE MAJORS</b>	<b>911</b>	<b>762</b>	<b>792</b>	<b>848</b>	<b>837</b>	<b>813</b>	<b>783</b>	<b>769</b>	<b>792</b>	<b>713</b>
<b>TOTAL UNDERGRADUATE DEGREES</b>	<b>831</b>	<b>707</b>	<b>736</b>	<b>792</b>	<b>776</b>	<b>751</b>	<b>732</b>	<b>734</b>	<b>751</b>	<b>663</b>

Notes: Numbers for majors also include double majors; so the total of majors/programs will exceed the total number of students graduated.  
Reporting period for each year runs from the previous fall semester through summer. For example, "2008" included graduates from Winter 2007, Spring 2008, and Summer 2008.

## GRADUATES BY MAJOR/PROGRAM

	1999	2000	2001	2002	2003	2004	2005	2006	2007	2008
<b>GRADUATE DEGREES</b>										
Master of Arts										
Biology	1	2	0	1	1	3	0	1	1	2
Classical Languages	0	1	0	0	0	1	0	0	0	0
Communications Management	0	1	1	0	0	6	8	8	8	10
Community Counseling	13	15	24	22	18	18	16	26	24	20
Counseling and Human Services	14	13	2	1	0	3	0	0	0	0
Educational Psychology	0	1	0	0	0	0	0	0	0	0
English	12	6	7	6	5	9	7	13	7	10
History	1	1	6	1	0	2	5	7	3	7
Humanities	4	7	6	11	1	10	5	7	11	8
Integrated Science	0	0	0	0	0	0	13	14	13	6
Mathematics	3	1	1	3	1	3	18	10	18	16
Religious Studies	2	2	6	7	3	6	9	13	7	5
<b>Total MA Degrees</b>	<b>50</b>	<b>50</b>	<b>53</b>	<b>52</b>	<b>29</b>	<b>61</b>	<b>81</b>	<b>99</b>	<b>92</b>	<b>84</b>
<b>Master of Business Administration</b>	<b>47</b>	<b>57</b>	<b>82</b>	<b>88</b>	<b>91</b>	<b>85</b>	<b>62</b>	<b>72</b>	<b>54</b>	<b>32</b>
Master of Education										
Administration	0	0	0	0	0	3	12	18	9	13
Administration-Supervision	16	16	27	7	10	11	0	0	0	0
Education Licensure	0	0	0	0	0	0	1	1	0	0
Education Psychology	0	3	0	3	1	1	2	1	3	0
Guidance & Counseling	9	7	10	9	1	0	0	0	0	0
Professional Teacher	25	23	37	39	21	24	17	15	4	23
School Based	57	48	45	55	53	43	27	23	12	32
School Counseling	0	0	0	0	8	3	14	17	13	15
School Psychology	5	9	7	3	5	9	8	8	5	7
<b>Total MEd Degrees</b>	<b>112</b>	<b>106</b>	<b>126</b>	<b>116</b>	<b>99</b>	<b>94</b>	<b>81</b>	<b>83</b>	<b>46</b>	<b>90</b>
Master of Science										
Accountancy	0	0	0	0	0	0	1	4	1	2
Biology	6	6	8	7	4	3	2	8	2	6
Chemistry	0	2	1	1	0	1	0	1	0	0
Mathematics	2	4	1	0	2	3	1	6	1	3
Physics	2	3	1	2	0	3	0	2	1	0
<b>Total MS Degrees</b>	<b>10</b>	<b>15</b>	<b>11</b>	<b>10</b>	<b>6</b>	<b>10</b>	<b>4</b>	<b>21</b>	<b>5</b>	<b>11</b>
<b>TOTAL GRADUATE SCHOOL DEGREES</b>	<b>219</b>	<b>228</b>	<b>272</b>	<b>266</b>	<b>225</b>	<b>250</b>	<b>228</b>	<b>275</b>	<b>197</b>	<b>217</b>
<b>TOTAL MAJORS/PROGRAMS WINTER, SPRING AND SUMMER</b>	<b>1130</b>	<b>990</b>	<b>1064</b>	<b>1114</b>	<b>1062</b>	<b>1063</b>	<b>1011</b>	<b>1044</b>	<b>989</b>	<b>930</b>
<b>TOTAL GRADUATES WINTER, SPRING AND SUMMER</b>	<b>1050</b>	<b>935</b>	<b>1008</b>	<b>1058</b>	<b>1001</b>	<b>1001</b>	<b>960</b>	<b>1009</b>	<b>948</b>	<b>880</b>

Notes: Numbers for majors also include double majors; so the total of majors/programs will exceed the total number of students graduated.  
Reporting period for each year runs from the previous fall semester through summer. For example, "2008" included graduates from Winter 2007, Spring 2008, and Summer 2008.

**RETENTION AND GRADUATION RATES  
FOR FIRST-TIME, FULL-TIME FRESHMEN**

ENTRY YEAR	NUMBER ENTERED	RETENTION RATE			CUMULATIVE GRADUATION RATE		
		1 YEAR	2 YEAR	3 YEAR*	4 YEAR	5 YEAR	6 YEAR
1986	632	83.5%	73.6%	72.9%	53.2%	69.3%	71.0%
1987	729	86.0%	75.4%	74.2%	59.3%	72.2%	73.8%
1988	790	87.6%	78.6%	77.2%	63.2%	75.4%	76.1%
1989	783	87.5%	77.7%	76.0%	62.1%	73.2%	74.3%
1990	791	87.2%	79.3%	77.6%	64.6%	75.6%	76.9%
1991	765	82.9%	73.9%	72.0%	60.8%	71.2%	71.6%
1992	747	87.1%	76.0%	75.0%	60.6%	73.1%	74.0%
1993	814	83.5%	76.0%	74.6%	59.8%	71.4%	72.5%
1994	786	86.8%	77.1%	76.2%	61.6%	73.8%	74.4%
1995	844	88.3%	80.3%	81.2%	69.5%	79.4%	80.7%
1996	773	87.2%	78.3%	76.8%	62.5%	73.9%	75.0%
1997	790	85.6%	79.2%	78.1%	62.7%	73.5%	76.2%
1998	853	87.9%	79.0%	78.4%	62.3%	74.4%	75.5%
1999	833	84.3%	77.4%	76.1%	64.7%	73.3%	74.2%
2000	828	85.6%	77.7%	77.8%	65.2%	74.4%	75.4%
2001	789	85.4%	77.4%	75.4%	65.1%	72.5%	73.6%
2002	842	88.2%	81.7%	80.2%	77.4%	81.0%	81.6%
2003	857	86.9%	79.1%	78.1%	63.4%	73.5%	
2004	734	85.1%	76.2%	75.3%	63.6%		
2005	786	81.3%	74.8%	73.5%			
2006	712	84.3%	78.9%				
2007	720	89.6%					

\* 3 year retention rate includes students who graduated in three years or less

Source: Office of Institutional Research

## FULL-TIME UNDERGRADUATE EXPENSES

2008-2009 Academic Year

	Resident	Commuter
Tuition (Flat Rate)	\$27,190	\$27,190
Room and Board	7,934	-----
Books and Supplies	1,200	1,200
Personal Expenses	1,000	1,000
At Home Living Expenses	-----	3,000
Transportation	800	1,600
Activity Fee	400	400
Student Health Services Fee	150	150
Technology Fee	350	350
<b>TOTAL</b>	<b>\$39,024</b>	<b>\$34,890</b>

## ROOM AND BOARD CHARGES

1982-2009

Academic Year	\$/Semester	Increase over Previous Year
1982-83	1,125	12.5%
1983-84	1,250	11.1%
1984-85	1,375	10.0%
1985-86	1,550	12.7%
1986-87	1,687.50	8.9%
1987-88	1,825	8.1%
1988-89	1,937.50	6.2%
1989-90	2,115	9.2%
1990-91	2,350	11.1%
1991-92	2,525	7.4%
1992-93	2,725	7.9%
1993-94	2,725	0.0%
1994-95	2,775	1.8%
1995-96	2,775	0.0%
1996-97	2,775	0.0%
1997-98	2,831	2.0%
1998-99	2,902	2.5%
1999-00	2,975	2.5%
2000-01	3,064	3.0%
2001-02	3,156	3.0%
2002-03	3,282	4.0%
2003-04	3,446	5.0%
2004-05	3,618	5.0%
2005-06	3,763	4.0%
2006-07	3,895	3.5%
2007-08	3,895	0.0%
2008-09	3,967	1.8%

Source: Office of Institutional Research



## TUITION AND FEES PER CONTACT HOUR

1982-2009							
Academic Year	UNDERGRADUATE TUITION		GRADUATE A&S TUITION		GRADUATE BSOB TUITION		All Levels Mandatory Fees
	\$/Hour	Increase over Previous Year	\$/Hour	Increase over Previous Year	\$/Hour	Increase over Previous Year	\$/Hour
1982-83	124	11.7%	136	11.5%	145	14.2%	0
1983-84	136	9.7%	150	10.3%	165	13.8%	0
1984-85	149	9.6%	164	9.3%	181	9.7%	0
1985-86	167	12.1%	183	11.6%	205	13.3%	0
1986-87	182	9.0%	199	8.7%	230	12.2%	0
1987-88	197	8.2%	215	8.0%	255	10.9%	0
1988-89	212	4.6%	230	7.0%	280	9.8%	0
1989-90	232	9.4%	251	9.1%	310	10.7%	0
1990-91	266	14.7%	277	10.4%	355	14.5%	0
1991-92*	290	9.0%	300	8.3%	390	9.9%	0
1992-93*	315	8.6%	325	8.3%	425	9.0%	0
1993-94*	334	6.0%	344	5.8%	450	5.9%	0
1994-95	353	5.7%	363	5.5%	475	5.6%	0
1995-96	374	5.9%	384	5.8%	500	5.3%	0
1996-97	396	5.9%	405	5.5%	530	6.0%	0
1997-98	419	5.8%	428	5.7%	530	0.0%	0
1998-99	441	5.3%	450	5.1%	530	0.0%	0
1999-00	465	5.4%	471	4.7%	553	4.3%	0
2000-01	492	5.8%	498	5.7%	587	6.1%	0
2001-02	528	7.3%	533	7.0%	628	7.0%	10
2002-03	569	7.8%	550	3.2%	676	7.6%	10
2003-04	622	9.3%	600	9.1%	738	9.2%	0
2004-05	669	7.6%	645	7.5%	793	7.5%	0
2005-06	708	5.8%	645	-----	793	-----	0
2006-07	750	5.9%	645	-----	793	-----	0
2007-08	791	5.5%	645	-----	793	-----	0
2008-09	823	4.0%	658	2.0%	809	2.0%	0

\*Returning Full-Time Undergraduates

## FULL-TIME UNDERGRADUATE TUITION AND FEES - FLAT RATE

1991-2009			
Academic Year	Tuition \$/Sem.	Increase over Previous Year	Mandatory Fees \$/Sem.
1991-92	\$4,800	-----	0
1992-93	\$5,220	8.8%	0
1993-94	\$5,530	5.9%	0
1994-95	\$5,850	5.8%	0
1995-96	\$6,195	5.9%	0
1996-97	\$6,561	5.9%	0
1997-98	\$6,941.50	5.8%	0
1998-99	\$7,310	5.3%	25
1999-00	\$7,712	5.5%	25
2000-01	\$8,167	5.9%	25
2001-02	\$8,739	7.0%	175
2002-03	\$9,416	7.7%	175
2003-04	\$10,283	9.2%	100
2004-05	\$11,054	7.5%	100
2005-06	\$11,690	5.8%	125
2006-07	\$12,391	6.0%	145
2007-08	\$13,072	5.5%	145
2008-09	\$13,595	4.0%	450

Source: Office of Institutional Research

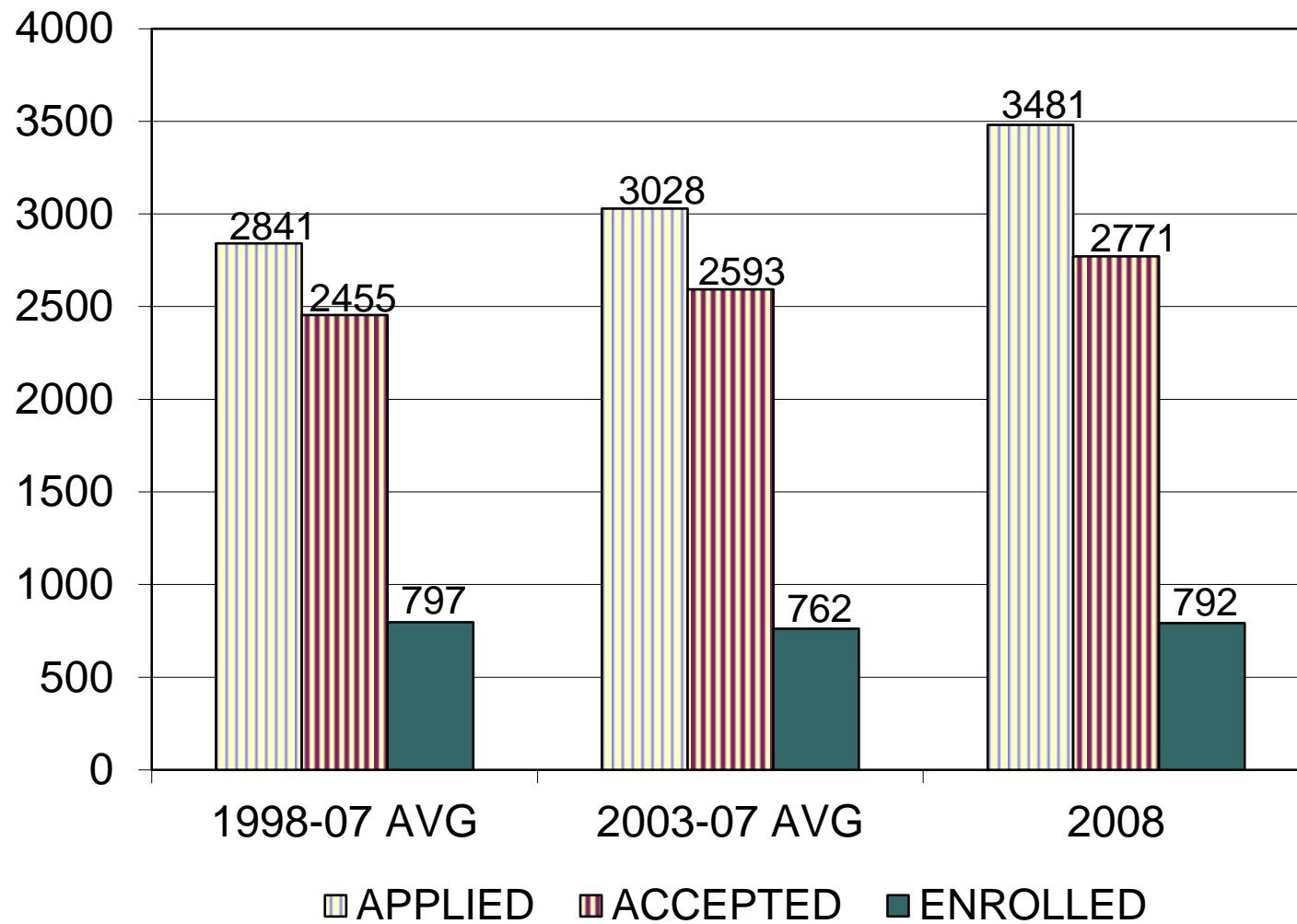
## APPLICATION AND ADMISSION STATISTICS

## MALES AND FEMALES

	1998	1999	2000	2001	2002	2003	2004	2005	2006	2007	2008
INQUIRIES	21,546	20,696	21,312	20,107	16,636	14,607	12,595	14,871	26,213	18,572	16,304
APPLICATIONS	2,486	2,612	2,667	2,764	2,734	2,802	2,761	3,057	3,213	3,309	3,481
ACCEPTED	2,203	2,295	2,319	2,387	2,375	2,440	2,445	2,604	2,648	2,830	2,771
ENROLLED	857	834	833	792	843	859	734	786	712	720	792
MALES											
APPLICATIONS	1,234	1,228	1,261	1,340	1,361	1,373	1,365	1,549	1,594	1,669	1,794
ACCEPTED	1,043	1,033	1,034	1,092	1,132	1,145	1,169	1,267	1,251	1,379	1,383
ENROLLED	421	382	363	349	387	406	351	385	327	362	399
FEMALES											
APPLICATIONS	1,252	1,384	1,406	1,424	1,373	1,429	1,396	1,508	1,619	1,640	1,687
ACCEPTED	1,160	1,262	1,285	1,295	1,243	1,295	1,276	1,337	1,397	1,451	1,388
ENROLLED	436	452	470	443	456	453	383	401	385	358	393

Source: Office of Admission

## ADMISSION STATS 5 AND 10 YEAR AVERAGES VS 2008



# PROFILE OF 2008 FRESHMAN CLASS

Freshman applications: 3,481

Freshman class size: 792 (50% male, 50% female)

## High School Rank (of those ranked)

Valedictorian	3.9%
Top 10%	19.6%
1st Quartile	49.7%
2nd Quartile	33.5%
3rd Quartile	14.3%
4th Quartile	2.5%

62% of the class comes from schools who use rankings.

	SAT Scores			ACT Composite Scores	
	Critical Reading	Math	Writing		
800-700	1.2%	2.2%	1.4%	36-31	3.7%
699-600	22.1%	21.2%	21.0%	30-25	31.2%
599-500	47.0%	48.5%	41.6%	24-21	44.1%
499-400	25.6%	24.7%	31.8%	20-16	20.3%
Below 400	4.1%	3.4%	4.2%	Below 16	0.7%

Average GPA: 3.34

## Middle 50% Ranges

SAT - Critical Reading	490-590
SAT - Math	490-600
SAT - Writing	480-590
ACT - Comp	21-26
ACT - EN	21-26
ACT - MT	20-26
ACT - Writing	21-26
GPA	3.00-3.725

Source: Office of Admission

## GEOGRAPHICAL ORIGIN OF FRESHMEN

		1999	2000	2001	2002	2003	2004	2005	2006	2007	2008
Geographic Area	\ Class Size	834	833	792	843	859	734	786	712	720	792
Northeastern Ohio		55%	51%	56%	51%	53%	54%	48%	46%	53.0%	47.7%
Elsewhere*		11%	12%	12%	10%	13%	7%	12%	12%	13.6%	14.9%
Buffalo/Rochester/Syracuse		5%	4%	2%	7%	6%	4%	7%	8%	9.6%	7.8%
Akron/Canton		4%	5%	4%	5%	5%	5%	4%	4%	2.6%	5.9%
Pittsburgh		8%	8%	7%	8%	8%	9%	7%	9%	7.5%	5.4%
Youngstown		5%	7%	5%	6%	4%	5%	6%	5%	3.5%	4.4%
Chicago		3%	3%	4%	3%	2%	4%	4%	5%	3.3%	3.3%
Columbus		2%	1%	2%	2%	3%	3%	3%	4%	2.5%	2.5%
Toledo		1%	1%	1%	1%	<1%	1%	1%	2%	<1%	2.4%
Erie		2%	4%	3%	3%	2%	2%	2%	2%	1.1%	1.9%
Detroit		1%	2%	1%	1%	1%	3%	3%	1%	1.1%	1.6%
Philadelphia/D.C./Baltimore		<1%	<1%	<1%	1%	1%	1%	1%	1%	1.5%	1.4%
Cincinnati/Dayton		2%	2%	2%	2%	2%	2%	2%	2%	<1%	<1%

\*includes students enrolling from areas outside the metropolitan areas listed above, as well as other states and countries

Source: Office of Admission

## MAJOR AREAS OF ACADEMIC INTEREST OF FRESHMEN

	1999	2000	2001	2002	2003	2004	2005	2006	2007	2008
Major Area of Study \ Class Size	834	833	792	843	859	734	786	712	720	792
Business	23%	21%	23%	23%	22%	23%	25%	26%	24%	25%
Science	12%	14%	13%	14%	16%	15%	13%	13%	16%	23%
Other and undeclared	4%	5%	4%	5%	4%	2%	4%	5%	4%	20%
Education	13%	11%	13%	11%	11%	9%	10%	9%	11%	7%
Humanities	5%	6%	5%	4%	5%	7%	8%	6%	7%	7%
Accounting	7%	7%	7%	5%	5%	7%	10%	9%	6%	6%
Social Science	6%	4%	5%	7%	7%	6%	3%	5%	9%	6%
Communications	10%	10%	10%	11%	8%	8%	10%	8%	8%	5%
Math & Computer Science	5%	6%	5%	5%	6%	5%	2%	3%	2%	1%
Engineering	1%	1%	1%	2%	<1%	1%	2%	1%	2%	0%
Pre-Law	4%	4%	4%	4%	4%	5%	2%	4%	3%	---
Pre-Med	11%	11%	10%	9%	13%	12%	11%	11%	8%	---

Source: Office of Admission

## COLLEGE ENTRANCE TEST SCORES OF FRESHMEN

SAT	1999	2000	2001	2002	2003	2004	2005	2006	2007	2008
NUMBER	412	370	320	420	433	305	330	303	499	503
CRITICAL READING (formerly VERBAL)	565	558	565	569	573	577	580	570	543	532
MATH AVG	569	569	575	572	576	579	581	578	544	539
WRITING AVG	-----	-----	-----	-----	-----	-----	-----	-----	539	530
ACT	1999	2000	2001	2002	2003	2004	2005	2006	2007	2008
NUMBER	420	462	472	423	426	426	456	407	539	621
COMP AVG	23.4	24.1	23.5	23.5	23.5	23.3	23.5	23.1	23.5	23.4
ENG AVG	23.1	23.8	23.1	23.1	23.1	22.8	23.2	22.7	23.2	23.3
MATH AVG	22.8	23.2	22.8	22.7	22.7	22.6	22.9	22.6	23.1	22.8
RDG AVG	24.3	25.0	24.3	24.2	24.2	24.3	24.1	23.7	24.2	24
SCIR AVG	23.1	23.7	23.1	23.2	23.1	23.0	23.1	22.7	23.2	23

\* Beginning in 2007, all test scores are included in averages; in prior years, only the "higher" score was used for students who took both the SAT and ACT.

Source: Office of Admission

## AVERAGE HIGH SCHOOL GPA, CLASS RANKS, AND NATIONAL MERIT SCHOLARS

	1999	2000	2001	2002	2003	2004	2005	2006	2007	2008
Number	834	833	792	843	859	734	786	712	720	792
Average GPA	3.27	3.31	3.27	3.30	3.30	3.29	3.47	3.45	3.34	3.34
Number of National Merit Scholars	10	8	5	1	4	2	3	5	NA	NA
Valedictorians (of those ranked)	4.1%	2.2%	2.1%	3.1%	3.8%	3.7%	4.1%	4.2%	1.8%	3.9%
Top 10% of High School Class	26.2%	25.1%	24.3%	25.7%	24.0%	27.1%	28.5%	26.6%	22.0%	19.6%

NA = Not available

Source: Office of Admission



## DISTRIBUTION BY HIGH SCHOOL TYPE IN FRESHMAN CLASS

	1999	2000	2001	2002	2003	2004	2005	2006	2007	2008
Number of Public High School Freshmen	460	417	417	435	447	366	424	379	387	288
Number of Catholic High School Freshmen	363	395	364	393	387	348	334	317	293	474
Freshmen From Other Private Schools	11	21	11	15	25	20	28	16	30	30
Freshmen Home-schooled or School Unknown	----	----	----	----	----	----	----	----	10	----
TOTAL FRESHMEN	834	833	792	843	859	734	786	712	720	792
Number of Schools Represented in Freshmen Class										
Catholic Schools	103	98	97	108	104	87	106	98	85	112
Public Schools	199	195	193	189	205	179	205	188	183	189
Private Schools	8	16	11	13	22	16	23	16	27	10
TOTAL SCHOOLS	310	309	301	310	331	282	334	294	296	311

Source: Office of Admission

## STUDENT UNION PRESIDENTS

1920-1921	Walter J. Keiwei	1961-1962	Thomas Fallon
	Vincent Heffernan	1962-1963	Charles T. Salem
1921-1922	Vincent Heffernan	1963-1964	James Bachmann
	James J. Corrigan	1964-1965	Richard J. Cermak
1922-1923	Aloysius Acker	1965-1966	Louis P. Vitullo
	Carl A. Turk	1966-1967	Thomas J. Murphy
1923-1924	John P. Rice	1967-1968	George P. Maloney, III
	William F. Creadon	1968-1969	George G. Mackey
1924-1925	William F. Creadon	1969-1970	James W. Laures
	Joseph T. Hodous	1970-1971	Frank Chenette
1925-1926	Joseph T. Hodous	1971-1972	Timothy J. Russert
	Franklin J. Joyce	1972-1973	John S. Kleshinski
1926-1927	George P. Hausser	1973-1974	Phillip A. Eichner
	Hubert J. McCaffery	1974-1975	James P. Eardly
1927-1928	Hubert J. McCaffery	1975-1976	Rob Cummings
	Jack Sheehan	1976-1977	Edward W. Rybka
1928-1929	Jack Mulcahy	1977-1978	Timothy Freeman
1929-1930	Nicholas Sheehan	1978-1979	Tracy Coyne
1930-1931	Paul Carmody	1979-1980	Terry Heneghan
1931-1932	Edmund Smolik	1980-1981	Robert Hill
1932-1933	William McCarthy	1981-1982	Edward Fay
1933-1934	Joseph Fegen	1982-1983	Christopher Miller
1934-1935	J. Robert McCarty	1983-1984	Timothy Cavanagh
1935-1936	Don Birmingham	1984-1985	David Pratt
1936-1937	William L. Peoples	1985-1986	Richard M. Gorman
1937-1938	Edward Rambousek	1986-1987	David Clifford
1938-1939	Philip Lawton	1987-1988	Peter Anthony
1939-1940	Bernard J. Petty	1988-1989	Matthew Caiazza
1940-1941	William D. Joyce	1989-1990	Gary Ritter
1941-1942	Robert Donnelly	1990-1991	David Averill
1942-1943	John V. Corrigan	1991-1992	Joseph Cimperman
1943-1944	Albert Francesconi	1992-1993	Kevin Biacsi
1944-1945	James L. Fullin	1993-1994	Philip J. Kangas
1945-1946	John McCafferty	1994-1995	John J. Cranley, IV
1946-1947	Leonard Schneeberger	1995-1996	John J. Cranley, IV
1947-1948	John J. Kilbane	1996-1997	Doralice Tavolario
1948-1949	Joseph DeGrandis	1997-1998	Christopher J. Beato
1949-1950	James Conway	1998-1999	Kevin R. Filiatraut
1950-1951	Richard Cusick	1999-2000	Melanie A. Shakarian
1951-1952	John Beringer	2000-2001	Patrick J. Corrigan
1952-1953	John Beringer	2001-2002	Tara A. Brucato
1953-1954	Dave Schuler	2002-2003	Kerry A. Lynch
1954-1955	Kevin McDonough	2003	Allison R. Bower
1955-1956	Frank Tesch	2004	Sarah Wagner
1956-1957	Richard Murphy	2005	Daniel O'Malley
1957-1958	Partick Doherty	2006	Daniel O'Malley
1958-1959	J. Peter Fegen	2007	Andrew C. Costigan
1959-1960	James Shannon	2008	Molly L. Delaney
1960-1961	Kailish Bagaria		

## THE BEAUDRY AWARD

1951-2008

For four years the Sodality at John Carroll had given an award to the student who had done the most for the University during that year. At the fifth annual Sodality dance in 1951 the award was changed in two ways. It was henceforth to be called the "Robert Beaudry Man of the Year Award" to commemorate the deceased Sodalist's memory. Also, in the future only seniors were to be eligible as recipients.

The Beaudry Award is now given each year at graduation to the young man or woman voted most deserving of the honor by fellow students. As in the past, the award recognizes outstanding service in the three areas of Christian leadership, academic achievement, and contributions to the university community.

1951	Lawrence Badar	1980	David T. Kusner
1952	Jerome Miller	1981	Laura C. Lanza
1953	Thomas Dugan	1982	Mary Kay Merk
1954	Nicholas DiCaprio	1983	Margaret Mary Mahon
1955	George Sweeney	1984	Peter Anthony Francel
1956	Raymond Reilly	1985	Marie Elizabeth Mozzi
1957	Charles Novak	1986	Michael R. Anderson
1958	Gerald Porter	1987	Mary Theresa Kesicki
1959	J. Peter Fegen	1988	Brian Edward Stiltner
1960	Gerald Schweickert	1989	James Kevin Kenny
1961	Edward Parks	1990	Brian Keith Adams
1962	John C. Wanamaker	1991	Margret K. Langdon
1963	Gary J. Previts	1992	Joseph Cimperman
1964	James Bachmann	1993	Anne Marie Tirpak
1965	Christopher Zegers	1994	Kevin Joseph Biasci
1966	R. John Fox	1995	J. Patrick Klus
1967	Richard Tomc	1996	Jason Carroll McMinn
1968	Philip Giancinti	1997	Timothy Michael Hanchin
1969	George Mackey	1998	Grant Mast
1970	Donald Brown	1999	Meghan C. Rogers
1971	James H. Grendell	2000	Melanie Ann Shakarian
1972	Timothy Russert	2001	Trena Anne Marks
1973	Elias Naffah	2002	Eric Paul Schild
1974	M. Terence Dwyer	2003	Edward Joseph Giles IV
1975	Lou DeMarco	2004	Peter Vincent Range
1976	Mary Jo Casserly	2005	Sarah Louise Wagner
1977	Patrick M. Cummings	2006	Douglas Adam Phillips
1978	Ara Bagdasarian	2007	Erin Elizabeth Grzegorzewski
1979	Maureen T. Rose	2008	Patrick Carpenter

MILLOR ORATOR  
1977 - 2008

In honor of the late Rev. William J. Millor, S.J., who served the university in a variety of posts over 28 years, the officers of the Senior Class each year since 1977 designate a member of the graduating class to make a presentation at the annual spring commencement.

1977	Bill J. Gagliano
1978	John Gregory Schufreider
1979	Richard Michael Farrell
1980	Mark Stephen Summers
1981	David Wright Short
1982	Mary Alice Courtney O'Brien
1983	Lisa Ann Garono
1984	Thomas Anthony Guarente
1985	Lawrence Robert Blum
1986	Michael Joseph Galeano
1987	John Barber Heasley
1988	Thomas Peter Giordano
1989	Beth Ann Senay
1990	Julianne Trichtinger
1991	David D. Poplar
1992	Peter Gregory Pappas
1993	Fred Lamarr Saxton
1994	Anthony Theodore Parker
1995	Rose Anne Abood
1996	Megan Ann Mooney
1997	Bishoy Mikhail Edward Mikhail
1998	Steven Robert Colaianne
1999	Richard Ryan Daly
2000	Thomas Carl Franzinger
2001	Julie Ann Schwing
2002	Holly Ann Bugos
2003	Elizabeth Rose Krymski
2004	Michael Patrick Glasenapp
2005	Connor Edward Mullin
2006	Cyril Nicholas Pinchak
2007	Daniel Joseph O'Malley
2008	Thomas Gregory Haren

Source: Office of Institutional Research

**F  
A  
C  
U  
L  
T  
Y**

# FACULTY

FACULTY  
SEPTEMBER 2008

DEPARTMENT	FULL-TIME	GA	PART-TIME	TOTAL
Accountancy	6	1	6	13
Art History and Humanities	3	0	6	9
Biology	9	13	7	29
Chemistry	9 (1 OL)	0	1	10
Class & Mod Lang & Cultures	17 (1 OL)	0	11	28
Communications & Theatre Arts	13 (2 OL)	3	16	32
Economics & Finance	12	1	12	25
Education & Allied Studies	19.5	6	36	61.5
English	17 (3 OL)	11	16	44
History	9 (1 OL)	2	6	17
Mngmt., Marketing, & Logistics	16 (1 OL)	3	15	34
Mathematics & Comp. Science	13.5	7	4	24.5
Military Science	3	0	0	3
Philosophy	13 (2 OL)	0	5	18
Physics	6 (1 OL)	0	2	8
Political Science	7	0	4	11
Psychology	11 (1 OL)	0	7	18
Religious Studies	10	4	9	23
Sociology	8	0	7	15
Grasselli Library	8	0	0	8
Interdisciplinary	0	0	5	5
Athletic Interns		10		10
Center for Career Services		1		1
College of Arts and Sciences		1		1
Community Counseling		1		1
Graduate Studies		1		1
Institute of Humanities		1		1
Non-Profit Administration		1		1
Planning & Assessment		1		1
School of Business		2		2
Student Affairs/Dean's Office		4		4
University Counseling		1		1
TOTALS	<u>210</u> *	<u>75</u> **	<u>175</u> ***	<u>460</u>

\*Comprised of: 124 Laymen; 79 Laywomen; 6 Jesuits; 1 Sister

\*\*Comprised of: 29 Laymen; 46 Laywomen

\*\*\*Comprised of: 87 Laymen; 87 Laywomen; 1 Rabbi

TEACHING FACULTY  
FULL-TIME EQUIVALENTS

1978	211.8
1979	207.4
1980	213.5
1981	215.4
1982	217.1
1983	211.5
1984	215.0
1985	216.5
1986	205.1
1987	209.8
1988	221.5
1989	229.5
1990	233.0
1991	246.7
1992	247.5
1993	249.0
1994	258.8
1995	258.7
1996	256.2
1997	258.1
1998	265.8
1999	268.8
2000	266.4
2001	280.5
2002	279.5
2003	278.1
2004	274.7
2005	257.2
2006	256.8
2007	256.5
2008	251.1

Source: Office of Institutional Research



## TEACHING PERSONNEL \*

FALL	FULL-TIME FACULTY			PART-TIME LECTURERS			GRADUATE ASSISTANTS			TOTAL
	Lay	Priests	Total	Lay	Priests	Total	Lay	Priests	Total	
	Religious			Religious			Religious			
1978	154	18	172	66	0	66	40	0	40	278
1979	152	20	172	61	1	62	34	0	34	268
1980	158	21	179	62	3	65	30	0	30	274
1981	154	24	178	66	2	68	34	0	34	280
1982	156	22	178	66	1	67	38	0	38	283
1983	164	19	183	71	5	76	27	0	27	286
1984	170	14	184	70	6	76	37	1	38	298
1985	170	19	189	71	3	74	37	1	38	301
1986	165	17	182	50	3	53	41	0	41	276
1987	175	12	187	60	4	64	53	0	53	304
1988	187	11	198	69	1	70	62	0	62	330
1989	188	13	201	96	6	102	58	0	58	361
1990	192	12	204	111	4	115	60	0	60	379
1991	201	12	213	106	4	110	65	1	66	389
1992	205	12	217	112	12	124	67	1	68	409
1993	207	8	215	119	12	131	65	1	66	412
1994	212	10	222	127	7	134	63	0	63	419
1995	217	12	229	151	6	157	67	0	67	453
1996	218	12	230	143	8	151	64	0	64	445
1997	217	9	226	159	7	166	65	0	65	457
1998	222	12	234	172	8	180	68	0	68	482
1999	222	12	234	169	7	176	70	1	71	481
2000	228	10	238	157	7	164	65	0	65	467
2001	237	9	246	164	7	171	67	0	67	484
2002	241	9	250	145	2	147	77	0	77	474
2003	235	9	244	165	2	167	78	0	78	489
2004	231	9	240	168	1	169	71	0	71	480
2005	224	7	231	165	4	169	74	0	74	474
2006	208	7	215	159	3	162	69	0	69	446
2007	206	7	213	186	3	189	75	0	75	477
2008	203	7	210	174	1	175	75	0	75	460

\*Excluding administrators holding faculty status or rank

Source: Academic Vice President's Office

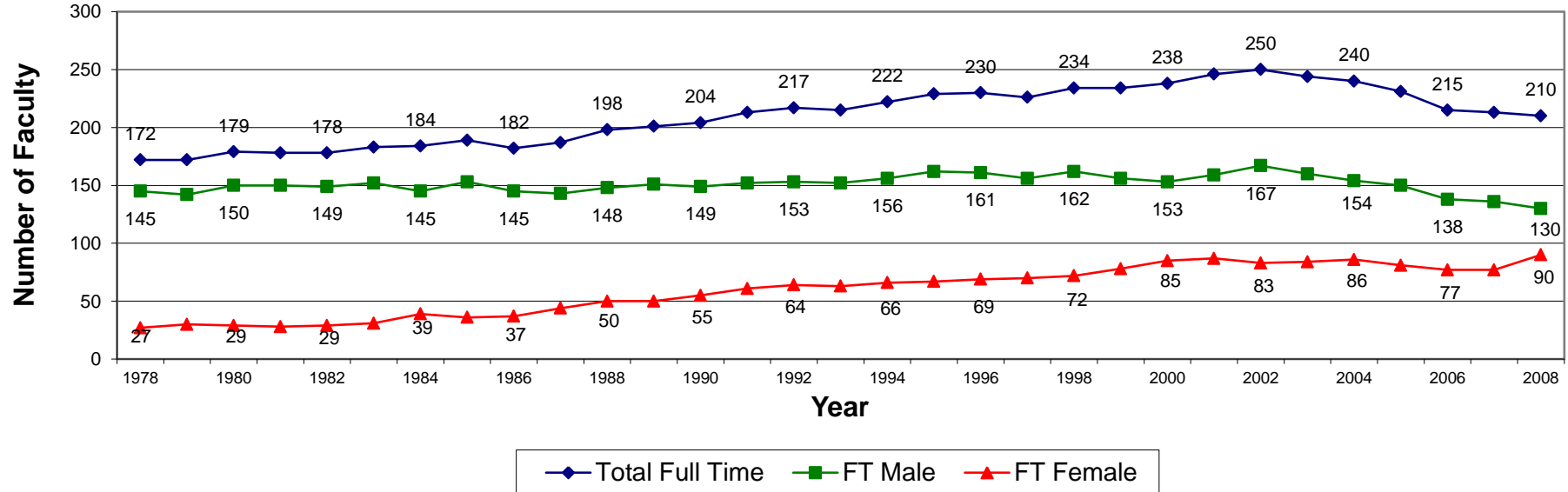
## TEACHING PERSONNEL\*

FALL	FULL-TIME FACULTY			PART-TIME LECTURERS			GRADUATE ASSISTANTS			TOTAL		
	Male	Female	Total	Male	Female	Total	Male	Female	Total	Male	Female	Total
1978	145	27	172	37	29	66	30	10	40	212	66	278
1979	142	30	172	33	29	62	22	12	34	197	71	268
1980	150	29	179	34	31	65	11	19	30	195	79	274
1981	150	28	178	43	25	68	15	19	34	208	72	280
1982	149	29	178	41	26	67	20	18	38	210	73	283
1983	152	31	183	44	32	76	17	10	27	213	73	286
1984	145	39	184	45	31	76	21	17	38	211	87	298
1985	153	36	189	39	35	74	21	17	38	213	88	301
1986	145	37	182	30	23	53	22	19	41	197	79	276
1987	143	44	187	41	23	64	31	22	53	215	89	304
1988	148	50	198	40	30	70	35	27	62	223	107	330
1989	151	50	201	59	43	102	31	27	58	241	120	361
1990	149	55	204	63	52	115	31	29	60	243	136	379
1991	152	61	213	69	41	110	28	38	66	249	140	389
1992	153	64	217	74	50	124	22	46	68	249	160	409
1993	152	63	215	69	62	131	26	40	66	247	165	412
1994	156	66	222	69	65	134	35	28	63	260	159	419
1995	162	67	229	79	78	157	30	37	67	271	182	453
1996	161	69	230	60	91	151	21	43	64	242	203	445
1997	156	70	226	78	88	166	24	41	65	258	199	457
1998	162	72	234	83	97	180	33	35	68	278	204	482
1999	156	78	234	92	84	176	34	37	71	282	199	481
2000	153	85	238	83	81	164	29	36	65	265	202	467
2001	159	87	246	89	82	171	24	43	67	272	212	484
2002	167	83	250	75	72	147	30	47	77	272	202	474
2003	160	84	244	93	74	167	36	42	78	289	200	489
2004	154	86	240	90	79	169	27	44	71	271	209	480
2005	150	81	231	87	82	169	27	47	74	271	210	474
2006	138	77	215	81	81	162	22	47	69	241	205	446
2007	136	77	213	94	95	189	29	46	75	259	218	477
2008	130	90	210	88	87	175	29	46	75	250	210	460

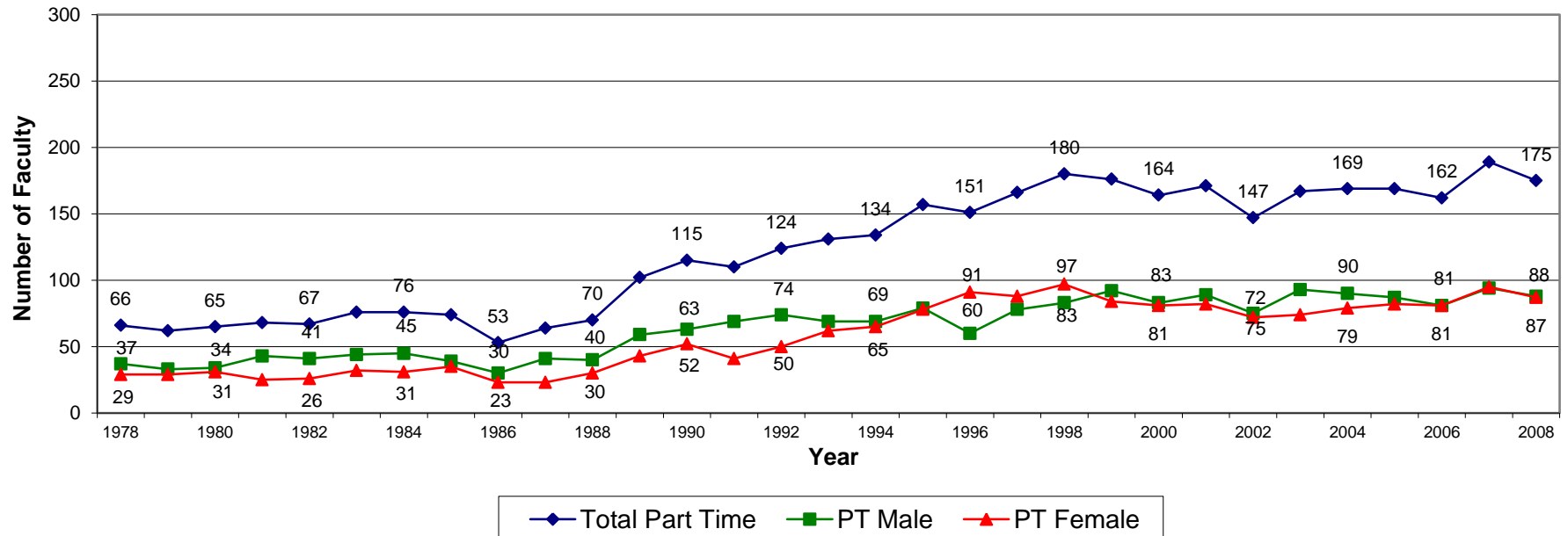
\*Excluding administrators holding faculty status or rank

Source: Academic Vice President's Office

### FULL-TIME FACULTY BY GENDER



### PART-TIME FACULTY BY GENDER



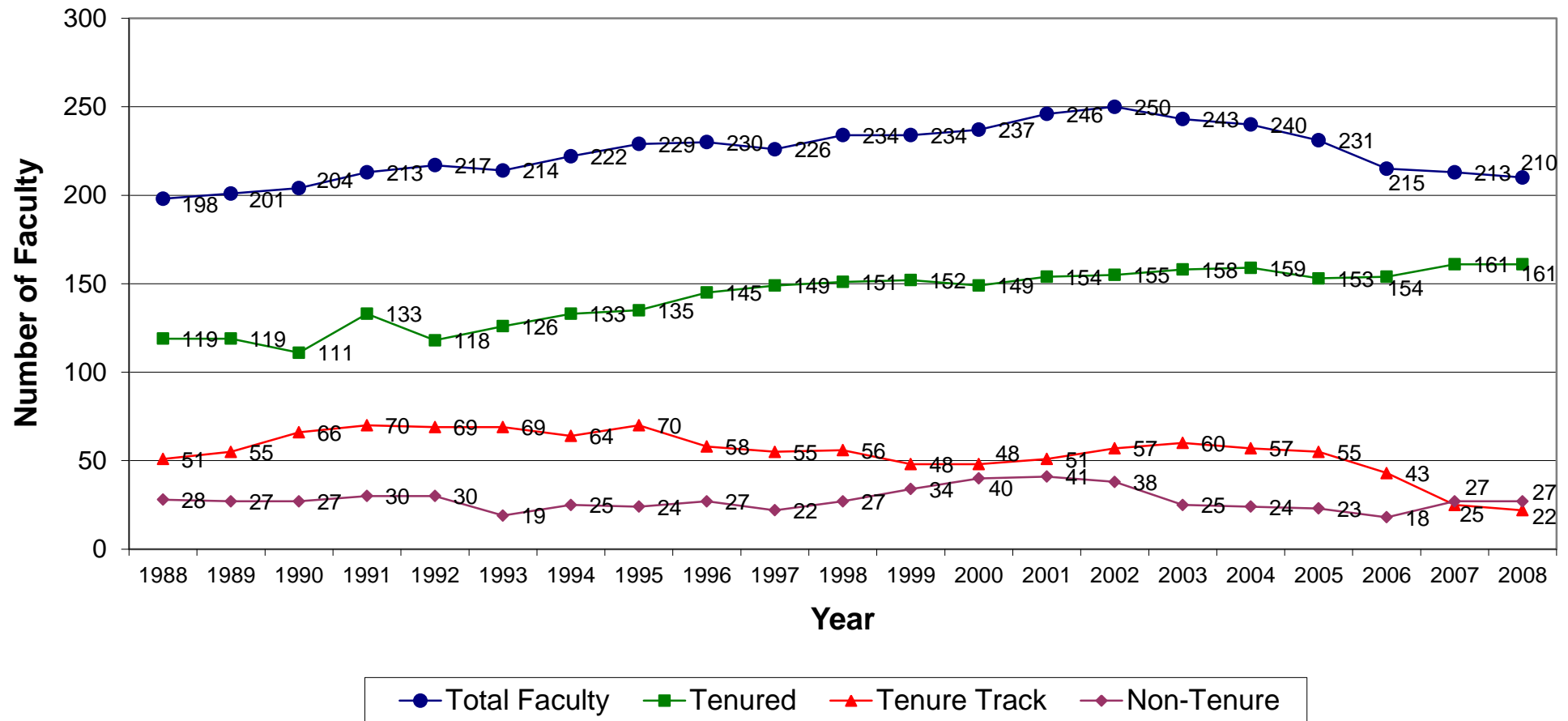
## TENURE STATUS OF FULL-TIME FACULTY\*

	Tenured		Not Tenured but on tenure track		Non-tenure track		Total Faculty
1988	119	60.1%	51	25.8%	28	14.1%	198
1989	119	59.2%	55	27.4%	27	13.4%	201
1990	111	54.4%	66	32.4%	27	13.2%	204
1991	133	53.0%	70	32.9%	30	14.1%	213
1992	118	54.4%	69	31.8%	30	13.8%	217
1993	126	58.9%	69	32.2%	19	8.9%	214
1994	133	60.0%	64	28.8%	25	11.2%	222
1995	135	59.0%	70	30.6%	24	10.4%	229
1996	145	63.0%	58	25.2%	27	11.8%	230
1997	149	65.9%	55	24.3%	22	9.8%	226
1998	151	64.6%	56	23.9%	27	11.5%	234
1999	152	65.0%	48	20.5%	34	14.5%	234
2000	149	62.9%	48	20.2%	40	16.9%	237
2001	154	62.6%	51	20.7%	41	16.7%	246
2002	155	62.0%	57	22.8%	38	15.2%	250
2003	158	65.0%	60	24.7%	25	10.3%	243
2004	159	66.2%	57	23.8%	24	10.0%	240
2005	153	66.2%	55	23.8%	23	10.0%	231
2006	154	71.6%	43	20.0%	18	8.4%	215
2007	161	75.6%	25	11.7%	27	12.7%	213
2008	161	76.7%	22	10.5%	27	12.8%	210

\*Excluding administrators holding faculty status or rank  
while including librarians holding faculty status

Source: Office of Institutional Research

## FULL-TIME FACULTY BY TENURE STATUS 1988-2008



DISTRIBUTION OF FULL-TIME TEACHING FACULTY\*  
BY DEPARTMENT AND BY RANK

SEPTEMBER, 2008

DEPARTMENT	PROFESSORS	ASSOCIATE PROFESSORS	ASSISTANT PROFESSORS	INSTRUCTORS	TOTAL
Accountancy	3	1	0	2	6
Art History and Humanities	0	3	0	0	3
Biology	2	4	3	0	9
Chemistry	2	3	4	0	9
Class. & Mod. Lang. & Cultures	4	8	3	2	17
Communications & Theatre Arts	4	6	1	2	13
Economics and Finance	5	6	1	0	12
Education & Allied Studies	5	6.5	6	2	19.5
English	3	8	6	0	17
History	2	6	1	0	9
Mgmt., Mkt., and Logistics	4	5	4	3	16
Mathematics & Comp. Science	8	4.5	1	0	13.5
Military Science	1	0	2	0	3
Philosophy	6	3	4	0	13
Physics	2	0	4	0	6
Political Science	1	2	4	0	7
Psychology	5	3	2	1	11
Religious Studies	8	2	0	0	10
Sociology	3	3	2	0	8
	—	—	—	—	—
Total	68	74	48	12	202
Percentages	33.7%	36.6%	23.8%	5.9%	100.0%

\*Excluding librarians and administrators holding faculty status or rank

Source: Office of Institutional Research

FULL-TIME TEACHING FACULTY\*  
BY RANK

	Professor		Associate Professor		Assistant Professor		Instructor		Total
1988	72	37.9%	35	18.4%	71	37.4%	12	6.3%	190
1989	64	33.2%	42	21.8%	76	39.4%	11	5.7%	193
1990	59	29.9%	44	22.3%	82	41.6%	12	6.1%	197
1991	59	28.6%	46	22.3%	87	42.2%	14	6.8%	206
1992	63	30.1%	53	25.4%	81	38.8%	12	5.7%	209
1993	60	29.3%	56	27.3%	75	36.6%	14	6.8%	205
1994	60	28.2%	61	28.6%	76	35.7%	16	7.5%	213
1995	59	26.8%	64	29.1%	77	35.0%	20	9.1%	220
1996	63	28.6%	63	28.6%	80	36.4%	14	6.4%	220
1997	63	29.0%	62	28.6%	78	35.9%	14	6.5%	217
1998	63	28.1%	70	31.3%	77	34.4%	14	6.3%	224
1999	61	27.2%	71	31.7%	74	33.0%	18	8.0%	224
2000	64	28.1%	68	29.8%	73	32.0%	23	10.1%	228
2001	67	28.4%	68	28.8%	79	33.5%	22	9.3%	236
2002	66	27.6%	68	28.5%	83	34.7%	22	9.2%	239
2003	70	30.0%	68	29.2%	83	35.6%	12	5.2%	233
2004	70	30.3%	69	29.9%	78	33.8%	14	6.0%	231
2005	67	30.2%	67	30.2%	76	34.2%	12	5.4%	222
2006	69	33.5%	67	32.5%	65	31.6%	5	2.4%	206
2007	66	32.3%	75	36.8%	54	26.5%	8	4.4%	204
2008	68	33.7%	74	36.6%	48	23.8%	12	5.9%	202

\*Excluding librarians and administrators holding faculty status and rank

Source: Office of Institutional Research

FULL-TIME TEACHING FACULTY\*  
 TERMINAL DEGREES BY GRANTING UNIVERSITIES  
 FALL, 2008

Case Western Reserve University	14
Kent State University	14
University of Wisconsin	11
The Ohio State University	8
Cleveland State University	4
Northwestern University	4
University of Michigan	4
University of North Carolina at Chapel Hill	4
University of Toronto	4
Boston College	3
Cornell University	3
Michigan State University	3
New York University	3
University of Akron	3
University of Chicago	3
University of Maryland	3
Ball State University	2
Bowling Green State University	2
Harvard University	2
Illinois Institute of Technology	2
Indiana University	2
Miami University	2
Pennsylvania State University	2
Purdue University	2
State University of New York at Binghamton	2
University of California-Los Angeles	2
University of California-San Diego	2
University of California-Santa Barbara	2
University of Florida	2
University of Iowa	2
University of Kansas	2
University of Kentucky	2
University of Massachusetts	2
University of Notre Dame	2
University of Toledo	2
University of Washington	2
West Virginia University	2
Yale University	2
Other Universities	52
	<hr/> 184

PERCENT OF FULL-TIME TEACHING FACULTY  
 HOLDING TERMINAL DEGREES: 91.1%

\*Excluding librarians and administrators holding faculty status or rank

Source: Office of Institutional Research



FULL-TIME TEACHING FACULTY\*  
WITH TERMINAL DEGREES

	Number of faculty with terminal degrees	Percentage of faculty with terminal degrees
1988	153	80.5%
1989	156	80.8%
1990	163	82.7%
1991	169	82.0%
1992	180	86.1%
1993	183	89.3%
1994	188	88.7%
1995	191	86.8%
1996	198	90.0%
1997	196	90.3%
1998	202	90.2%
1999	201	90.0%
2000	203	89.0%
2001	210	89.0%
2002	211	89.0%
2003	219	94.0%
2004	213	92.2%
2005	206	92.8%
2006	194	94.2%
2007	188	92.2%
2008	184	91.1%

\* Excluding librarians and administrators holding faculty status or rank

Source: Office of Institutional Research

## MINORITY FULL-TIME FACULTY\*

Fall Semester	African American	Asian or Pacific Is.	Hispanic	Amer. Ind. or Alaskan Nat.	White	Total Faculty	Total Minorities	% Minority
1988	2	6	3	2	185	198	13	6.6%
1989	1	6	3	1	190	201	11	5.5%
1990	1	8	4	1	190	204	14	6.9%
1991	4	9	3	1	196	213	17	8.0%
1992	6	9	3	1	198	217	19	8.8%
1993	5	7	3	1	199	215	16	7.4%
1994	4	6	3	0	209	222	13	5.9%
1995	7	5	6	1	210	229	19	8.3%
1996	7	5	6	1	211	230	19	8.3%
1997	7	5	5	1	208	226	18	8.0%
1998	9	5	5	1	214	234	20	8.5%
1999	9	5	6	0	214	234	20	8.5%
2000	8	7	6	0	217	238	21	8.8%
2001	9	10	8	0	219	246	27	11.0%
2002	8	9	6	0	227	250	23	9.2%
2003	8	11	5	0	220	244	24	9.8%
2004	8	9	6	0	217	240	23	9.6%
2005	8	10	6	0	207	231	24	10.4%
2006	7	7	7	0	194	215	21	9.8%
2007	8	8	7	0	190	213	23	10.8%
2008	8	7	8	0	187	210	23	11.0%

\*Excluding administrators holding faculty status or rank

Source: Office of Institutional Research

# RECIPIENTS OF THE DISTINGUISHED FACULTY AWARD

The Distinguished Faculty Award recognizes teaching excellence, personal scholarship, advisement and leadership of students, and community service.

YEAR	RECIPIENT	DEPARTMENT
1969	Dr. Joseph L. Hunter	Physics
1970	Mr. Joseph T. Cotter	English
1971	Dr. Arther S. Trace	English
1972	Dr. Michael S. Pap	History
1973	Dr. Robert C. Bohinski	Chemistry
1974	Dr. Robert S. More	Bus. Administration
1975	Dr. Joseph P. Owens, S.J.	Education
1976	Dr. James A. Walsh	Chemistry
1977	Dr. Walter S. Nosal	Education
1978	Dr. Donald W. Smythe, S.J.	History
1979	Dr. Richard W. Clancey	English
1980	Dr. Helen M. Murphy	Psychology
1981	Rev. C. R. Bukala, S.J.	Philosophy
1982	Dr. Edward J. Walter	Mathematics
1983	Dr. Joseph B. Miller	Communications
1984	Rev. William H. Nichols, S.J.	Physics
1985	Mr. Leone J. Marinello	Communications
1986	Dr. Cyrilla H. Wideman	Biology
1987	Dr. David M. La Guardia	English
1988	Dr. Duane A. Dukes	Sociology
1989	Dr. Thomas M. Tomasic	Philosophy
1990	Dr. Nick R. Baumgartner	Chemistry
1991	Dr. John R. Spencer	Religious Studies
1992	Dr. Joseph T. Bombelles	Economics & Finance
1993	Dr. Joseph Trivisonno	Physics
1994	Dr. Marian J. Morton	History
1995	Dr. Raj Aggarwal	Economics & Finance
1996	Dr. Richard K. Fleischman, Jr.	Accountancy
1997	Dr. Joseph F. Kelly	Religious Studies
1998	Dr. Robert D. Sweeney	Philosophy
1999	Dr. Klaus Fritsch	Physics
2000	Dr. Robert H. Getscher	Art History
2001	Rev. Thomas L. Schubeck, S. J.	Religious Studies
2002	Dr. Paul R. Murphy	Management, Marketing & Logistics
2003	Dr. Miles M. Coburn	Biology
2004	Dr. Jeanne M. Colleran	English
2005	Dr. Andrew M. Welki	Economics & Finance
2006	Dr. Christopher M. Faiver	Education and Allied Studies
2007	Dr. Paul J. Lauritzen	Religious Studies
2008	Dr. George B. Bilgere	English

## LUCREZIA CULICCHIA AWARD FOR TEACHING EXCELLENCE

The Lucrezia Culicchia Award For Teaching Excellence was specifically established to recognize teaching excellence and is awarded annually to a faculty member in the College of Arts and Sciences.

YEAR	RECIPIENT	DEPARTMENT
1990	Dr. Janet D. Larsen	Psychology
1991	Dr. Harry C. Nash	Physics
1992	Mr. Jerry L. Moreno	Math. & Comp. Science
1993	Dr. David M. LaGuardia	English
1994	Dr. Heidi Stull	Cl. & Mod. Lang. & Cultures
1995	Dr. Jeanne M. Colleran	English
1996	Dr. Valerie R. Flechtner	Biology
1997	Dr. Brenda A. Wirkus	Philosophy
1998	Dr. Carl R. Spitznagel	Math. & Comp. Science
1999	Dr. Patrick J. Mooney	Philosophy
2000	Dr. Marian J. Morton	History
2001	Dr. Katherine M. Gatto	Cl. & Mod. Lang. & Cultures
2002	Mr. Anthony L. Palermo	Religious Studies
2003	Dr. Barbara K. D'Ambrosia	Math. & Comp. Science
2004	Dr. Margaret O. Finucane	Communications
2005	Dr. Mariana J. Ortega	Philosophy
2006	Dr. Mark J. Waner	Chemistry
2007	Dr. James L. Lissemore	Biology
2008	Dr. Christopher Roark	English

### WASMER OUTSTANDING TEACHING AWARD

The Wasmer Outstanding Teaching Award was established to recognize teaching excellence and is awarded annually to a faculty member in the Boler School of Business. The recipient is chosen from the five candidates receiving the most votes for the Student Business Advisory Council's Outstanding Teacher Award.

YEAR	RECIPIENT	DEPARTMENT
1992	Dr. Andrew M. Welki	Economics & Finance
1993	Dr. Marian M. Extejt	Mgmt., Mkt., and Logistics
1994	Dr. Marc P. Lynn	Mgmt., Mkt., and Logistics
1995	Dr. Marilyn Collins	Accountancy
1996	Dr. Donald R. Domm	Mgmt., Mkt., and Logistics
1997	Dr. Andrew M. Welki	Economics & Finance
1998	Dr. Susan H. Higgins-DeFago	Mgmt., Mkt., and Logistics
1999	Dr. William N. Bockanic	Mgmt., Mkt., and Logistics
2000	Dr. Marc P. Lynn	Mgmt., Mkt., and Logistics
2001	Dr. Charles A. Watts	Mgmt., Mkt., and Logistics
2002	Dr. Andrew M. Welki	Economics & Finance
2003	Dr. Walter O. Simmons	Economics & Finance
2004	Dr. James H. Martin	Mgmt., Mkt., and Logistics
2006	Dr. Gerald P. Weinstein	Accountancy
2007	Dr. Scott B. Moore	Economics & Finance

### CURTIS W. MILES FACULTY AWARD FOR COMMUNITY SERVICE

The Curtis W. Miles Award For Community Service was established to recognize a member of the faculty who has demonstrated a significant contribution to the Cleveland Community in the area of community service consistent with the University's mission and goals.

YEAR	RECIPIENT	DEPARTMENT
1992	Dr. John C. Soper	Economics & Finance
1993	Dr. Mark E. Diffenderfer	Sociology
1994	Dr. Lauren L. Bowen	Political Science
1996	Mr. Wilhelm Bartsch	Cl. & Mod. Lang. & Cultures
1997	Dr. Sally H. Wertheim	Education & Allied Studies/Graduate School
1998	Dr. Gerald P. Weinstein	Accountancy
2005	Dr. Sharon Kaye	Philosophy
2006	Dr. Margaret O. Finucane	Communications and Theatre Arts
2007	Dr. Richard Clark	Sociology

RECIPIENTS OF THE  
GEORGE E. GRAUEL FACULTY FELLOWSHIPS  
1996-2009

Grael Fellowships provide paid leave to encourage faculty members to pursue promising research and writing projects and other faculty development opportunities. The Fellowships are named in memory of Dr. George E. Grauel, who served the University from 1933 until his death in 1967. Dr. Grauel was professor of English, Dean of the Evening College, and Director of Institutional Planning. Recipients of the fellowships to date have been:

YEAR	RECIPIENT	DEPARTMENT
1996-1997	Dr. F. Komla Aggor	Cl. & Modern Lang. & Cul.
	Dr. David G. Anderson	Cl. & Modern Lang. & Cul.
	Dr. Dean N. Birch	Political Science
	Dr. Mark E. Diffenderfer	Sociology
	Dr. Michael R. Fisch	Physics
	Sr. Mary Ann Flannery	Communications
	Dr. Richard K. Fleischman, Jr.	Accountancy
	Dr. David J. Klooster	English
	Dr. Graciela Lacueva	Physics
	Dr. David R. Mason	Religious Studies
	Dr. Marian J. Morton	History
	Dr. David W. Robson	History
	Dr. Kathleen A. Roskos	Education & Allied Studies
	Dr. Jacqueline J. Schmidt	Communications
	Dr. Jonathan E. Smith	Mgmt., Mkt., and Logistics
	Dr. Andreas Sobisch	Political Science
1997-1998	Dr. Linda C. Brazdil	Chemistry
	Dr. Doris K. Donnelly	Religious Studies
	Dr. Christopher M. Faiver	Education & Allied Studies
	Dr. Joseph F. Kelly	Religious Studies
	Dr. Linda A. Koch	Art History & Humanities
	Dr. Brian K. Macaskill	English
	Dr. James H. Martin	Mgmt., Mkt., and Logistics
	Dr. Pamela A. Mason	Political Science
	Dr. John S. McBratney	English
	Dr. Sheila E. McGinn	Religious Studies
	Dr. Paul R. Murphy	Mgmt., Mkt., and Logistics
	Dr. Thomas R. Nevin	Cl. & Modern Lang. & Cul.
	Dr. Paul K. Nietupski	Religious Studies
	Dr. Marvin M. Richards, III	Cl. & Modern Lang. & Cul.
	Dr. Robert D. Sweeney	Philosophy
1998-1999	Dr. Matthew P. Berg	History
	Dr. Robert Bloom	Accountancy
	Dr. Francesco C. Cesareo	History
	Dr. Paul R. Challen	Chemistry
	Dr. Patrick B. Chen	Math. & Comp. Science
	Dr. Miles M. Coburn	Biology
	Dr. Jeanne M. Collieran	English
	Dr. Marilyn L. Collins	Accountancy
	Dr. Klaus Fritsch	Physics
	Dr. John L. Guidabaldi	Education & Allied Studies
	Dr. Lisa L. Hall	Philosophy
	Dr. James L. Lissemore	Biology
	Dr. Joan M. Nuth	Religious Studies
	Dr. Antonio Perez-Romero	Cl. & Modern Lang. & Cul.
	Dr. Leo J. Schneider	Math. & Comp. Science
	Dr. Charles E. Scillia	Art History & Humanities
	Dr. James C. Swindal	Philosophy
1999-2000	Dr. Leslie S. Curtis	Art History & Humanities
	Dr. Enrique Luengo	Cl. & Modern Lang. & Cul.
	Dr. Kathleen M. Manning	Education & Allied Studies
	Dr. Dwight M. Olson	Math. & Comp. Science
	Dr. Mariana J. Ortega	Philosophy
	Dr. Martha Pereszlenyi-Pinter	Cl. & Modern Lang. & Cul.
	Rev. Thomas L. Schubeck, S.J.	Religious Studies
	Dr. Gerald P. Weinstein	Accountancy

2000-2001	Dr. Carl D. Anthony	Biology
	Dr. Mary E. Beadle	Communications
	Dr. Lindsay N. Calkins	Economics & Finance
	Dr. Barbara K. D'Ambrosia	Math. & Comp. Science
	Dr. Jason Earle	Education & Allied Studies
	Dr. Karen L. Gygli	Communications
	Dr. Phyllis B. Harris	Sociology
	Dr. Jeffrey R. Johansen	Biology
	Dr. Catherine Miller	Chemistry
	Dr. Donald M. Poduska	Cl. & Modern Lang. & Cul.
	Dr. Roger W. Purdy	History
	Dr. Chris R. Roark	English
	Dr. Nicholas R. Santilli	Psychology
	Dr. David C. Schirm	Economics & Finance
	Dr. Paul L. Shick	Math. & Comp. Science
	Dr. John R. Spencer	Religious Studies
	Dr. Karen S. Walton	Accountancy
2001-2002	Dr. F. Komla Aggor	Cl. & Modern Lang. & Cul.
	Dr. George B. Bilgere	English
	Dr. William J. Cenker	Accountancy
	Dr. Richard K. Fleischman	Accountancy
	Dr. Katherine M. Gatto	Cl. & Modern Lang. & Cul.
	Dr. Daniel Kilbride	History
	Dr. James H. Krukones	History
	Dr. Susan O. Long	Sociology
	Dr. Maryclaire Moroney	English
	Dr. Marian J. Morton	History
	Dr. Daniel W. Palmer	Math. & Comp. Science
	Dr. Hélène N. Sanko	Cl. & Modern Lang. & Cul.
	Dr. John C. Soper	Economics & Finance
	Dr. Elizabeth v. Swenson	Psychology
2002-2003	Dr. Joseph F. Kelly	Religious Studies
	Dr. John F. Klein	Sociology
	Dr. Linda A. Koch	Art History & Humanities
	Rev. Stephen T. Krupa, S.J.	Religious Studies
	Dr. Ann Kugler	History
	Dr. John S. McBratney	English
	Dr. Sheila E. McGinn	Religious Studies
	Dr. Paul R. Murphy	Mgmt., Mkt., and Logistics
	Dr. Paul K. Nietupski	Religious Studies
	Dr. Marvin M. Richards, III	Cl. & Modern Lang. & Cul.
	Dr. Larry M. Schwab	Political Science
	Dr. Brenda A. Wirkus	Philosophy
	Dr. Thomas J. Zlatoper	Economics & Finance
2003-2004	Dr. Matthew P. Berg	History
	Dr. Robert Bloom	Accountancy
	Dr. Santa Casciani	Cl. & Modern Lang. & Cul./Bishop Pilla Prog.
	Dr. Jeanne M. Colleran	English
	Dr. J. Benjamin Forbes	Mgmt., Mkt., and Logistics
	Dr. Graciela Lacueva	Physics
	Dr. Paul J. Lauritzen	Religious Studies
	Dr. David P. Mascotti	Chemistry
	Dr. Thomas R. Nevin	Cl. & Modern Lang. & Cul.
	Dr. Antonio Perez-Romero	Cl. & Modern Lang. & Cul.
	Dr. Debra J. Rosenthal	English
	Dr. Carin Ruff	English
2004-2005	Dr. Paula J. Britton	Education & Allied Studies
	Dr. Gregory A. DiLisi	Education & Allied Studies
	Dr. Thomas R. Evans	Psychology
	Rev. Harry J. Gensler, S.J.	Philosophy
	Dr. Marc Kirschenbaum	Math. & Comp. Science
	Dr. Roland L. Madison	Accountancy
	Mr. Nevin Mayer	Grasselli Library
	Rev. Thomas L. Schubeck, S.J.	Religious Studies
	Dr. Earl W. Spurgin	Philosophy

2005-2006	Dr. Gerald B. Guest	Art History & Humanities
	Dr. Jeffrey R. Johansen	Biology
	Dr. Sharon M. Kaye	Philosophy
	Dr. James L. Lissemore	Biology
	Dr. Pamela A. Mason	Political Science
	Dr. Philip J. Metres III	English
	Dr. Patrick J. Mooney	Philosophy
	Dr. Albert Nagy	Accountancy
	Dr. Michael Nichols	Chemistry
	Dr. Mariana J. Ortega	Philosophy
	Dr. Christopher R. Roark	English
	Rev. Francis X. Ryan, S.J.	English
	Dr. John R. Spencer	Religious Studies
	Dr. Mark G. Storz	Education & Allied Studies
	Dr. E. Paul Thomson	Philosophy
2006-2007	Dr. Carl D. Anthony	Biology
	Dr. Denise D. Ben-Porath	Psychology
	Dr. A. Roy Day	Physics
	Dr. Valerie R. Flechtner	Biology
	Dr. Katherine M. Gatto	Cl. & Modern Lang. & Cul.
	Dr. Steven Hayward	English
	Dr. K. Julia Karolle-Berg	Cl. & Modern Lang. & Cul.
	Dr. Peter J. Kvidera	English
	Dr. Maria N. Marsilli	History
	Dr. Daniel W. Palmer	Math. & Comp. Science
	Dr. Dianna E. Taylor	Philosophy
	Dr. Charles A. Watts	Mgmt., Mkt., and Logistics
2007-2008	Dr. George B. Bilgere	English
	Dr. William J. Cenker	Accountancy
	Dr. Gwendolyn Compton-Engle	Cl. & Modern Lang. & Cul.
	Dr. Jeffrey S. Dyck	Physics
	Sr. Mary Ann Flannery	Communication & Theatre Arts
	Dr. Bradley Z. Hull	Mgmt., Mkt., and Logistics
	Dr. Linda A. Koch	Art History & Humanities
	Dr. Susan O. Long	Sociology
	Dr. Michael P. Martin	Biology
	Ms. Melody L. McMahon	Library
	Dr. Mindy J. Peden	Political Science
	Dr. Zeki Saritoprak	Religious Studies
	Dr. Christopher A. Sheil	Biology
	Dr. Wendy A. Wiedenhoft	Sociology
2008-2009	Mr. Thomas L. Hayes	English
	Dr. Abdulrazaq A. Imam	Psychology
	Dr. Robert J. Kolesar	History
	Dr. Jen McWeeney	Philosophy
	Dr. Paul K. Nietupski	Religious Studies
	Dr. Naveed K. Piracha	Physics
	Dr. David W. Rainey	Psychology
	Dr. Leo J. Schneider	Math. & Comp. Science
	Dr. Edward Tomlinson	Mgmt., Mkt., and Logistics
	Dr. Mark J. Waner	Chemistry



**A  
L  
U  
M  
N  
I**

**A  
L  
U  
M  
N  
I**

## NUMBERS OF JCU ALUMNI BY STATE

Total living alumni - 37,871

Alabama	56	Montana	17
Alaska	13	Nebraska	25
Arizona	270	Nevada	73
Arkansas	24	New Hampshire	47
California	781	New Jersey	236
Colorado	221	New Mexico	39
Connecticut	178	New York	948
Delaware	35	North Carolina	395
District of Columbia	72	North Dakota	10
Florida	1,088	Ohio	22,220
Georgia	328	Oklahoma	20
Hawaii	26	Oregon	56
Idaho	17	Pennsylvania	1,831
Illinois	1,790	Rhode Island	31
Indiana	273	South Carolina	148
Iowa	33	South Dakota	9
Kansas	55	Tennessee	110
Kentucky	114	Texas	384
Louisiana	30	Utah	27
Maine	38	Vermont	22
Maryland	394	Virginia	401
Massachusetts	256	Washington	112
Michigan	782	West Virginia	46
Minnesota	91	Wisconsin	146
Mississippi	10	Wyoming	10
Missouri	165		

US TERRITORIES		ARMED FORCES	
Guam	3	Afr/Can/Eur/Mid E	13
Puerto Rico	8	Americas	1
Virgin Islands	3	Pacific	2

## TOP TEN STATES

Ohio	22,220
Pennsylvania	1,831
Illinois	1,790
Florida	1,088
New York	948
Michigan	782
California	781
Virginia	401
North Carolina	395
Maryland	394

Source: Alumni Office

## NATIONAL ALUMNI PRESIDENTS SINCE 1950

YEARS	NAME
1950 - 1952	*J. Harold Traverse '19
1952 - 1954	*Lawrence A. Arth '26
1954 - 1955	*Regis J. McNamee, M.D. '31
1955 - 1956	*Franklin A. Polk '35
1956 - 1958	Lee J. Cirillo '51
1958 - 1961	Raymond J. Turk, Ph.D. '29
1961 - 1963	George M. Knoblauch '48
1963 - 1965	*Robert M. Slife '34
1965 - 1967	*Leo J. Arbeznic '37
1967 - 1969	*Francis X. Feighan '35
1969 - 1972	Kenneth R. Callahan, D.M.D. '50
1972 - 1974	*Timothy R. Sweeney '57
1974 - 1976	Leonard H. Soeder '50
1976 - 1978	James L. Mason '60
1978 - 1980	John M. Baker '64
1980 - 1981	Stanley J. Glod '58
1981 - 1982	James E. Thailing '60
1982 - 1983	Thomas J. Gerst '61
1983 - 1985	James L. McCrystal, Jr. '70
1985 - 1986	Linda M. Meglin '74
1986 - 1988	James M. Mackey '71
1988 - 1991	J. Gordon Priemer '64
1991 - 1993	Allyn R. Adams '64
1993 - 1995	Albert J. DeGulis '56
1995 - 1997	Robert C. Maynard '58
1997 - 1999	*Gerald J. Breen '68, 75G
1999 - 2001	Michael J. Minnaugh '82
2001 - 2004	Nikki Bondi McPolin '72
2005 - 2007	Paul J. Hulseman '82
2007-	Kenneth R. Honecker '04G

\* Deceased

Source: Alumni Office

In 1961, the John Carroll University Alumni Association presented the first Alumni Medals to William J. Corrigan '11 and Dr. Edmund Smolik '32. Since the first awards ceremony, 120 alumni have received this award, the highest honor given by the University's Alumni Association. The Alumni Medal is the highest honor given annually by the university's Alumni Association for an individual's accomplishments in their profession, exemplary family and personal life, contributions to their community and dedicated service to John Carroll University.

YEAR	RECIPIENT	YEAR	RECIPIENT
1984	Most Rev. William Cosgrove '38 (deceased) Arthur J. Noetzel '38, Ph.D. Joseph T. O'Brien '31 (deceased) John C. Wasmer, Jr. '45 (deceased)	1998	Sister Mary Assumpta, C.C.Sp. '73G Raymond E. Smiley '51
1985	John M. Baker '64 James L. Mason '60 Ralph Vince H.A. (deceased)	1999	Allyn R. Adams '64 David P. Nichting '60, '68G Bruce E. Thompson '43
1986	Thomas M. Gibbons '49 J. Joseph Whelan '65	2000	James P. Conway '50 Richard J. Giffels '56 (deceased) Evelyn Jenkins Gunn '73G Donald E. McDonald '44
1987	Kenneth R. Callahan '50, D.M.D. Rev. Howard J. Kerner, S.J., H.A. (deceased) Charles A. Muer '59 (deceased) John T. Reali '58	2001	Donna B. Brown '72 Fr. Gerard M. Gonda, OSB '76 John J. Pokorny '37 (deceased) Charles J. Prochaska, M.D. '31 (deceased) Robert T. Sullens, DBA '53
1988	Edward D. Dickson '73 John A. Morley '55 (deceased)	2002	Rev. Casimir R. Bukala, S.J. '54, '55G Gerald J. Schweickert, Ph.D. '60 Robert Sly, M.D. '42 (deceased) The Hon. Pauline H. Tarver '75 COL Carl Walz, USAF '79G
1989	Leonard H. Calabrese '71, M.D. Michael A. Dwyer '37 (deceased)	2003	Charles W. Heaton '38 (deceased) William F. Sweeney '48 George F. Wasmer '58 Martha A. Walther '76
1990	Michael W. Conway '64 James J. McDonough '55 Helen K. Weil '43 (deceased)	2004	Albert J. DeGulis '56 The Most Rev. A. Edward Pevec D.D. '56 Donald F. Kuratko, Ph.D. '74 Beverly G. Hawk, Ph.D. '75
1991	Thomas J. Gerst '61 Rev. Daniel T. Rice, SJ '40 (deceased) the Hon. Francis J. Talty '42 (deceased)	2005	John M. Boler '56 John G. Breen '56 Leonard M. Calabrese '68 Mary Power Patton '83
1992	Pierre "Pete" Diemer '43 John C. Durkin '61 Gene C. Zannoni '39 (deceased)	2006	Donald J. Coburn, M.D. '43 COL Salvatore R. Felice (RET), USAR '57 Paul Kantz, Jr. '63 Molly G. Robinson '75 Rev. Joseph H. Callahan '79
1993	John R. Cunin '50 (deceased) Ralph "Pete" French '34 (deceased) Elizabeth and Jack (deceased) Hissong '52	2007	Gerald J. Breen '68, '75G (deceased) Timothy J. Freeman '78 John F. Lewis '62 Vincent M. Panichi '57 Barbara S. Schubert '62, '67G, '80G
1994	Mary Ann Corrigan-Davis '75 Lawrence P. Kelley '36 J. Gordon Priemer '64	2008	Barbara O. Brown '82 Sr. Nancy J. Conway, CSJ '71 Richard M. Hamlin, Sr. '49 Michael L. Hardy '69 Jack T. Hearn '61, '64G
1995	James C. Boland '62 Gerald P. O'Malley '62 Rev. Joseph O. Schell, SJ, H.A. (deceased) Thomas M. Tully '59		
1996	Chester J. Gray '35 (deceased) Sally Kenny Griswold '76G Anthony F. Lang '60 Justin R. Noetzel '40		
1997	Leo J. Arbezniak '37 (deceased) Sr. Mary Fabian Catalano, OSU, H.A. '33, '39G (deceased) Richard L. Murphy '57		

Source: Alumni Office

## ALUMNI GIVING

Year after year, John Carroll graduates show their generosity and dedication to the university through their financial support of the annual fund, capital projects, and other leadership gift opportunities, such as endowed scholarships. Their support is the foundation for university advancement. Alumni/ae giving provides essential operating support to meet ongoing and recurring university needs such as student scholarships and loans, advances in academic programming, technology improvements, library expenses, student extracurricular activities, faculty and staff salaries, and maintenance of campus facilities and grounds.

The figures reported below represent the total in alumni-ae giving including corporate matching gifts generated during the university's fiscal year.

YEAR	AMOUNT CONTRIBUTED	PERCENT OF PARTICIPATION
1978-1979	\$ 277,754	16.4
1979-1980	320,653	19.3
1980-1981	385,632	17.6
1981-1982	446,042	18.5
1982-1983	517,623	19.4
1983-1984	614,000	22.4
1984-1985	801,045	17.4
1985-1986	1,003,785	29.4
1986-1987	1,137,210	29.5
1987-1988	1,060,547	25.8
1988-1989	1,251,060	26.0
1989-1990	1,530,100	25.3
1990-1991	1,786,000	27.0
1991-1992	1,904,280	29.0
1992-1993	2,100,623	28.5
1993-1994	2,967,264	19.5
1994-1995	3,836,835	25.0
1995-1996	4,029,705	24.9
1996-1997	4,277,352	25.0
1997-1998	4,307,214	25.1
1998-1999	4,996,461	24.9
1999-2000	8,244,490	14.0
2000-2001	17,744,651	18.1
2001-2002	5,226,317	21.8
2002-2003	4,651,142	17.8
2003-2004	11,658,608	25.3
2004-2005	5,307,364 *	15.7 **
2005-2006	5,198,703	15.0
2006-2007	6,110,218	15.2
2007-2008	6,215,529	14.5

\* Corrected from 2004-2005 Fact Book

\*\* Participation based on living alumni with an undergraduate degree with a known address and who are solicitable, consistent with the definition used for US News & World Report

Source: Development and Alumni Relations

# **F I N A N C E**

# FINANCE



SUMMARY OF OPERATING REVENUE AND EXPENDITURES - UNRESTRICTED FUND  
(In Thousands)

REVENUE	<u>1998-99</u>	<u>1999-00</u>	<u>2000-01</u>	<u>2001-02</u>	<u>2002-03</u>	<u>2003-04</u>	<u>2004-05</u>	<u>2005-06</u>	<u>2006-07</u>	<u>2007-08</u>
Tuition and fees	\$56,697	\$59,447	\$63,242	\$68,050	\$71,715	\$76,564	\$78,998	\$81,903	\$83,517	\$85,783
Less: Scholarships & grants	<u>15,600</u>	<u>16,523</u>	<u>17,565</u>	<u>18,913</u>	<u>20,281</u>	<u>22,338</u>	<u>23,187</u>	<u>24,934</u>	<u>26,163</u>	<u>\$29,749</u>
Net Tuition and fees	41,097	42,924	45,677	49,137	51,434	54,226	55,811	56,969	57,354	56,034
Auxiliary enterprises	14,083	13,988	14,374	14,871	15,213	15,903	13,254	13,279	13,390	13,394
Unrestricted Gifts										
Gifts	2,648	1,879	1,993	1,695	2,085	1,867	1,526	1,992	2,039	1,747
Contribution for quasi-endowment	1735	94	281	77	84	126	63	559	1,247	251
Transfers made to quasi-endowment	<u>(1,735)</u>	<u>(94)</u>	<u>(281)</u>	<u>(77)</u>	<u>(84)</u>	<u>(126)</u>	<u>(63)</u>	<u>(559)</u>	<u>(1,247)</u>	<u>(251)</u>
	2,648	1,879	1,993	1,695	2,085	1,867	1,526	1,992	2,039	1,747
Investment and other income	3,355	3,351	4,444	4,003	3,871	3,960	4,024	4,695	4,966	5,120
Board Authorized quasi-endowment draws	-	-	-	-	1,200	600	600	-	-	750
<b>TOTAL</b>	<u><b>\$61,183</b></u>	<u><b>\$62,142</b></u>	<u><b>\$66,488</b></u>	<u><b>\$69,706</b></u>	<u><b>\$73,803</b></u>	<u><b>\$76,556</b></u>	<u><b>\$75,215</b></u>	<u><b>\$76,935</b></u>	<u><b>\$77,749</b></u>	<u><b>\$77,045</b></u>
EXPENDITURES										
Instructional	\$22,683	\$23,036	\$24,014	\$26,001	\$28,371	\$28,467	\$28,716	\$29,841	\$29,353	\$29,069
Library	2,372	2,430	2,706	2,877	2,994	3,082	2,680	2,870	2,881	3,026
Physical plant	4,343	4,200	5,267	5,961	6,025	7,347	7,005	7,401	7,805	7,800
Administrative and general	9,634	10,360	11,384	12,673	12,904	14,428	14,261	14,648	14,472	16,015
Information Technology	1,790	1,988	2,226	2,980	3,190	3,360	3,458	3,422	3,405	3,466
Student activities	2,506	2,711	2,756	2,889	2,829	2,618	2,659	2,962	2,943	3,082
Auxiliary enterprises	10,146	9,523	9,592	10,386	11,079	10,722	8,349	8,343	8,796	8,863
Debt Service and Depreciation Reserve	3,371	4,847	4,423	4,718	6,196	6,450	7,527	7,405	7,367	7,321
<b>TOTAL</b>	<u><b>\$56,845</b></u>	<u><b>\$59,095</b></u>	<u><b>\$62,368</b></u>	<u><b>\$68,485</b></u>	<u><b>\$73,588</b></u>	<u><b>\$76,474</b></u>	<u><b>\$74,655</b></u>	<u><b>\$76,892</b></u>	<u><b>\$77,022</b></u>	<u><b>\$78,642</b></u>
Unrestricted Income (Deficit)	<u><b>\$4,338</b></u>	<u><b>\$3,047</b></u>	<u><b>\$4,120</b></u>	<u><b>\$1,221</b></u>	<u><b>\$215</b></u>	<u><b>\$82</b></u>	<u><b>\$560</b></u>	<u><b>\$43</b></u>	<u><b>\$727</b></u>	<u><b>(\$1,597)</b></u>

Source: Vice President for Finance and Treasurer

## AUDITED GIFT INCOME

The figures below represent actual cash received and do not include pledges to be paid at a future time. Figures are reported on a fiscal year basis from June 1 to the following May 31. This report follows the standards established by the Council for Aid to Education in its annual survey "Voluntary Support of Education."

YEAR	ALUMNI	CORPORATIONS	FOUNDATIONS	JESUIT COMMUNITY	INDIVIDUALS*	OTHER ORGANIZATIONS**	TOTALS
1997-98	3,395,114	843,361	1,104,483	-0-	2,018,752	-----	7,361,710
1998-99	5,065,576	954,613	767,695	-0-	2,464,207	-----	9,252,091
1999-00	9,051,758	746,739	966,028	300,025	2,879,402	-----	13,943,952
2000-01	4,082,872	1,211,647	16,585,871	238,525	319,661	-----	22,438,576
2001-02	4,963,599	774,453	3,717,277	-0-	1,240,876	-----	10,696,205
2002-03	2,652,206	949,258	3,311,552	-0-	973,072	795,155	8,681,243
2003-04	6,581,556	2,055,280	6,233,700	-0-	1,961,200	1,455,203	18,286,939
2004-05	3,051,372	1,084,440	3,671,947	-0-	681,374	2,492,236	10,981,369
2005-06	3,451,913	1,074,755	1,849,337	-0-	721,636	1,712,812	8,810,453
2006-07	4,127,333	615,137	1,463,327	125,738	593,679	1,607,925	8,533,139
2007-08	4,681,896	603,686	1,195,465	70,000	697,857	861,628	8,110,532

\*Individuals include non-alumni trustees, parents, and other friends.

\*\*Includes Fundraising Consortia

NOTE: Beginning with 2005-06, gifts to Institute for Educational Renewal are excluded as are gifts/grants received from government entities

Source: University Advancement

# ENDOWMENT GROWTH

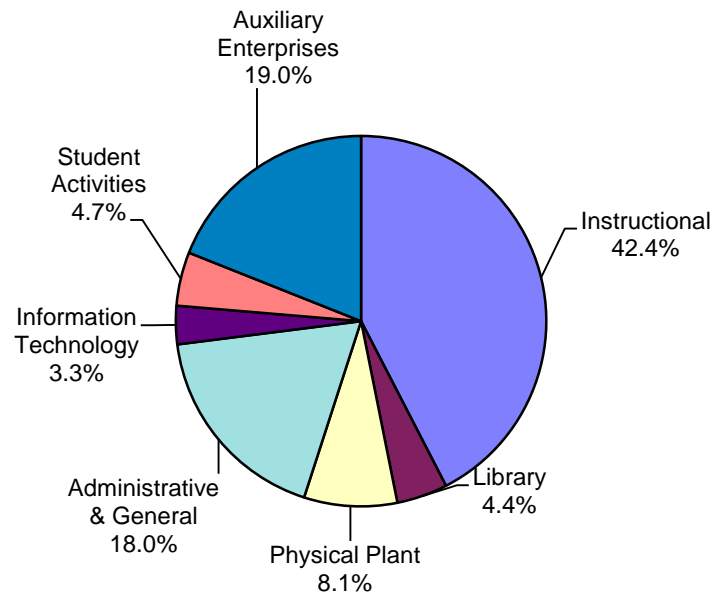
## Principal Balance of Endowment and Similar Funds

As of May 31	Fair Market Value
1983	\$ 12,842,026
1984	\$ 12,041,155
1985	\$ 15,544,605
1986	\$ 18,747,413
1987	\$ 20,931,363
1988	\$ 20,493,067
1989	\$ 23,867,847
1990	\$ 26,294,883
1991	\$ 30,525,241
1992	\$ 35,124,632
1993	\$ 50,021,878
1994	\$ 52,084,748
1995	\$ 60,035,315
1996	\$ 73,480,700
1997	\$ 97,973,569
1998	\$ 118,022,301
1999	\$ 131,513,052
2000	\$ 139,386,002
2001	\$ 139,791,261
2002	\$ 132,441,512
2003	\$ 122,445,761
2004	\$ 135,803,012
2005	\$ 142,389,730
2006	\$156,231,612
2007	\$179,534,053
2008	\$177,145,420

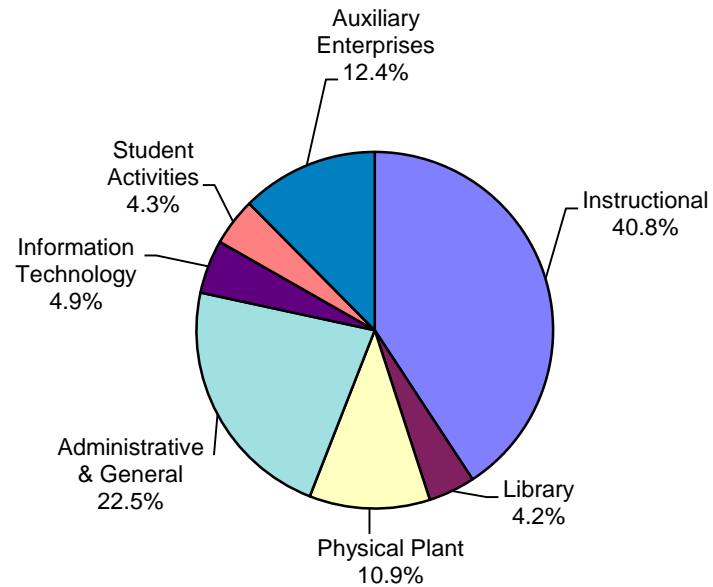
Source: Vice President for Finance and Treasurer

## EDUCATIONAL, GENERAL, AND AUXILIARY EXPENDITURES: 1998-1999 AND 2007-2008

**1998-1999**



**2007-2008**



**L  
I  
B  
R  
A  
R  
Y**

**L  
I  
B  
R  
A  
R  
Y**

GRASSELLI LIBRARY  
HOLDINGS

Year	* Books (volumes)	Print Periodicals (current subscriptions)	Microforms	Audio Visual	**E-Journals	E-Books	E-Other	Computer based Sources
1987-88	470,165	1,320	139,213	6,577	----	----	----	----
1988-89	481,259	1,387	143,358	6,985	----	----	----	----
1989-90	493,655	1,457	151,018	7,001	----	----	----	----
1990-91	506,441	1,605	158,001	7,152	----	----	----	----
1991-92	518,252	1,579	158,343	7,366	----	----	----	----
1992-93	533,899	1,620	164,737	7,595	----	----	----	----
1993-94	549,618	1,691	169,804	7,966	----	----	----	317
1994-95	564,640	1,831	176,034	8,128	----	----	----	427
1995-96	577,051	1,860	183,142	6,983	----	----	----	474
1996-97	595,719	2,064	190,805	7,576	----	----	----	506
1997-98	606,000	1,859	680,005	8,228	----	----	----	527
1998-99	616,000(app)	2,183	684,866	5,106	2,000	----	----	300
1999-00	620,000(app)	2,198	692,005	5,820	3,000	----	----	300(app)
2000-01	631,576	1,975	710,403	4,889	3,000	----	----	300(app)
2001-02	661,162	1,765	715,397	5,804	3,000	----	----	471
2002-03	683,927	1,662	720,599	7,123	5,585	----	----	1461
2003-04	719,554	1,639	725,462	7,840	4,934	----	----	17,900
2004-05	740,826	1,309	674,654	8,237	6,738	----	----	13,565
2005-06	751,046	1,305	678,794	8,203	6,836	----	----	15,900
2006-07	761,832	977	693,759	8,597	7,485	19,416	7,909	----
2007-08	766,051	893	697,132	8,954	7,655	23,373	8,237	----
2008-09	768,957	886	700,839	9,585	8,556	31,980	8,502	----

\* Includes bound periodicals

\*\* Cataloged titles

Source: Office of the Director, Grasselli Library

GRASSELLI LIBRARY  
ACQUISITIONS BY YEAR

Year	Books (cataloged items)	Items Withdrawn	Microforms	Audio Visual	E-Journals	E-Books	E-Other
1987-88	6,273	1,970	5,597	23	----	----	----
1988-89	5,911	1,142	4,142	408	----	----	----
1989-90	6,904	1,732	7,660	221	----	----	----
1990-91	8,252	*3,985	**6,983	211	----	----	----
1991-92	8,124	3,433	5,025	214	----	----	----
1992-93	8,171	974	6,394	229	----	----	----
1993-94	9,554	543	5,067	371	----	----	----
1994-95	10,010	2,337	6,230	445	----	----	----
1995-96	7,749	3,579	7,108	756	----	----	----
1996-97	9,254	668	7,663	625	----	----	----
1997-98	11,010	395	7,339	652	----	----	----
1998-99	10,257	271	6,527	818	----	----	----
1999-00	17,278	734	7,139	714	----	----	----
2000-01	10,209	645	18,398	567	----	----	----
2001-02	9,049	1,008	15,687	715	----	----	----
2002-03	23,244	1,461	5,906	664	----	----	----
2003-04	26,210	2,012	5,549	719	----	----	----
2004-05	19,832	1,153	4,579	397	----	----	----
2005-06	9,327	1,191	4,138	450	----	----	----
2006-07	10,786	4,030	4,965	394	21	0	37
2007-08	14,715	10,496	3,373	351	170	3,957	328
2008-09	10,718	7,812	3,707	631	901	8,607	265

\*Special weeding project, 1990-91

\*\*Includes Magazine Collection

Source: Office of the Director, Grasselli Library



GRASSELLI LIBRARY  
EXPENDITURES FOR LIBRARY MATERIALS

Year	Books (volumes)	Print Periodicals	Microforms	Audio Visual	Replacements	E-Journals	E-Books	E-Other	Computer based Sources
1987-88	177,222	177,079	5,398	5,786	1,200	----	----	----	----
1988-89	198,622	204,584	6,399	10,171	911	----	----	----	----
1989-90	173,391	211,824	17,173	13,696	790	----	----	----	----
1990-91	213,211	211,084	17,451	13,248	350	----	----	----	----
1991-92	275,124	225,628	20,538	13,379	815	----	----	----	----
1992-93	305,144	287,925	28,540	16,054	1,496	----	----	----	----
1993-94	345,663	218,069	51,434	32,957	3,159	----	----	----	52,820
1994-95	350,548	286,189	47,899	22,991	3,200	----	----	----	101,434
1995-96	402,936	266,592	57,949	33,332	3,200	----	----	----	106,792
1996-97	497,097	361,089	32,131	29,171	1,660	----	----	----	112,050
1997-98	446,950	382,335	19,189	29,229	890	----	----	----	133,731
1998-99	507,233	376,695	14,052	35,008	1,667	----	----	----	83,567
1999-00	428,738	411,531	47,945	24,195	4,543	----	----	----	107,073
2000-01	406,965	444,544	15,762	33,698	2,326	----	----	----	196,698
2001-02	476,816	374,832	15,595	22,521	2,501	----	----	----	271,845
2002-03	307,576	473,314	17,155	34,119	3,170	----	----	----	340,499
2003-04	396,219	388,882	19,006	32,198	4,113	----	----	----	321,205
2004-05	200,175	664,159	15,842	21,547	3,001	----	----	----	138,469
2005-06	304,175	263,707	16,789	17,115	5,844	----	----	----	460,141
2006-07	268,239	191,118	17,605	17,901	2,302	269,719	0	293,853	----
2007-08	271,096	421,957	18,418	831	4,685	254,401	12,675	25,609	----
2008-09	218,500	210,085	26,691	23,917	3,923	400,732	61,826	139,577	----

Source: Office of the Director, Grasselli Library

GRASSELLI LIBRARY  
CIRCULATION AND USAGE STATISTICS

Year	Books Circulated	Reserve Collection	Print Reserve Collection	Electronic Reserve Collection	Reference Questions Answered	Library Instruction Classes	Students in Library Instr. Classes
1987-88	42,336	8,823	----	----	----	----	----
1988-89	43,416	9,202	----	----	----	----	----
1989-90	41,806	10,612	----	----	----	----	----
1990-91	42,504	11,407	----	----	----	----	----
1991-92	43,446	12,477 (app)	----	----	----	----	----
1992-93	49,128	9,072	----	----	----	----	----
1993-94	52,312	6,747	----	----	----	----	----
1994-95	49,331	11,815	----	----	----	----	----
1995-96	63,215	11,560	----	----	----	----	----
1996-97	69,596	8,686	----	----	----	----	----
1997-98	63,923	11,000	----	----	23,880	131	2,490
1998-99	47,683	11,847	----	----	20,629	99	1,920
1999-00	49,112	11,957	----	----	19,209	81	2,275
2000-01	44,464	10,138	----	----	20,078	84	2,345
2001-02	38,817	13,578	----	----	15,679	74	2,177
2002-03	45,634	10,226	----	----	14,921	93	1,872
2003-04	63,901	15,028	----	----	15,891	84	1,677
2004-05	58,671	14,460	----	----	17,166	81	1,303
2005-06	59,065	12,166	----	----	17,350	102	1,565
2006-07	47,131	----	2,406	14,127	13,150	88	1,158
2007-08	41,429	----	2,596	5,876	11,882	78	859
2008-09	41,598	----	6,454	6,109	10,852	96	1,059

Source: Office of the Director, Grasselli Library

# JOHN CARROLL UNIVERSITY QUICK REFERENCE

Founded in 1886                      One of 28 Jesuit colleges and universities in the United States

President: Rev. Robert L. Niehoff, S.J.

Chairman of the Board of Directors: Mr. David W. Short '81

Basic Carnegie Classification (2005 Edition)      Masters L: Master's Colleges and Universities (larger programs)

Number of bachelor degree majors offered:                      40

Number of master degree programs offered:                      26

2008-09 DEGREES AWARDED:                      Bachelors                      703

(IPEDS Reported)                      Masters                      293

## ACADEMIC YEAR 2009-2010 TUITION

Undergraduate Full-time                      \$27,940

Undergraduate Part-time                      \$846 per credit hour

Graduate Arts and Sciences                      \$658 per credit hour

Graduate Business                      \$809 per credit hour

ACADEMIC YEAR 2009-2010 ROOM & BOARD                      \$8,330

## FALL 2009 HEADCOUNT ENROLLMENTS (IPEDS Reported)

Undergraduate total                      2,987

Graduate total                      727

Total University                      3,714

Full-time Undergrad                      2,904

Freshman Class                      661

University Students of Color                      438 (11.8%)

## FALL 2009 FTE (FULL-TIME EQUIVALENT) ENROLLMENT

Undergraduate                      3,092 (15 cr hr per FTE)

Graduate                      531 (9 cr hr per FTE)

Total                      3,623

## FALL 2009 FACULTY HEADCOUNT

Full-time                      210

Part-time                      175

Total                      385

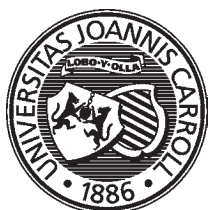
FALL 2009 STUDENT/FACULTY RATIO                      15:1

TOTAL LIVING ALUMNI                      38,546 (Fall 2009)

ENDOWMENT (Mkt Value 5/31/09)                      \$131,423,642

## MISSION STATEMENT

As a Jesuit Catholic university,  
John Carroll inspires individuals  
to excel in learning, leadership, and  
service in the region and in the world.



JOHN CARROLL UNIVERSITY  
20700 NORTH PARK BOULEVARD  
UNIVERSITY HEIGHTS, OHIO 44118  
[WWW.JCU.EDU](http://WWW.JCU.EDU)